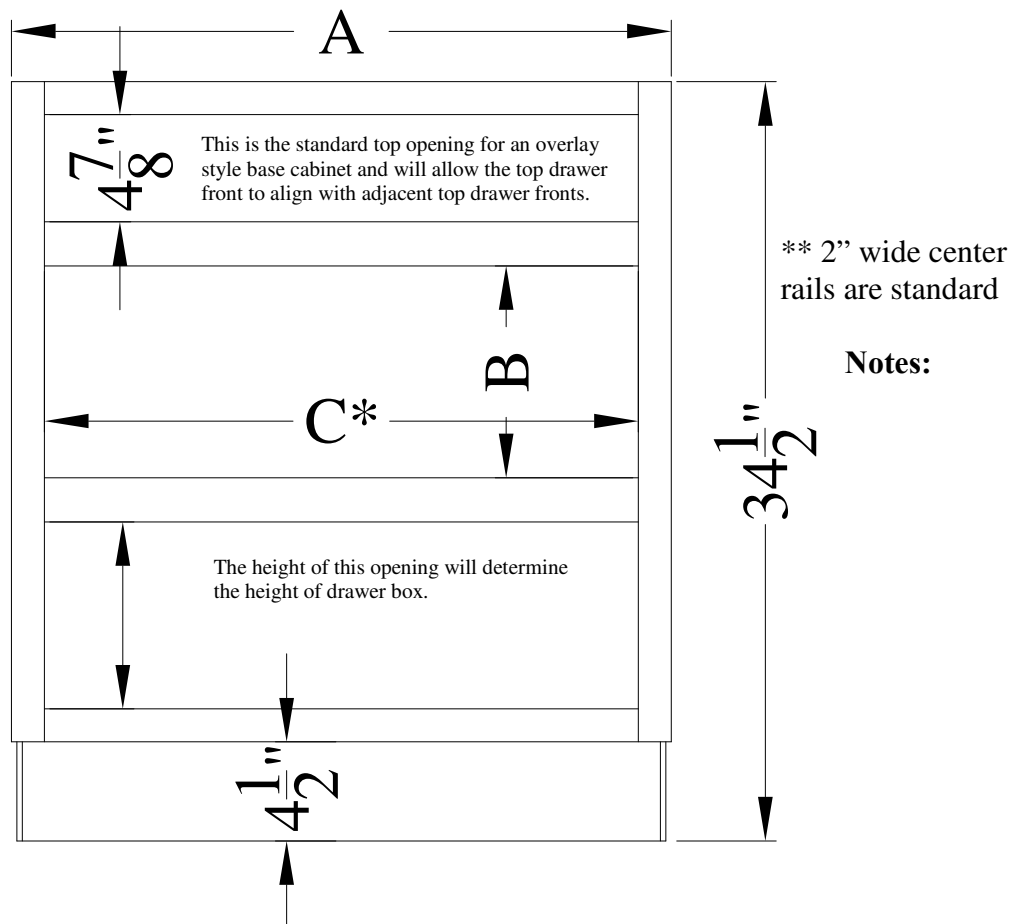




BWDC

Base Warming Drawer Cabinet



Provide the following dimensions:
A=_____Overall cabinet width
B=_____Oven cutout height
C*=_____Oven cutout width
*Cutout may be no wider than 1 1/2'' less the overall cabinet width, see chart

Cabinet width	Max cutout width
24"	22 1/2"
27"	25 1/2"
30"	28 1/2"
33"	31 1/2"
36"	34 1/2"

- 2'' rails above and below warming drawer cutout.
- Top frame opening will be 5 1/4'' high to align with standard Inset style base cabinets.
- Appliance cutout opening not beaded for beaded Inset style cabinet.

NOTE: Appliance openings in frames will not have a beaded perimeter when ordered on beaded inset cabinetry. Designer must specify in writing if the appliance opening is to have a bead.