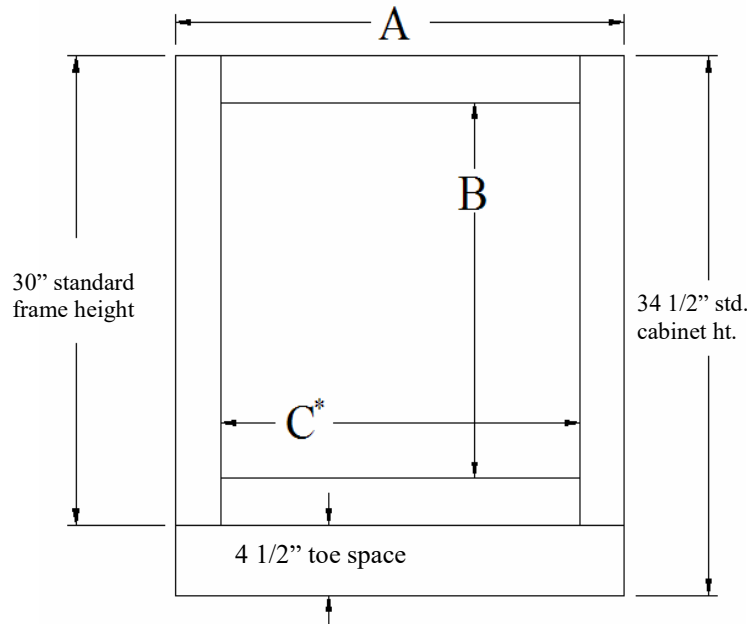




BOC

Base Oven Cabinet

Notes:



Provide the following dimensions:

A= _____ Overall cabinet width

B= _____ Oven cutout height

C*= _____ Oven cutout width

*Cutout may be no wider than 1 1/2" less the overall cabinet width, see chart

- Minimum top rail width of 3/4"
- Maximum standard overall oven cutout height of 27 3/4".
- Oven cutout is centered when 27" high or less unless otherwise specified.
- Minimum height oven cutout to start from floor is 5 1/4". MFC (frame change) charge applies if cutout starts less than 5 1/4" from floor.
- Appliance cutout opening not beaded for beaded Inset style cabinet.

*Max cutout widths

Cabinet width	Max cutout width
24"	22 1/2"
27"	25 1/2"
30"	28 1/2"
33"	31 1/2"
36"	34 1/2"

NOTE: Appliance openings in frames will not have a beaded perimeter when ordered on beaded inset cabinetry. Designer must specify in writing if the appliance opening is to have a bead.