



www.brightoncabinetry.com

CATALOG VERSION

BR1803

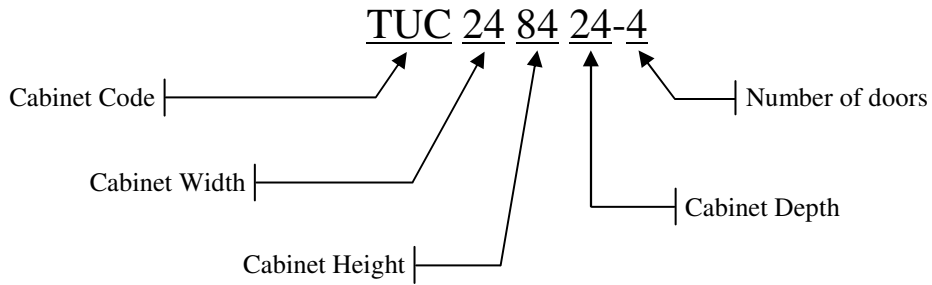
20/20 Version BR1803 (A/B)

SPECIFICATIONS

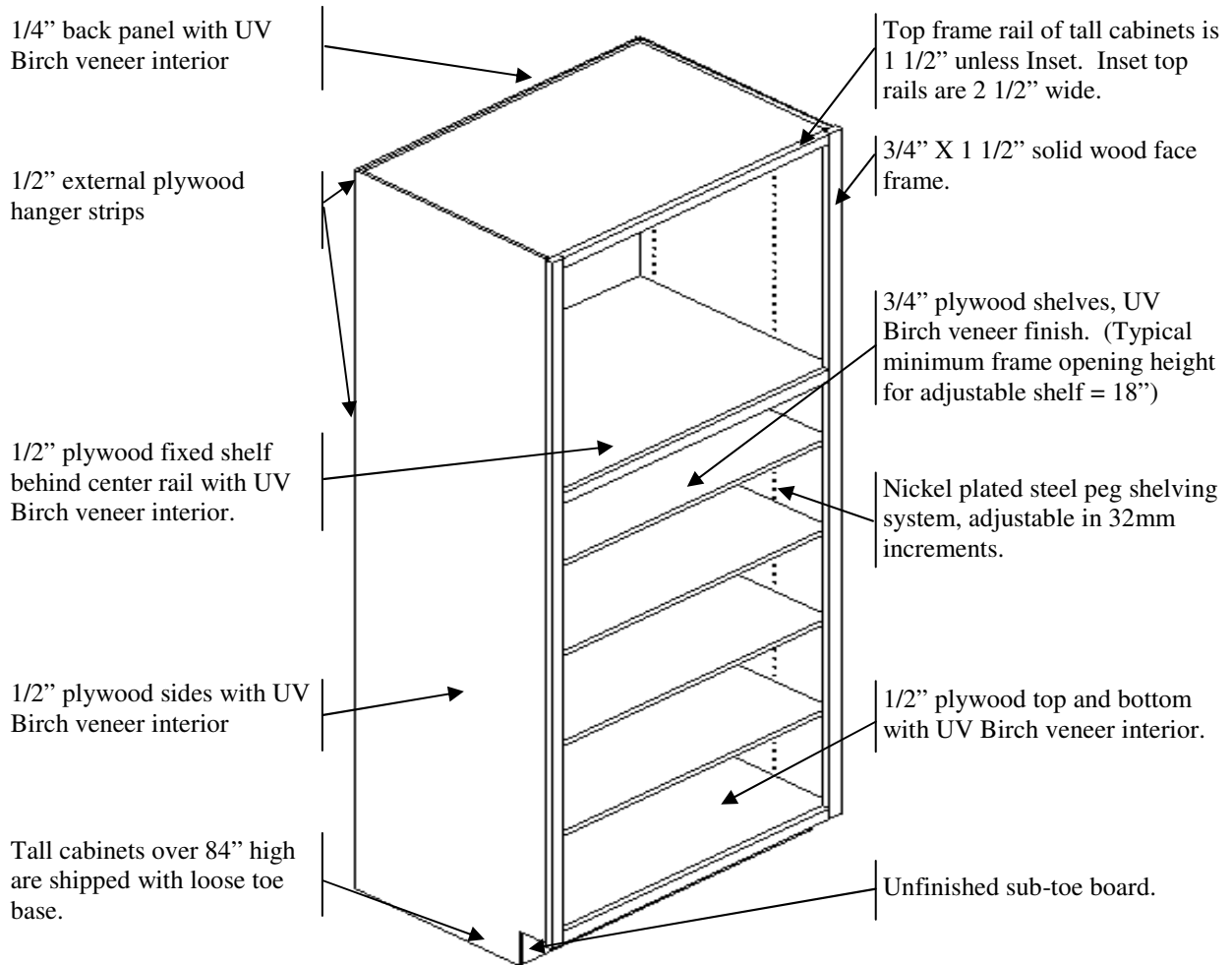
TALL CABINETS

(See “Cabinet Construction Specifications” and “Pricing Procedures” for options.)
 84”, 90”, 93”, 96” Tall are standard

Tall Cabinet Nomenclature



STANDARD TOE KICK HEIGHT: 4 1/2”; DEPTH: 3 1/2”
 STANDARD LOWER OPENING HEIGHT = 57”





Tall Contents

CABINETS

3 DRAWER UTILITY CABINET	13-14
ANGLED CABINETS	17
CANNED GOOD STORAGE CABINET	15
MULTI-FOOD STORAGE CABINET	16
OVEN CABINET SINGLE CUTOUT	
1 DRAWER AT BOTTOM/DOORS TOP.....	20-21
2 DRAWER AT BOTTOM/DOORS TOP.....	22-23
3 DRAWER AT BOTTOM/DOORS TOP.....	24-25
DOORS TOP AND BOTTOM.....	18-19
OVEN CABINET TWO CUTOUTS	
MICROWAVE/OVEN CABINET.....	26-27
OVEN/WARMING DRAWER CABINET.....	28-29
REFRIGERATOR SURROUND CABINET	8A
UTILITY CABINETS 13" DEEP	3-4
UTILITY VERTICAL STACK CABINETS 13"...	9-10
UTILITY CABINETS 24" DEEP	5-6
UTILITY VERTICAL STACK CABINETS 24"...	11-12
UTILITY CABINETS W/ ROLLOUT SHELVES	7-8
WINE RACK CABINET	16

ACCESSORIES

CLOSET RODS.....	35
END SKIN, LOOSE.....	35
FLIPPER DOOR GLIDES.....	35
REFRIGERATOR LEGS.....	34-34A
ROLLOUT SHELVES.....	37
TALL PARTITION.....	35
TALL SHELF ON DOOR.....	35
TOE KICK DRAWER.....	39
TRAY DIVIDER.....	35

FILLERS

OVERLAY FILLER STRIP.....	30
TALL FILLERS.....	30
TALL FILLER WITH RETURN.....	31-32B
TALL ANGLED FILLER WITH RETURN.....	33
TALL ANGLED FILLER.....	33

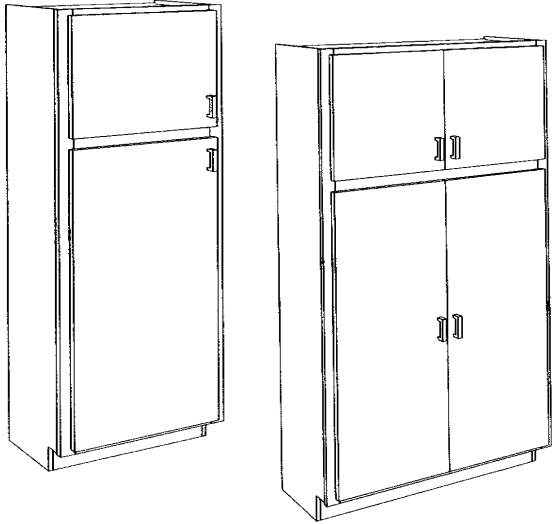
MODIFICATIONS

90 DEGREE HINGE.....	48
ADD CENTER RAIL.....	42
ADD CENTER STILE.....	42
ADDITIONAL DRAWER.....	48
ANGLED FRONT.....	46
ANGLED SIDE.....	46

MODIFICATIONS (CONTINUED)

ANGLED SIDE ENTRY.....	46
APPLIED MOLDING CHARGE.....	42
BACK TOE KICK.....	46
BEAD BOARD END.....	45
CLIPPED CORNER.....	47
COMBINED CABINET CHARGE.....	42
DOOR STAY.....	48
DOUBLE ENTRY.....	46
DRAWER HEAD UPGRADE.....	48
DUCT CUTOUT.....	47
END ENTRY.....	46
EXTEND BOTTOM RAIL UP.....	41
EXTEND SIDE BACK.....	41
EXTEND STILE.....	40-41
EXTEND TOP RAIL UP OR DOWN.....	41
FALSE DOOR ON END.....	45
FINISHED BACK.....	45
FINISHED END.....	45
FINISHED TOP.....	45
FLUSH FINISHED END.....	45
FLUSH FINISHED TOP.....	45
FLUSH TOE KICK.....	46
FLUTING.....	47
FRAME CHANGE.....	42
FRONT ONLY.....	42
FURNITURE END.....	44
GROOVED PANEL APPLIED.....	45
INCREASE CASE DIMENSION CHARGE.....	42
INTEGRATED TOE KICK.....	46
INWARD EXTENDED STILE.....	41
LOOSE TOE BASE.....	46
MATCHING WOOD INTERIOR.....	42
OMIT DOORS.....	42
OMIT OPERATING DRAWER BOX.....	48
OMIT TOE KICK.....	46
RECESSED SIDE.....	41
ROSETTE DESIGN.....	47
SCOOPED DRAWER SIDES.....	48
SIDE TOE KICK.....	46
UNIVERSAL ACCESS TOE KICK SPACE.....	47
SHAPE DRAWER BOX MODIFICATION.....	47
VALANCE BOTTOM RAIL.....	41
VALANCE TOP RAIL.....	41
WAINSCOT END PANEL.....	45

TALL UTILITY CABINET, 13" DEEP



84" TALL CABINETS

- Full depth shelves.
- One adjustable shelf in upper section.
- Four adjustable shelves in lower section

90" TALL CABINETS

- Full depth shelves.
- Two adjustable shelf in upper section.
- Four adjustable shelves in lower section.
- Toe base shipped loose

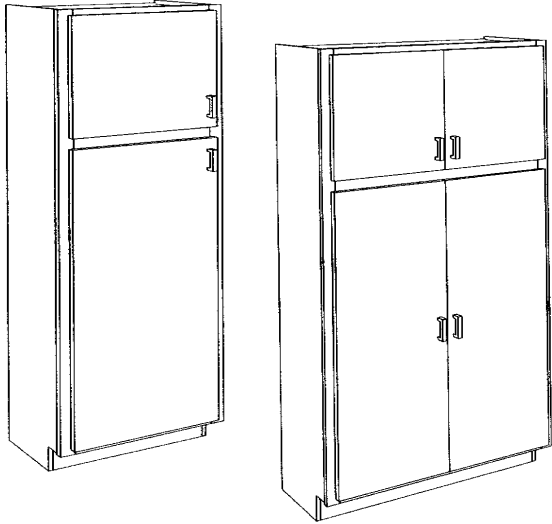
93" TALL CABINETS

- Full depth shelves
- Two adjustable shelves in upper section
- Four adjustable shelves in lower section
- Toe base shipped loose

	PRODUCT CODE	LEVEL 1	LEVEL 2
84" tall	TUC128413		
	TUC158413		
	TUC188413		
	TUC218413		
	TUC248413-2		
	TUC248413-4		
	TUC278413		
	TUC308413		
	TUC338413		
	TUC368413		
90" tall	TUC129013		
	TUC159013		
	TUC189013		
	TUC219013		
	TUC249013-2		
	TUC249013-4		
	TUC279013		
	TUC309013		
93" tall	TUC129313		
	TUC159313		
	TUC189313		
	TUC219313		
	TUC249313-2		
	TUC249313-4		
	TUC279313		
	TUC309313		
	TUC339313		
	TUC369313		

NOTE: When adding rollouts to lower section all adjustable shelves will be deleted in that section. Specify when wanting adjustable shelves and rollouts in same opening.

TALL UTILITY CABINET, 13" DEEP



96" TALL CABINETS

- Full depth shelves.
- Two adjustable shelves in upper section.
- Four adjustable shelves in lower section.
- Toe base shipped loose

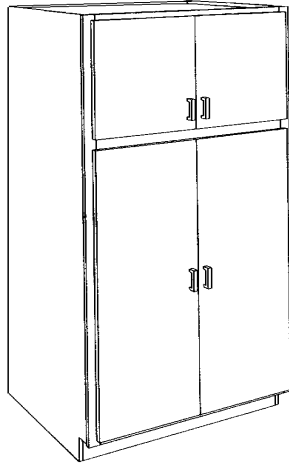
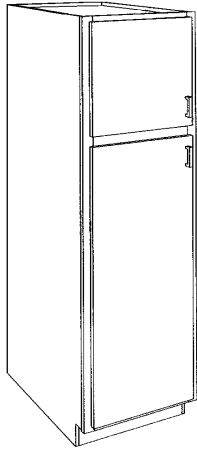
102" TALL CABINETS

- Full depth shelves.
- Three adjustable shelves in upper section.
- Four adjustable shelves in lower section.
- Toe base shipped loose

	PRODUCT CODE	LEVEL 1	LEVEL 2
96" tall	TUC129613		
	TUC159613		
	TUC189613		
	TUC219613		
	TUC249613-2		
	TUC249613-4		
	TUC279613		
	TUC309613		
	TUC339613		
	TUC369613		
102" tall	TUC1210213		
	TUC1510213		
	TUC1810213		
	TUC2110213		
	TUC2410213-2		
	TUC2410213-4		
	TUC2710213		
	TUC3010213		
	TUC3310213		
	TUC3610213		

NOTE: When adding rollouts to lower section all adjustable shelves will be deleted in that section. Specify when wanting adjustable shelves and rollouts in same opening.

TALL UTILITY CABINET, 24" DEEP



84" TALL CABINETS

- Full depth shelves.
- One adjustable shelf in upper section.
- Four adjustable shelves in lower section

90" TALL CABINETS

- Full depth shelves.
- Two adjustable shelf in upper section.
- Four adjustable shelves in lower section.
- Toe base shipped loose

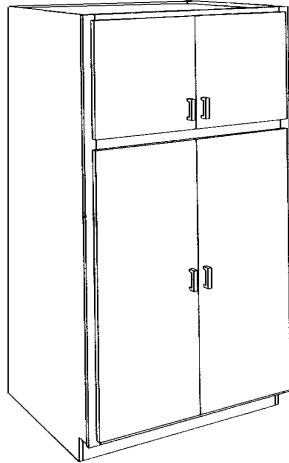
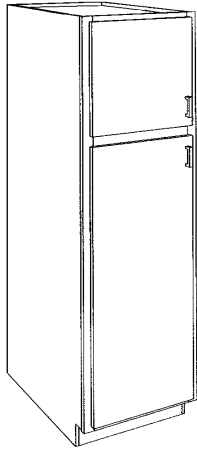
93" TALL CABINETS

- Full depth shelves
- Two adjustable shelves in upper section
- Four adjustable shelves in lower section
- Toe base shipped loose

	PRODUCT CODE	LEVEL 1	LEVEL 2
84" tall	TUC128424		
	TUC158424		
	TUC188424		
	TUC218424		
	TUC248424-2		
	TUC248424-4		
	TUC278424		
	TUC308424		
	TUC338424		
	TUC368424		
90" tall	TUC129024		
	TUC159024		
	TUC189024		
	TUC219024		
	TUC249024-2		
	TUC249024-4		
	TUC279024		
	TUC309024		
	TUC339024		
	TUC369024		
93" tall	TUC129324		
	TUC159324		
	TUC189324		
	TUC219324		
	TUC249324-2		
	TUC249324-4		
	TUC279324		
	TUC309324		
	TUC339324		
	TUC369324		

NOTE: When adding rollouts to lower section all adjustable shelves will be deleted in that section. Specify when wanting adjustable shelves and rollouts in same section.

TALL UTILITY CABINET, 24" DEEP



96" TALL CABINETS

- Full depth shelves.
- Two adjustable shelves in upper section.
- Four adjustable shelves in lower section.
- Toe base shipped loose

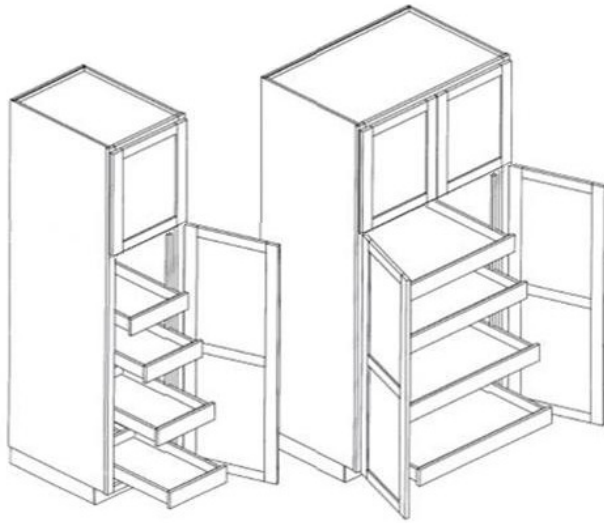
102" TALL CABINETS

- Full depth shelves.
- Three adjustable shelves in upper section.
- Four adjustable shelves in lower section.
- Toe base shipped loose

	PRODUCT CODE	LEVEL 1	LEVEL 2
96" tall	TUC129624		
	TUC159624		
	TUC189624		
	TUC219624		
	TUC249624-2		
	TUC249624-4		
	TUC279624		
	TUC309624		
	TUC339624		
	TUC369624		
102" tall	TUC1210224		
	TUC1510224		
	TUC1810224		
	TUC2110224		
	TUC2410224-2		
	TUC2410224-4		
	TUC2710224		
	TUC3010224		
	TUC3310224		
	TUC3610224		

NOTE: When adding rollouts to lower section all adjustable shelves will be deleted in that section. Specify when wanting adjustable shelves and rollouts in same section.

TALL UTILITY CABINET WITH ROLLOUT SHELVES



- 24" deep standard
- Four adjustable, full width, 4" high rollouts.
- Specify left (L) or right (R) for hinge side on two door cabinets.

84" TALL CABINETS

- One full depth, adjustable shelf in upper section.

90" TALL CABINETS

- Two full depth, adjustable shelf in upper section.
- Toe base shipped loose

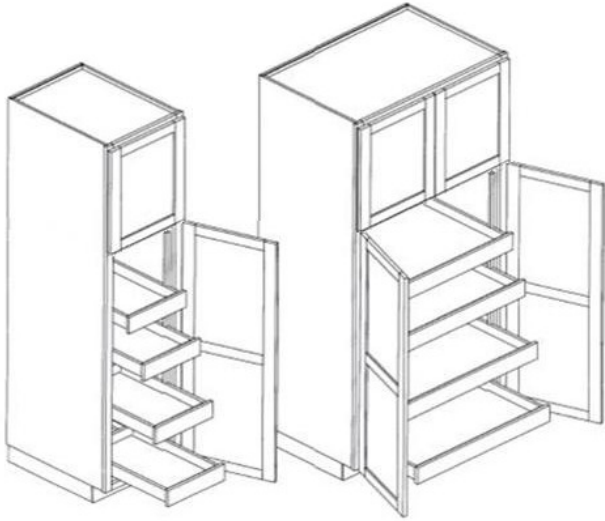
93" TALL CABINETS

- Two full depth, adjustable shelves in upper section.
- Toe base shipped loose

NOTE: See Rollout Shelves listed in Tall accessory section for more specific rollout details.

	PRODUCT CODE	LEVEL 1	LEVEL 2
84" tall	TUC128424+RO4		
	TUC158424+RO4		
	TUC188424+RO4		
	TUC218424+RO4		
	TUC248424-2+RO4		
4 doors	TUC248424-4+RO4		
	TUC278424+RO4		
	TUC308424+RO4		
	TUC338424+RO4		
	TUC368424+RO4		
90" tall	TUC129024+RO4		
	TUC159024+RO4		
	TUC189024+RO4		
	TUC219024+RO4		
	TUC249024-2+RO4		
4 doors	TUC249024-4+RO4		
	TUC279024+RO4		
	TUC309024+RO4		
	TUC339024+RO4		
	TUC369024+RO4		
93" tall	TUC129324+RO4		
	TUC159324+RO4		
	TUC189324+RO4		
	TUC219324+RO4		
	TUC249324-2+RO4		
4 doors	TUC249324-4+RO4		
	TUC279324+RO4		
	TUC309324+RO4		
	TUC339324+RO4		
	TUC369324+RO4		

TALL UTILITY CABINET WITH ROLLOUT SHELVES



- 24" deep standard
- Four adjustable, full width, 4" high rollouts.
- Specify left (L) or right (R) for hinge side for two door cabinets.

96" TALL CABINETS

- Two full depth, adjustable shelves in upper section.
- Toe base shipped loose

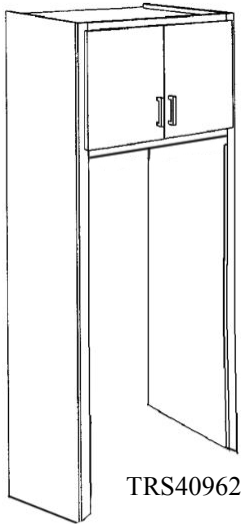
102" TALL CABINETS

- Three full depth, adjustable shelves in upper section.
- Toe base shipped loose

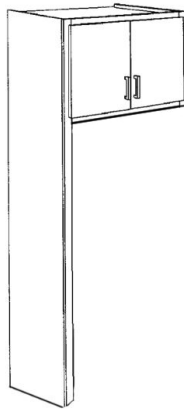
NOTE: See Rollout Shelves listed in Tall accessory section for more specific rollout details.

	PRODUCT CODE	LEVEL 1	LEVEL 2
96" tall	TUC129624+RO4		
	TUC159624+RO4		
	TUC189624+RO4		
	TUC219624+RO4		
	TUC249624-2+RO4		
4 doors	TUC249624-4+RO4		
	TUC279624+RO4		
	TUC309624+RO4		
	TUC339624+RO4		
	TUC369624+RO4		
102" tall	TUC1210224+RO4		
	TUC1510224+RO4		
	TUC1810224+RO4		
	TUC2110224+RO4		
	TUC2410224-2+RO4		
4 doors	TUC2410224-4+RO4		
	TUC2710224+RO4		
	TUC3010224+RO4		
	TUC3310224+RO4		
	TUC3610224+RO4		

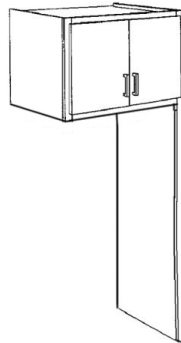
TALL REFRIGERATOR SURROUND CABINET



TRS409624B (Both Legs)



TRS409624L (Left Leg)



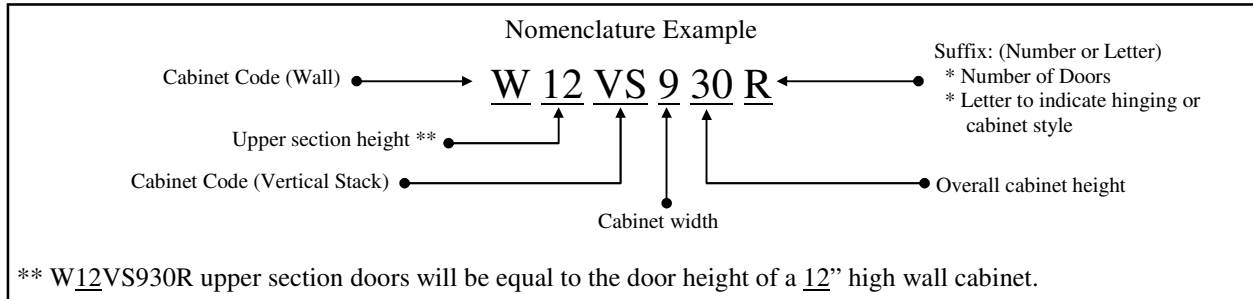
TRS409624R (Right Leg)

	PRODUCT CODE	LEVEL 1	LEVEL 2
24" deep	TRS408424		
	TRS409024		
	TRS409324		
	TRS409624		
	TRS4010224		
	TRS4010824		
30" deep	TRS408430		
	TRS409030		
	TRS409330		
	TRS409630		
	TRS4010230		
	TRS4010830		

Note: When beaded Inset— Both leg version will be beaded around the lower appliance opening. Single Leg version will not have a bead around the lower opening unless specifically requested on the order by the designer.

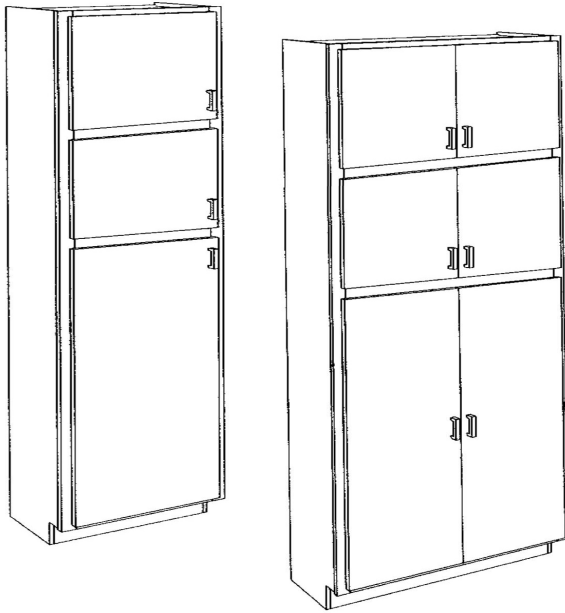
- 40" wide, standard
- Available at 24" and 30" deep.
- Lower opening is 37" wide, sized for 36" wide refrigerator unit.
- Standard with Furniture Flush Ends, Matching Wood Interior and Finished Wall Bottom.
- Lower opening is 73" high. Add MFC (frame change) with a note on the order for a taller lower opening.
- 1 1/2" full length framing on face of return.
- Specify B (both legs), L (left leg) or R (right leg).
- Cabinets that are 84" high, or any with an upper frame opening of less than 9" high, cannot have doors that are hinged left and right. Instead, these cabinets will have their doors hinged to the top, opening upwards.
- One 3/4 depth adjustable shelf in upper of 96" H cabinet.
- Two 3/4 depth adjustable shelves in upper of 102" H and 108" H cabinet.
- Shipped with bracing that must be removed before installation.
- Verify ceiling height clearances for installation.
- Products over 96" tall may require a splice due to material limitations.

VERTICAL STACK CABINET SPECIFICATIONS



- Cabinets that have the look of two cabinets that have been stacked one on top of the other.
- Wall cabinets have two frame openings, one top and one bottom, with a center frame rail and fixed center floor dividing the two sections.
- Tall cabinets have three frame openings, one top, one middle, and one bottom, with a center frame rail and fixed center floor dividing each section.
- Offered standard with top doors equal to 12", 15", 18" or 21" high cabinets. Upper door heights will align with cabinet height equal to first set of numbers listed in the nomenclature. See example above.
- "Single door" indicates one door across width for each opening. "Two doors" indicates 2 butt-doors for each opening.
- Specify L or R for hinge side when applicable.
- Shelf quantities are dependent on the specific opening height of each section. A minimum of 18" frame height opening is required for an adjustable shelf.
- Matching wood interior modification (MMWI) will change the entire cabinet interior to have a finished interior.
- For vertical stacked wall cabinets: Any height change will modify the cabinet in the lower section. The upper frame opening height will not change unless specified on the order and will require a frame change charge (MFC).
- For vertical stacked tall cabinets: Any height change will modify the cabinet in the middle section. The top and bottom frame opening heights will not change unless specified on the order and will require a frame change charge (MFC).
- FOL-C overlay cabinet has a 3" face frame mid-rail below the top section. All other overlays have a 1 1/2" face frame mid-rail.
- Cabinets 39" wide or greater will have a fixed center stile in each section as standard.

TALL UTILITY, VERTICAL STACK CABINET, 13" DEEP

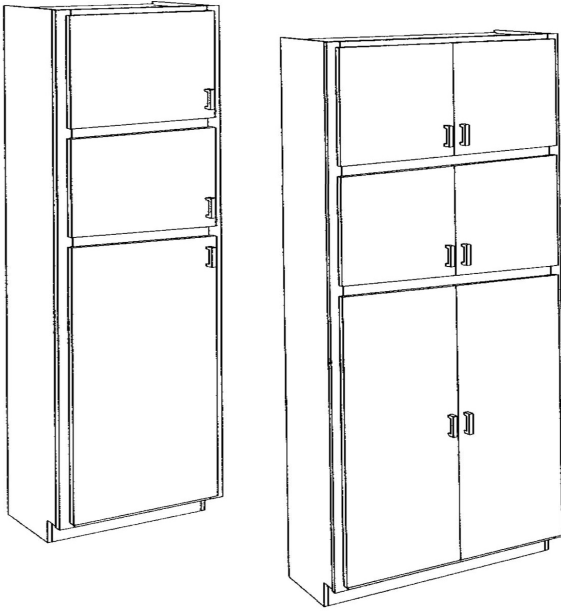


- See Vertical Stack Cabinet Specifications on page W12 for more information.
- Toe base shipped loose
- Full depth shelves
- Four adjustable shelves in lower section.
- T21VS cabinets have one adjustable shelf in the top section.
- Shelf quantity in the center section can vary depending on overall cabinet height and height of top section.
- Minimum frame opening must be 18" high for adjustable shelf.

	PRODUCT CODE	LEVEL 1	LEVEL 2
102" tall	T_VS1210213		
	T_VS1510213		
	T_VS1810213		
	T_VS2110213		
	T_VS2410213-2		
	T_VS2410213-4		
	T_VS2710213		
	T_VS3010213		
	T_VS3310213		
	T_VS3610213		
105" tall	T_VS1210513		
	T_VS1510513		
	T_VS1810513		
	T_VS2110513		
	T_VS2410513-2		
	T_VS2410513-4		
	T_VS2710513		
	T_VS3010513		
	T_VS3310513		
	T_VS3610513		
108" tall	T_VS1210813		
	T_VS1510813		
	T_VS1810813		
	T_VS2110813		
	T_VS2410813-2		
	T_VS2410813-4		
	T_VS2710813		
	T_VS3010813		
	T_VS3310813		
	T_VS3610813		

NOTE: When adding rollouts to a cabinet section all adjustable shelves will be deleted in that section. Specify when wanting adjustable shelves and rollouts in same opening.

TALL UTILITY CABINET, VERTICAL STACK 13" DEEP



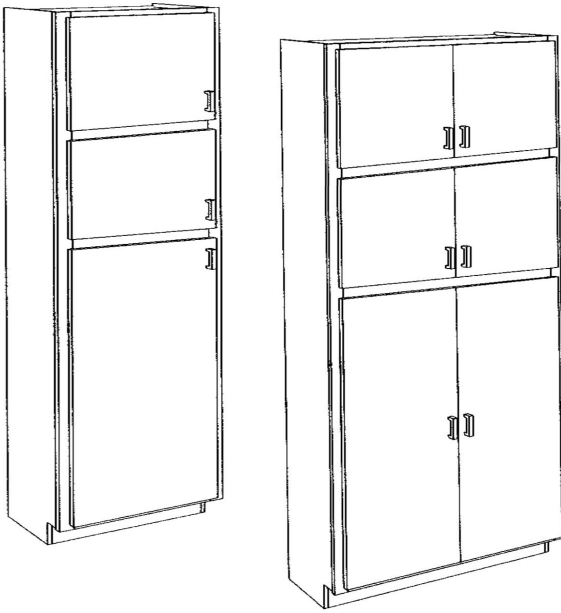
- See Vertical Stack Cabinet Specifications on page W12 for more information.
- Toe base shipped loose
- Full depth shelves
- Four adjustable shelves in lower section.
- T21VS cabinets have one adjustable shelf in the top section.
- Shelf quantity in the center section can vary depending on overall cabinet height and height of top section.
- Minimum frame opening must be 18" high for adjustable shelf.

PRODUCT LEVEL 1 LEVEL 2
CODE

111" tall	T_VS1211113		
	T_VS1511113		
	T_VS1811113		
	T_VS2111113		
	T_VS2411113-2		
	T_VS2411113-4		
	T_VS2711113		
	T_VS3011113		
	T_VS3311113		
	T_VS3611113		
114" tall	T_VS1211413		
	T_VS1511413		
	T_VS1811413		
	T_VS2111413		
	T_VS2411413-2		
	T_VS2411413-4		
	T_VS2711413		
	T_VS3011413		
	T_VS3311413		
	T_VS3611413		
117" tall	T_VS1211713		
	T_VS1511713		
	T_VS1811713		
	T_VS2111713		
	T_VS2411713-2		
	T_VS2411713-4		
	T_VS2711713		
	T_VS3011713		
	T_VS3311713		
	T_VS3611713		

NOTE: When adding rollouts to lower section all adjustable shelves will be deleted in that section. Specify when wanting adjustable shelves and rollouts in same opening.

TALL UTILITY CABINET, VERTICAL STACK 24" DEEP

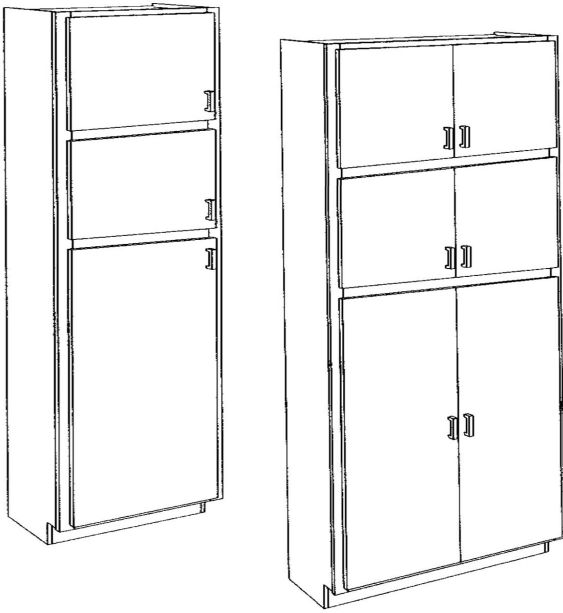


- See Vertical Stack Cabinet Specifications on page W12 for more information.
- Toe base shipped loose
- Full depth shelves
- Four adjustable shelves in lower section.
- T21VS cabinets have one adjustable shelf in the top section.
- Shelf quantity in the center section can vary depending on overall cabinet height and height of top section.
- Minimum frame opening must be 18" high for adjustable shelf.

NOTE: When adding rollouts to lower section all adjustable shelves will be deleted in that section. Specify when wanting adjustable shelves and rollouts in same opening.

	PRODUCT CODE	LEVEL 1	LEVEL 2
102" tall	T_VS1210224		
	T_VS1510224		
	T_VS1810224		
	T_VS2110224		
	T_VS2410224-2		
	T_VS2410224-4		
	T_VS2710224		
	T_VS3010224		
	T_VS3310224		
	T_VS3610224		
105" tall	T_VS1210524		
	T_VS1510524		
	T_VS1810524		
	T_VS2110524		
	T_VS2410524-2		
	T_VS2410524-4		
	T_VS2710524		
	T_VS3010524		
	T_VS3310524		
	T_VS3610524		
108" tall	T_VS1210824		
	T_VS1510824		
	T_VS1810824		
	T_VS2110824		
	T_VS2410824-2		
	T_VS2410824-4		
	T_VS2710824		
	T_VS3010824		
	T_VS3310824		
	T_VS3610824		

TALL UTILITY CABINET, VERTICAL STACK 24" DEEP

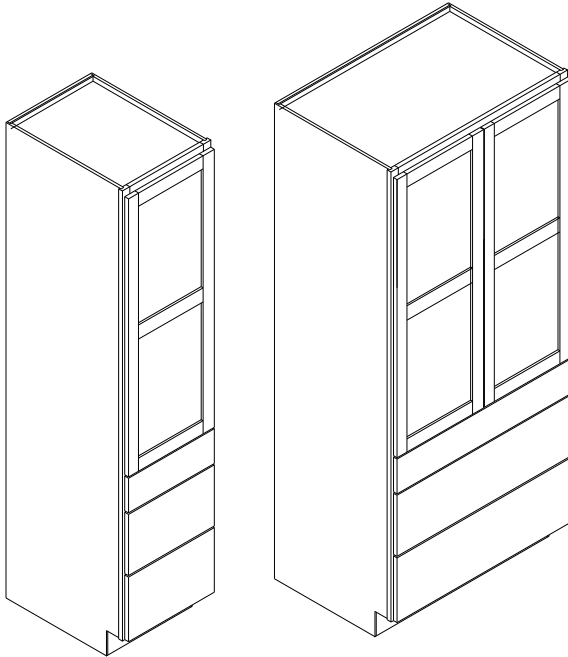


- See Vertical Stack Cabinet Specifications on page W12 for more information.
- Toe base shipped loose
- Full depth shelves
- Four adjustable shelves in lower section.
- T21VS cabinets have one adjustable shelf in the top section.
- Shelf quantity in the center section can vary depending on overall cabinet height and height of top section.
- Minimum frame opening must be 18" high for adjustable shelf.

	PRODUCT CODE	LEVEL 1	LEVEL 2
111" tall	T_VS1211124		
	T_VS1511124		
	T_VS1811124		
	T_VS2111124		
	T_VS2411124-2		
	T_VS2411124-4		
	T_VS2711124		
	T_VS3011124		
	T_VS3311124		
	T_VS3611124		
114" tall	T_VS1211424		
	T_VS1511424		
	T_VS1811424		
	T_VS2111424		
	T_VS2411424-2		
	T_VS2411424-4		
	T_VS2711424		
	T_VS3011424		
	T_VS3311424		
	T_VS3611424		
117" tall	T_VS1211724		
	T_VS1511724		
	T_VS1811724		
	T_VS2111724		
	T_VS2411724-2		
	T_VS2411724-4		
	T_VS2711724		
	T_VS3011724		
	T_VS3311724		
	T_VS3611724		

NOTE: When adding rollouts to lower section all adjustable shelves will be deleted in that section. Specify when wanting adjustable shelves and rollouts in same opening.

TALL 3 DRAWER UTILITY CABINET



- 24" deep standard
- One fixed shelf and center rail between lower drawers and upper door(s).
- Drawers align with standard 34 1/2" high base configuration.
- 4" high standard top drawer box, two 8" high lower drawer boxes
- Specify left (L) or right (R) for hinge side for single door cabinets.

84" TALL CABINETS

- Three full depth, adjustable shelves in upper section.

90" TALL CABINETS

- Four full depth, adjustable shelves in upper section.
- Toe base shipped loose

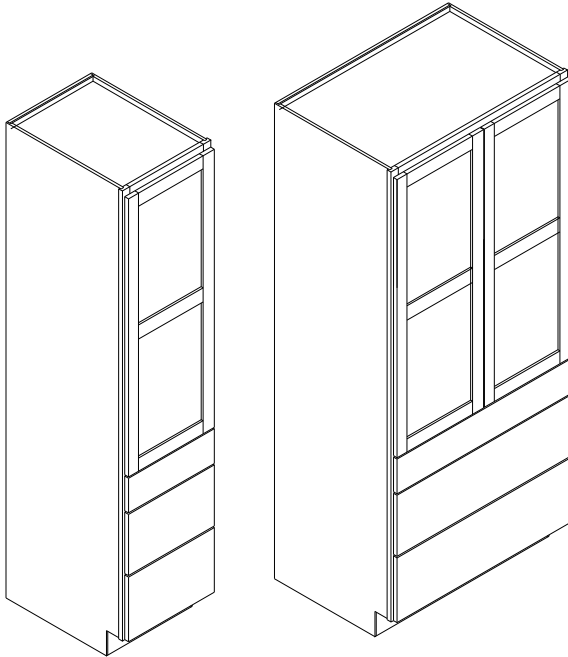
93" TALL CABINETS

- Four full depth, adjustable shelves in upper section.
- Toe base shipped loose

NOTE: When adding rollouts to upper section all adjustable shelves will be deleted in that section. Specify when wanting adjustable shelves and rollouts in same section.

	PRODUCT CODE	LEVEL 1	LEVEL 2
84" tall	T3DUC128424		
	T3DUC158424		
	T3DUC188424		
	T3DUC218424		
	T3DUC248424		
2 doors	T3DUC248424-2		
	T3DUC278424		
	T3DUC308424		
	T3DUC338424		
	T3DUC368424		
90" tall	T3DUC129024		
	T3DUC159024		
	T3DUC189024		
	T3DUC219024		
	T3DUC249024		
2 doors	T3DUC249024-2		
	T3DUC279024		
	T3DUC309024		
	T3DUC339024		
	T3DUC369024		
93" tall	T3DUC129324		
	T3DUC159324		
	T3DUC189324		
	T3DUC219324		
	T3DUC249324		
2 doors	T3DUC249324-2		
	T3DUC279324		
	T3DUC309324		
	T3DUC339324		
	T3DUC369324		

TALL 3 DRAWER UTILITY CABINET



- 24" deep standard
- One fixed shelf and center rail between lower drawers and upper door(s).
- Drawers align with standard 34 1/2" high base configuration.
- 4" high standard top drawer box, two 8" high lower drawer boxes
- Specify left (L) or right (R) for hinge side for single door cabinets.

96" TALL CABINETS

- Five full depth, adjustable shelves in upper section.
- Toe base shipped loose

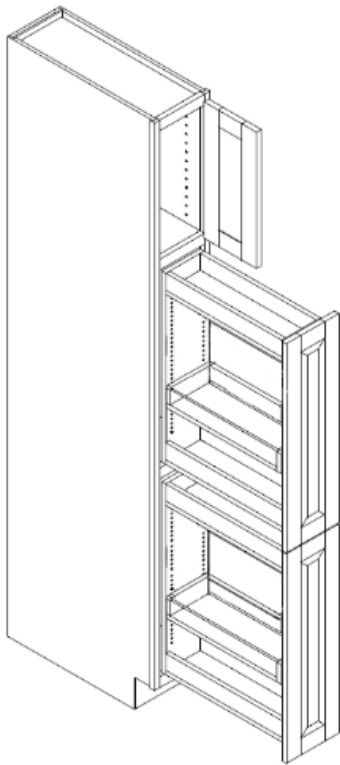
102" TALL CABINETS

- Five full depth, adjustable shelves in upper section.
- Toe base shipped loose

NOTE: When adding rollouts to upper section all adjustable shelves will be deleted in that section. Specify when wanting adjustable shelves and rollouts in same section.

	PRODUCT CODE	LEVEL 1	LEVEL 2
96" tall	T3DUC129624		
	T3DUC159624		
	T3DUC189624		
	T3DUC219624		
	T3DUC249624		
2 doors	T3DUC249624-2		
	T3DUC279624		
	T3DUC309624		
	T3DUC339624		
	T3DUC369624		
102" tall	T3DUC1210224		
	T3DUC1510224		
	T3DUC1810224		
	T3DUC2110224		
	T3DUC2410224		
2 doors	T3DUC2410224-2		
	T3DUC2710224		
	T3DUC3010224		
	T3DUC3310224		
	T3DUC3610224		

TALL CANNED GOOD STORAGE



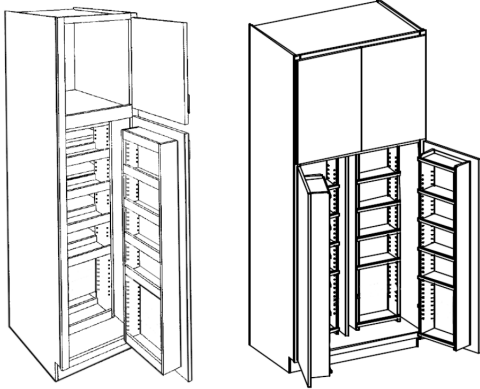
example of pullout unit

	PRODUCT CODE	LEVEL 1	LEVEL 2
One adjustable shelf in upper section	TCGS98424		
	TCGS128424		
	TCGS158424		
	TCGS188424		
	TCGS218424		
Two adjustable shelves in upper section	TCGS99024		
	TCGS129024		
	TCGS159024		
	TCGS189024		
	TCGS219024		
Two adjustable shelves in upper section	TCGS99324		
	TCGS129324		
	TCGS159324		
	TCGS189324		
	TCGS219324		
Two adjustable shelves in upper section	TCGS99624		
	TCGS129624		
	TCGS159624		
	TCGS189624		
	TCGS219624		
Three adjustable shelves in upper section	TCGS910224		
	TCGS1210224		
	TCGS1510224		
	TCGS1810224		
	TCGS2110224		

- 24” deep standard
- Two separate pullout canned good storage racks
- One adjustable canned good shelf per pullout
- Top opening does not have pullout but instead will have full depth adjustable shelves based on overall cabinet height.
- 90”, 93”, 96” and 102” tall cabinets will ship with loose toe base.
- Specify hinge side for top door.

NOTE: Tall Canned Good Storage Units under 8” wide are not recommended to store cans. The shelf would only be wide enough for spices or other smaller items.

TALL CABINETS



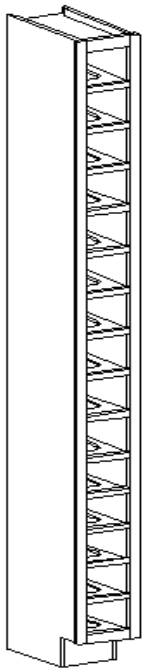
TALL MULTI-FOOD STORAGE

- 24” deep standard
- Wood shelf units
- Lower section has four adjustable shelves on each swing out and door mounted storage rack. Four shallow adjustable shelves at back.
- 36” wide cabinet has center partition in lower section.
- 84” tall cabinet: one shelf in upper section.
- 90”, 93”, & 96” tall cabinet: two shelves in upper section.
- 102” tall cabinet: three shelves in upper section.
- Toe base shipped loose for cabinets over 84” tall.
- Door(s) must be able to open a minimum of 105° to allow access to the storage space in the rear.

PRODUCT CODE	LEVEL 1	LEVEL 2
--------------	---------	---------

Two door	TMFS188424	
	TMFS189024	
	TMFS189324	
	TMFS189624	
	TMFS1810224	

Four door	TMFS368424	
	TMFS369024	
	TMFS369324	
	TMFS369624	
	TMFS3610224	

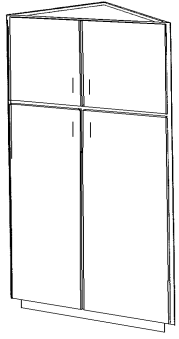


TALL WINE CUBBY VERTICAL

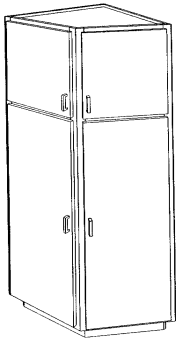
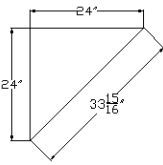
- 13” deep standard
- 1/2” plywood, framed construction
- Floors scooped so bottles do not roll
- Interior finished in matching job specie /stain.
- Toe base shipped loose for cabinets over 84” tall.

TWCV684	n/a
TWCV690	n/a
TWCV693	n/a
TWCV696	n/a
TWCV6102	n/a

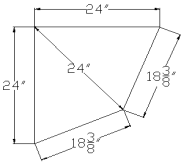
TALL ANGLED CABINETS



TAC-1



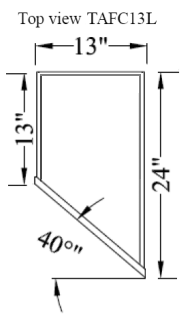
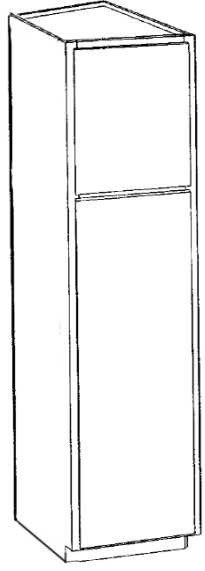
TAC-2



PRODUCT CODE	LEVEL 1	LEVEL 2
TAC-1 248424		
TAC-1 249024		
TAC-1 249324		
TAC-1 249624		
TAC-1 2410224		
TAC-2 248424		
TAC-2 249024		
TAC-2 249324		
TAC-2 249624		
TAC-2 2410224		

1 FRONT AND 2 FRONT ANGLED CABINETS

- 24" wide and 24" deep standard
- Four adjustable shelves in lower section.
- 84" tall cabinets: one shelf in upper section
- 90", 93", & 96" tall cabinets: two shelves in upper section
- 102" tall cabinets: three shelves in upper section.
- Toe base shipped loose for cabinets over 84" tall.



T AFC1384
T AFC1390
T AFC1393
T AFC1396
T AFC13102

TALL ANGLED FRONT CABINET

- 13" wide with 40 degree angled front frame
- Short side = 13" deep, long side = 24" deep
- Specify left (L) or right (R) to indicate end of cabinet run for deeper cabinet side.
- Hinging will be to the shallower side (left (L) illustrated). If opposite hinging is required please specify on order.
- Four adjustable shelves in lower section.
- 84" tall cabinets: one shelf in upper section
- 90", 93", & 96" tall cabinets: two shelves in upper section
- 102" tall cabinets: three shelves in upper section.
- Toe base shipped loose for cabinets over 84" tall.
- For a 45 degree angle on the front, the width of the cabinet will need to be 11" wide with 13" depth for the shallow side. Or, the depth of the shallow side will need to be 11" keeping the width at 13".

TOC

Tall Oven Cabinet

****Standard 3" wide rails above and below cutout, specify if another dimension is required**

NOTE: Appliance openings in frames will not have a beaded perimeter when ordered on beaded inset cabinetry. Designer must specify in writing if the appliance opening is to have a bead.

**For figuring reveals for install kits, drawer fronts overlay the oven rail by the following standard amounts:

Hinge	Overlay
FOL-C	1 1/4"
SOL-C/SOL-K	1/2"
SOL-K LIPPED	5/16" ***
Specify if another dimension is desired ***	

***SOL-K Lipped overlays cannot be modified

Provide the following dimensions:

A= _____ Overall cabinet width

B= _____ Overall cabinet height

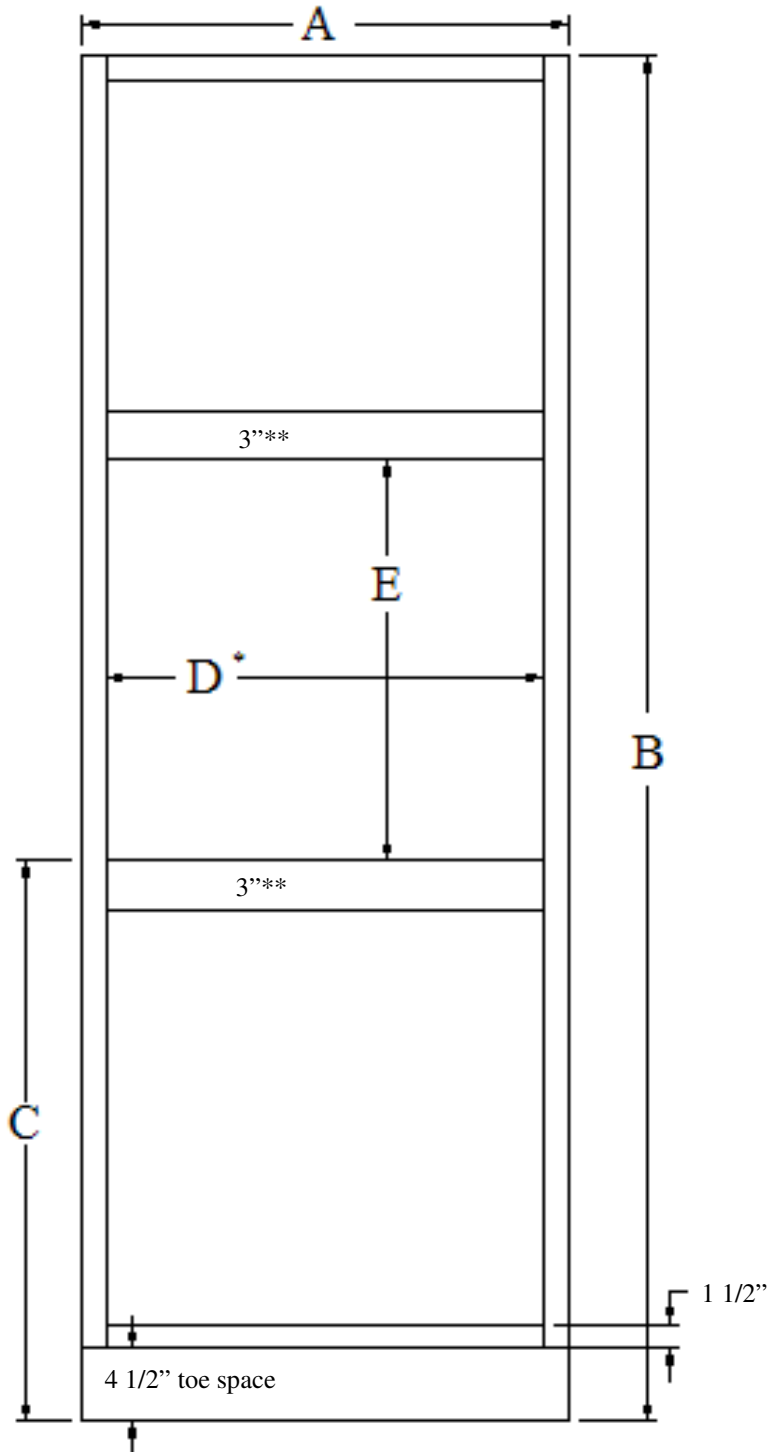
C= _____ Ht. cutout to start from floor (recommended ht. of 36" to align with std. base height cabinets)

D*= _____ Oven cutout width

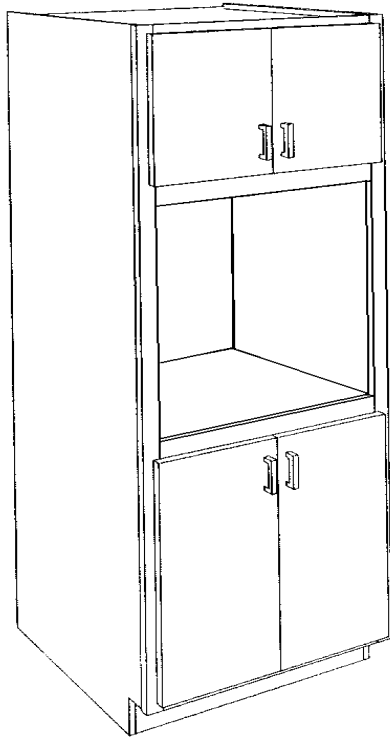
E= _____ Oven cutout height

*Cutout may be no wider than 1 1/2" less the overall cabinet width, see chart

Cabinet width	Max cutout width*
24"	22 1/2"
27"	25 1/2"
30"	28 1/2"
33"	31 1/2"
36"	34 1/2"



TALL OVEN CABINET, 4 DOORS



- 24” deep standard
- Specify the cutout size (width X height) and distance from floor to bottom of cutout. Use of template page for TOC is recommended.
- To allow for doors equal to standard base height, cutout must start at 36” off of floor.
- The cutout width can be no more than 1 1/2” less than the overall cabinet width, this leaves a minimum of 3/4” for each frame stile (left and right). Example: 30” wide cabinets, the largest cutout width allowable is 28 1/2”.
- 3” rail above and below cutout standard.
- Number of shelves in the upper section of Tall Oven Cabinets will vary according to the opening size. This opening is determined by the oven cutout and height off the floor specifications.
- Cutout back at oven opening.
- Toe base shipped loose for cabinets over 84” tall.
- See template page for more details.
- Appliance openings in frames will not have a beaded perimeter when ordered on beaded inset cabinetry. Designer must specify in writing if the appliance opening is to have a bead.

	PRODUCT CODE	LEVEL 1	LEVEL 2
84” tall	TOC248424		
	TOC278424		
	TOC308424		
	TOC338424		
	TOC368424		
90” tall	TOC249024		
	TOC279024		
	TOC309024		
	TOC339024		
	TOC369024		
93” tall	TOC249324		
	TOC279324		
	TOC309324		
	TOC339324		
	TOC369324		
96” tall	TOC249624		
	TOC279624		
	TOC309624		
	TOC339624		
	TOC369624		
102” tall	TOC2410224		
	TOC2710224		
	TOC3010224		
	TOC3310224		
	TOC3610224		

NOTE: TOC cabinet cannot have decorative ends except for a standard finish end or standard flush finish when using maximum width cutout for the specific cabinet’s overall width.

T1DOC

Tall One Drawer Oven Cabinet

****Standard 3" wide rails above and below cutout, specify if another dimension is required**

NOTE: Appliance openings in frames will not have a beaded perimeter when ordered on beaded inset cabinetry. Designer must specify in writing if the appliance opening is to have a bead.

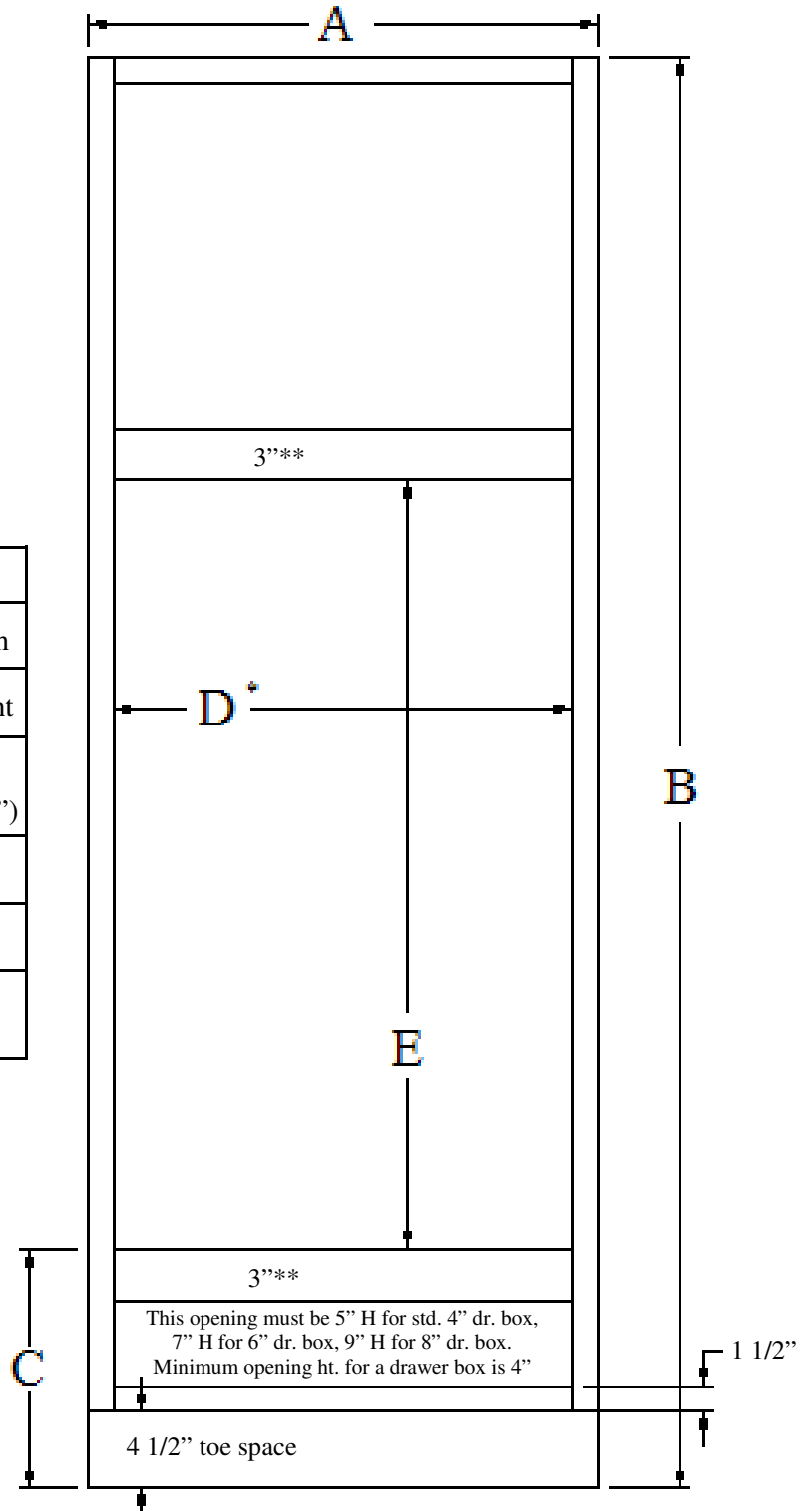
**For figuring reveals for install kits, drawer fronts overlay the oven rail by the following standard amounts:

Hinge	Overlay
FOL-C	1 1/4"
SOL-C/SOL-K	1/2"
SOL-K LIPPED	5/16" ***
Specify if another dimension is desired ***	

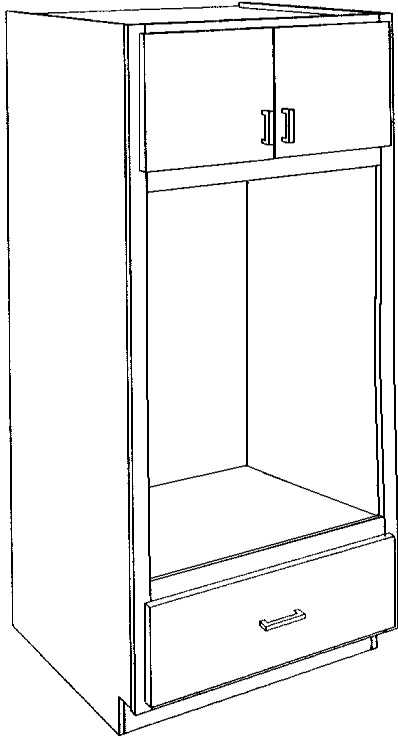
***SOL-K Lipped overlays cannot be modified

Provide the following dimensions:
A= _____ Overall cabinet width
B= _____ Overall cabinet height
C= _____ Ht. cutout to start from floor (recommended min. height = 14")
D*= _____ Oven cutout width
E= _____ Oven cutout height
*Cutout may be no wider than 1 1/2" less the overall cabinet width, see chart

Cabinet width	Max cutout width*
24"	22 1/2"
27"	25 1/2"
30"	28 1/2"
33"	31 1/2"
36"	34 1/2"



TALL OVEN CABINET 1 DRAWER, 2 DOORS



- 24" deep standard
- Specify the cutout size (width X height) and distance from floor to bottom of cutout. Use of template page for T1DOC is recommended.
- To allow for a standard size drawer box at the bottom, the cutout must start at least 14" off of floor.
- The cutout width can be no more than 1 1/2" less than the overall cabinet width, this leaves a minimum of 3/4" for each frame stile (left and right). Example: 30" wide cabinets, the largest cutout width allowable is 28 1/2".
- 3" rail above and below cutout.
- Number of shelves in the upper section of Tall Oven Cabinets will vary according to the opening size. This opening is determined by the oven cutout and height off the floor specifications.
- Cutout back at oven opening.
- Toe base shipped loose for cabinets over 84" tall.
- See template page for more details.
- Appliance openings in frames will not have a beaded perimeter when ordered on beaded inset cabinetry. Designer must specify in writing if the appliance opening is to have a bead.

	PRODUCT CODE	LEVEL 1	LEVEL 2
84" tall	T1DOC248424		
	T1DOC278424		
	T1DOC308424		
	T1DOC338424		
	T1DOC368424		
90" tall	T1DOC249024		
	T1DOC279024		
	T1DOC309024		
	T1DOC339024		
	T1DOC369024		
93" tall	T1DOC249324		
	T1DOC279324		
	T1DOC309324		
	T1DOC339324		
	T1DOC369324		
96" tall	T1DOC249624		
	T1DOC279624		
	T1DOC309624		
	T1DOC339624		
	T1DOC369624		
102" tall	T1DOC2410224		
	T1DOC2710224		
	T1DOC3010224		
	T1DOC3310224		
	T1DOC3610224		

NOTE: T1DOC cabinet cannot have decorative ends except for a standard finish end or standard flush finish when using maximum width cutout for the specific cabinet's overall width.

T2DOC

Tall Two Drawer Oven Cabinet

****Standard 3" wide rails above and below cutout, specify if another dimension is required**

NOTE: Appliance openings in frames will not have a beaded perimeter when ordered on beaded inset cabinetry. Designer must specify in writing if the appliance opening is to have a bead.

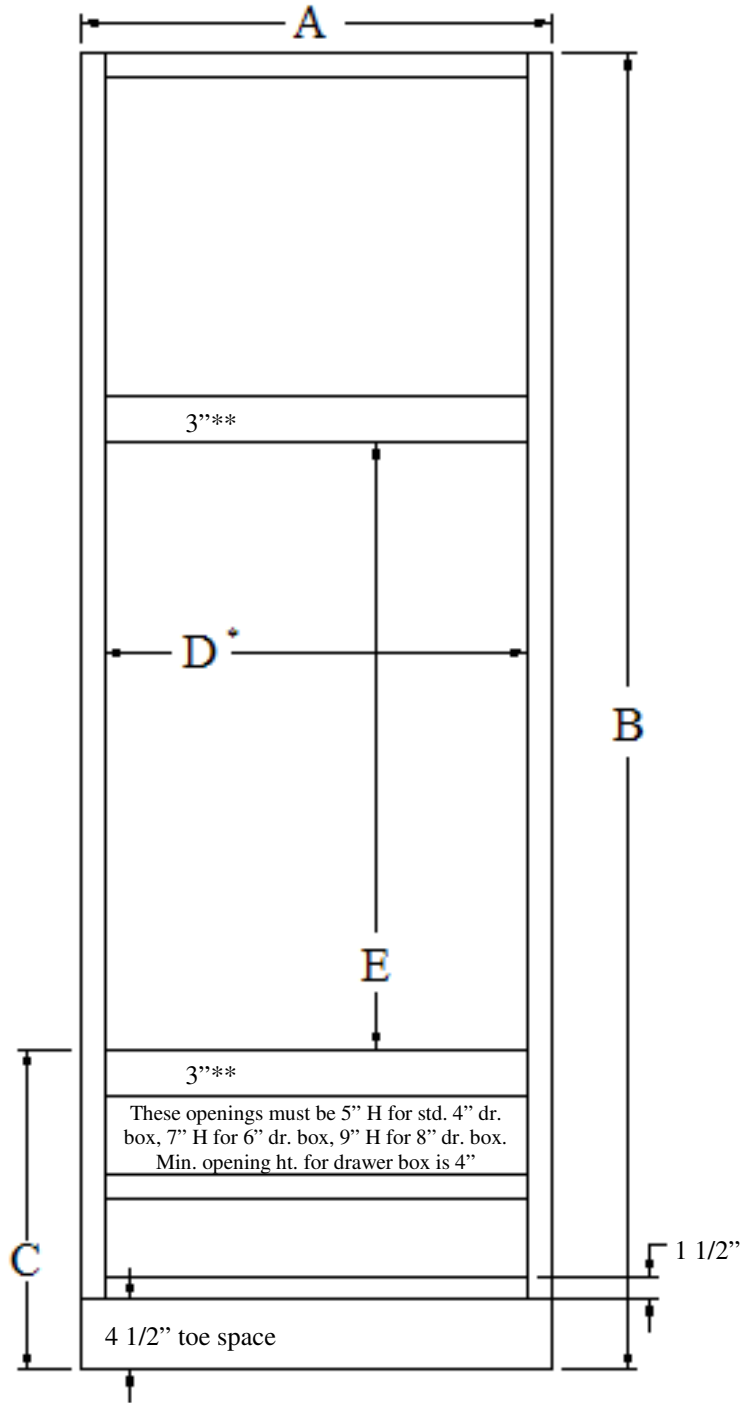
**For figuring reveals for install kits, drawer fronts overlay the oven rail by the following standard amounts:

Hinge	Overlay
FOL-C	1 1/4"
SOL-C/SOL-K	1/2"
SOL-K LIPPED	5/16" ***
Specify if another dimension is desired ***	

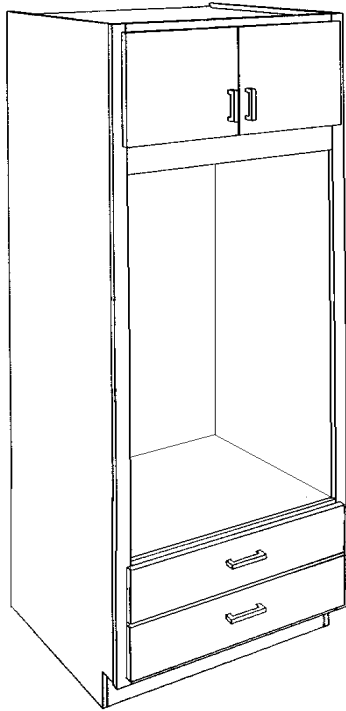
***SOL-K Lipped overlays cannot be modified

Provide the following dimensions:
A=_____Overall cabinet width
B=_____Overall cabinet height
C=_____Ht. cutout to start from floor (recommended ht. of 20 1/2" to allow for two std. 4" drawer boxes)
D*=_____Oven cutout width
E=_____Oven cutout height
*Cutout may be no wider than 1 1/2" less the overall cabinet width, see chart

Cabinet width	Max cutout width*
24"	22 1/2"
27"	25 1/2"
30"	28 1/2"
33"	31 1/2"
36"	34 1/2"



TALL OVEN CABINET 2 DRAWERS, 2 DOORS



- 24" deep standard
- Specify the cutout size (width X height) and distance from floor to bottom of cutout. Use of template page for T2DOC is recommended.
- To allow for two standard size drawer boxes, the cutout must start at least 20 1/2" off of floor.
- The cutout width can be no more than 1 1/2" less than the overall cabinet width, this leaves a minimum of 3/4" for each frame stile (left and right). Example: 30" wide cabinets, the largest cutout width allowable is 28 1/2".
- 3" rail above and below cutout.
- Number of shelves in the upper section of Tall Oven Cabinets will vary according to the opening size. This opening is determined by the oven cutout and height off the floor specifications.
- Drawers will be equal height unless otherwise specified.
- Cutout back at oven opening.
- Toe base shipped loose for cabinets over 84" tall.
- See template page for more details.
- Appliance openings in frames will not have a beaded perimeter when ordered on beaded inset cabinetry. Designer must specify in writing if the appliance opening is to have a bead.

	PRODUCT CODE	LEVEL 1	LEVEL 2
84" tall	T2DOC248424		
	T2DOC278424		
	T2DOC308424		
	T2DOC338424		
	T2DOC368424		
90" tall	T2DOC249024		
	T2DOC279024		
	T2DOC309024		
	T2DOC339024		
	T2DOC369024		
93" tall	T2DOC249324		
	T2DOC279324		
	T2DOC309324		
	T2DOC339324		
	T2DOC369324		
96" tall	T2DOC249624		
	T2DOC279624		
	T2DOC309624		
	T2DOC339624		
	T2DOC369624		
102" tall	T2DOC2410224		
	T2DOC2710224		
	T2DOC3010224		
	T2DOC3310224		
	T2DOC3610224		

NOTE: T2DOC cabinet cannot have decorative ends except for a standard finish end or standard flush finish when using maximum width cutout for the specific cabinet's overall width.

T3DOC

Tall Three Drawer Oven Cabinet

****Standard 3" wide rails above and below cutout, specify if another dimension is required**

NOTE: Appliance openings in frames will not have a beaded perimeter when ordered on beaded inset cabinetry. Designer must specify in writing if the appliance opening is to have a bead.

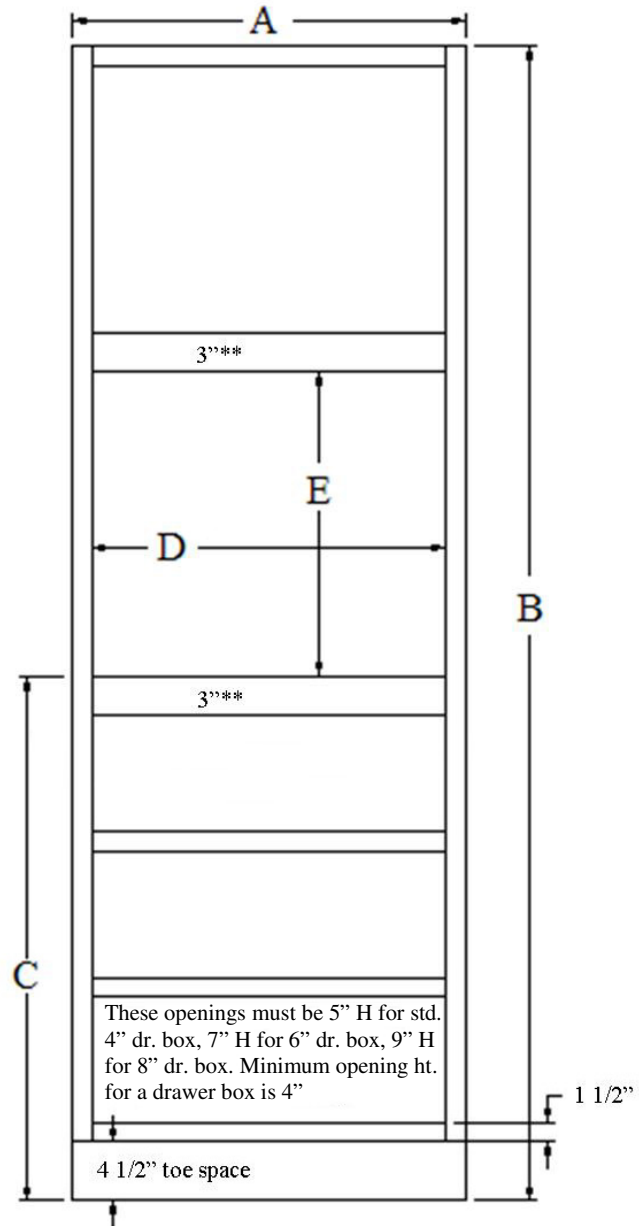
**For figuring reveals for install kits, drawer fronts overlay the oven rail by the following standard amounts:

Hinge	Overlay
FOL-C	1 1/4"
SOL-C/SOL-K	1/2"
SOL-K LIPPED	5/16" ***
Specify if another dimension is desired ***	

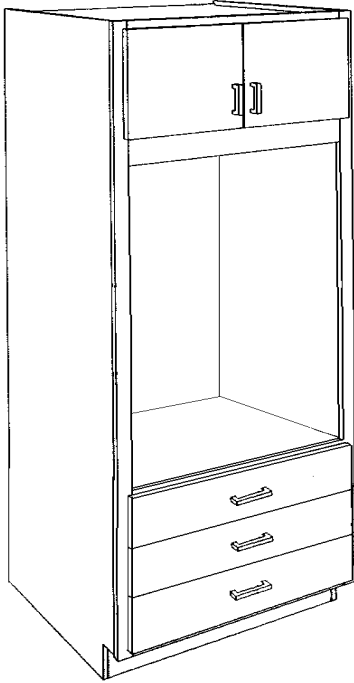
***SOL-K Lipped overlays cannot be modified

Provide the following dimensions:
A=_____ Overall cabinet width
B=_____ Overall cabinet height
C=_____ Ht. cutout to start from floor (recommended ht. of 36" to align with std. base height cabinets)
D*=_____ Oven cutout width
E=_____ Oven cutout height
*Cutout may be no wider than 1 1/2" less the overall cabinet width, see chart

Cabinet width	Max cutout width*
24"	22 1/2"
27"	25 1/2"
30"	28 1/2"
33"	31 1/2"
36"	34 1/2"



TALL OVEN CABINET 3 DRAWERS, 2 DOORS



- 24" deep standard
- Specify the cutout size (width X height) and distance from floor to bottom of cutout. Use of template page for T3DOC is recommended.
- To allow for drawers equal to standard height three drawer base, the cutout must start at 36" off of floor.
- The cutout width can be no more than 1 1/2" less than the overall cabinet width, this leaves a minimum of 3/4" for each frame stile (left and right). Example: 30" wide cabinets, the largest cutout width allowable is 28 1/2".
- 3" rail above and below cutout.
- Number of shelves in the upper section of Tall Oven Cabinets will vary according to the opening size. This opening is determined by the oven cutout and height off the floor specifications.
- Drawers will be equal height unless otherwise specified.
- Cutout back at oven opening.
- Toe base shipped loose for cabinets over 84" tall.
- See template page for more details.
- Appliance openings in frames will not have a beaded perimeter when ordered on beaded inset cabinetry. Designer must specify in writing if the appliance opening is to have a bead.

	PRODUCT CODE	LEVEL 1	LEVEL 2
84" tall	T3DOC248424		
	T3DOC278424		
	T3DOC308424		
	T3DOC338424		
	T3DOC368424		
90" tall	T3DOC249024		
	T3DOC279024		
	T3DOC309024		
	T3DOC339024		
	T3DOC369024		
93" tall	T3DOC249324		
	T3DOC279324		
	T3DOC309324		
	T3DOC339324		
	T3DOC369324		
96" tall	T3DOC249624		
	T3DOC279624		
	T3DOC309624		
	T3DOC339624		
	T3DOC369624		
102" tall	T3DOC2410224		
	T3DOC2710224		
	T3DOC3010224		
	T3DOC3310224		
	T3DOC3610224		

NOTE: T3DOC cabinet cannot have decorative ends except for a standard finish end or standard flush finish when using maximum width cutout for the specific cabinet's overall width.

TMOC

Tall Microwave Oven Cabinet

****Standard 3" wide rails above and below cutout, specify if another dimension is required**

NOTE: Appliance openings in frames will not have a beaded perimeter when ordered on beaded inset cabinetry. Designer must specify in writing if the appliance opening is to have a bead.

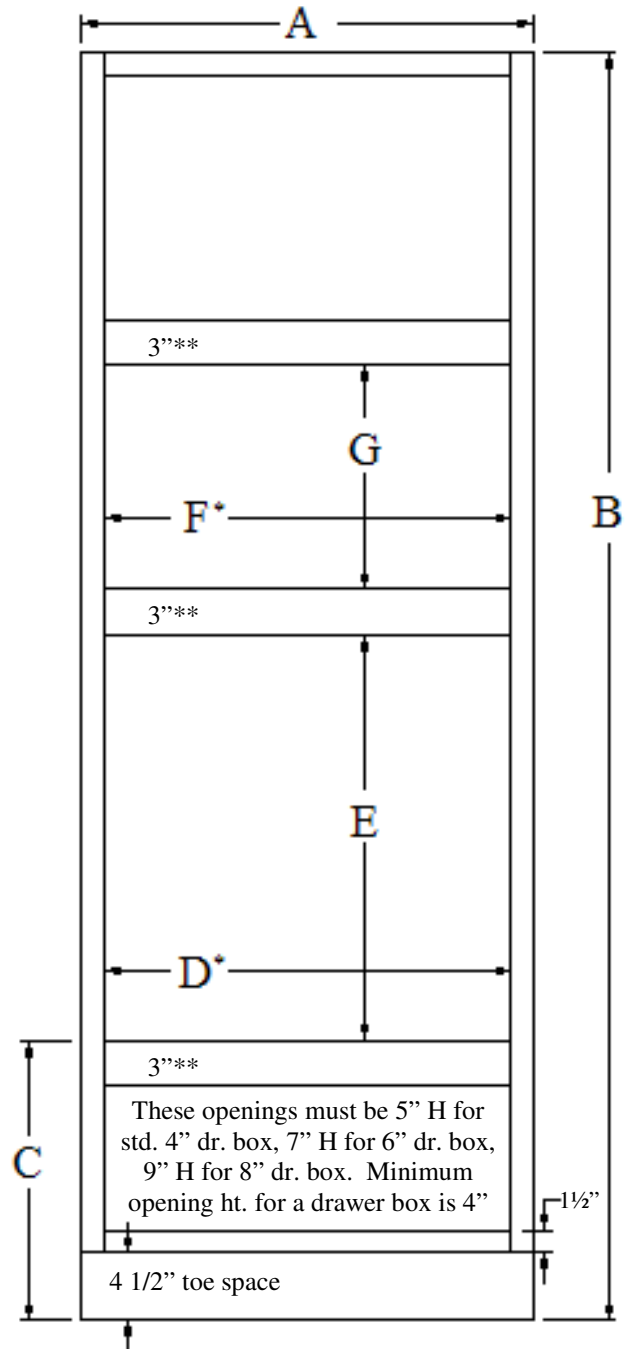
**For figuring reveals for install kits, drawer fronts overlay the oven rail by the following standard amounts:

Hinge	Overlay
FOL-C	1 1/4"
SOL-C/SOL-K	1/2"
SOL-K LIPPED	5/16" ***
Specify if another dimension is desired ***	

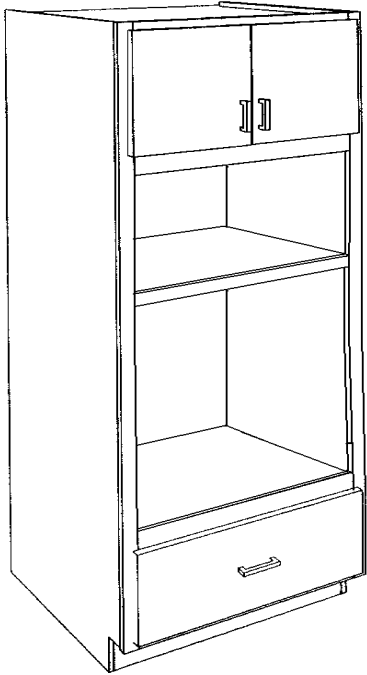
***SOL-K Lipped overlays cannot be modified

Provide the following dimensions:
A= _____ Overall cabinet width
B= _____ Overall cabinet height
C= _____ Ht. cutout to start from floor (recommended min. height = 14")
D* = _____ Oven cutout width
E= _____ Oven cutout height
F* = _____ Microwave cutout width
G= _____ Microwave cutout height
*Cutout may be no wider than 1 1/2" less the overall cabinet width, see chart

Cabinet width	Max cutout width*
24"	22 1/2"
27"	25 1/2"
30"	28 1/2"
33"	31 1/2"
36"	34 1/2"



TALL MICROWAVE OVEN CABINET 1 DRAWER, 2 DOORS



- 24" deep standard
- Two appliance cutouts
- Specify both cutout sizes (width X height) and distance from floor to bottom of lower cutout. Use of template page for TMOC is recommended.
- To allow for a standard size drawer box at the bottom, the cutout must start at least 14" off of floor. A 3" rail will separate the cutouts unless otherwise specified.
- The cutout width can be no more than 1 1/2" less than the overall cabinet width, this leaves a minimum of 3/4" for each frame stile (left and right). Example: 30" wide cabinets, the largest cutout width allowable is 28 1/2".
- 3" rail above and below cutout.
- Number of shelves in the upper section of Tall Oven Cabinets will vary according to the opening size. This opening is determined by the oven cutout and height off the floor specifications.
- Drawers will be equal height unless otherwise specified.
- Cutout back at oven opening only.
- Toe base shipped loose for cabinets over 84" tall.
- See template page for more details.
- Appliance openings in frames will not have a beaded perimeter when ordered on beaded inset cabinetry. Designer must specify in writing if the appliance opening is to have a bead.

	PRODUCT CODE	LEVEL 1	LEVEL 2
84" tall	TMOC248424		
	TMOC278424		
	TMOC308424		
	TMOC338424		
	TMOC368424		
90" tall	TMOC249024		
	TMOC279024		
	TMOC309024		
	TMOC339024		
	TMOC369024		
93" tall	TMOC249324		
	TMOC279324		
	TMOC309324		
	TMOC339324		
	TMOC369324		
96" tall	TMOC249624		
	TMOC279624		
	TMOC309624		
	TMOC339624		
	TMOC369624		
102" tall	TMOC2410224		
	TMOC2710224		
	TMOC3010224		
	TMOC3310224		
	TMOC3610224		

NOTE: TMOC cabinet cannot have decorative ends except for a standard finish end or standard flush finish when using maximum width cutout for the specific cabinet's overall width.

TWDOC

Tall Warming Drawer Oven Cabinet

****Standard 3" wide rails above and below cutout, specify if another dimension is required**

NOTE: Appliance openings in frames will not have a beaded perimeter when ordered on beaded inset cabinetry. Designer must specify in writing if the appliance opening is to have a bead.

**For figuring reveals for install kits, drawer fronts overlay the oven rail by the following standard amounts:

Hinge	Overlay
FOL-C	1 1/4"
SOL-C/SOL-K	1/2"
SOL-K LIPPED	5/16" ***
Specify if another dimension is desired ***	

***SOL-K Lipped overlays cannot be modified

Provide the following dimensions:

A= _____ Overall cabinet width

B= _____ Overall cabinet height

C= _____ Height oven cutout to start from floor (see below for calculation of 'C')

D*= _____ Oven cutout width

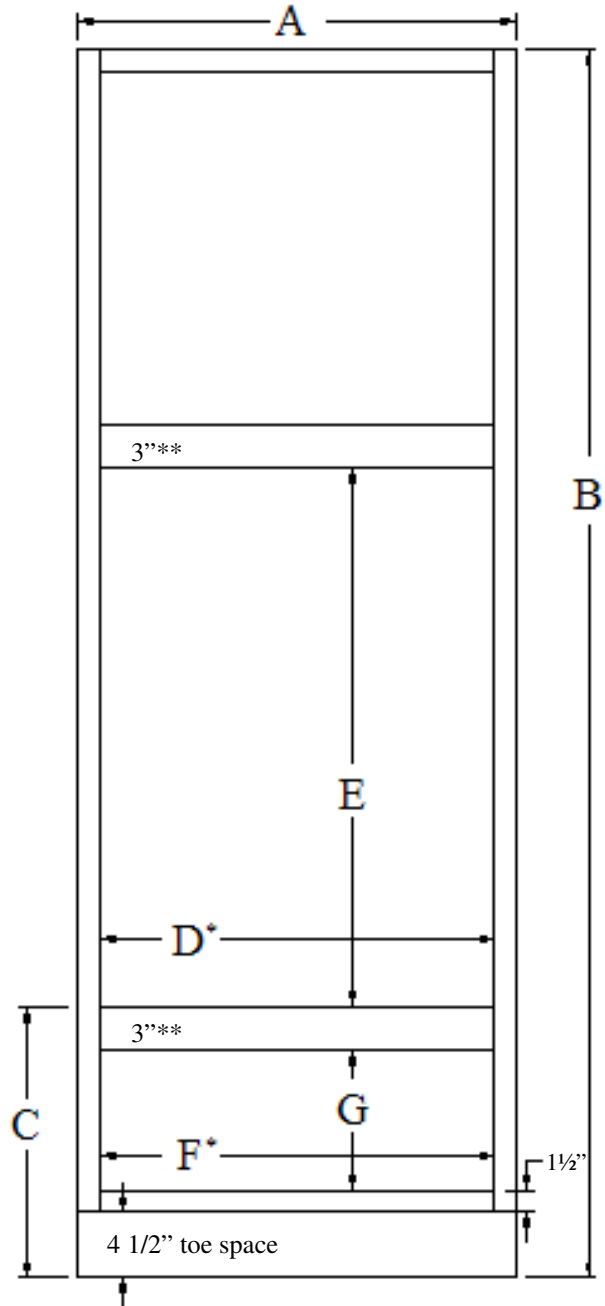
E= _____ Oven cutout height

F*= _____ Warming drawer cutout width

G= _____ Warming drawer cutout height

*Cutout may be no wider than 1 1/2" less the overall cabinet width, see chart

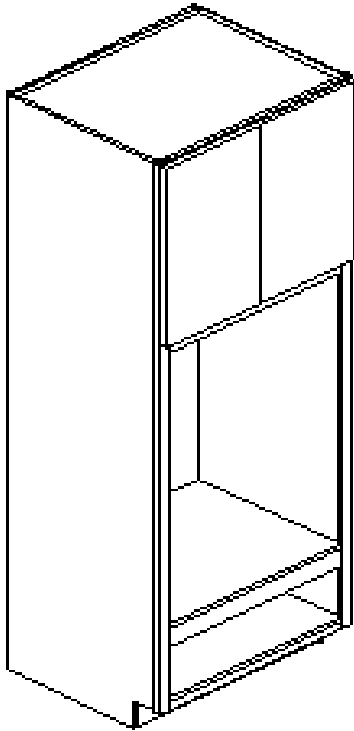
Cabinet width	Max cutout width*
24"	22 1/2"
27"	25 1/2"
30"	28 1/2"
33"	31 1/2"
36"	34 1/2"



To calculate dimension 'C' add:

(toe space height)	4 1/2"
(bottom frame rail)	+ 1 1/2"
(warming drawer cutout height)	+ 'G'
(mid-rail above warming drawer cutout)	+ 3"
total measurement for	'C'

TALL OVEN CABINET WITH WARMING DRAWER



- 24" deep standard
- Specify both cutout sizes (width X height) and distance from floor to bottom of lower cutout. Use of template page for TWDOC is recommended.
- Standard placement is 6" off of floor. A 3" rail will separate the cutouts unless otherwise specified.
- The cutout width can be no more than 1 1/2" less than the overall cabinet width, this leaves a minimum of 3/4" for each frame stile (left and right). Example: 30" wide cabinets, the largest cutout width allowable is 28 1/2".
- 3" rail above and below oven cutout.
- Number of shelves in the upper section of Tall Oven Cabinets will vary according to the opening size. This opening is determined by the oven cutout and height off the floor specifications.
- Cutout back at oven opening only.
- Toe base shipped loose for cabinets over 84" tall.
- See template page for more details.
- Appliance openings in frames will not have a beaded perimeter when ordered on beaded inset cabinetry. Designer must specify in writing if the appliance opening is to have a bead.

	PRODUCT CODE	LEVEL 1	LEVEL 2
84" tall	TWDOC248424		
	TWDOC278424		
	TWDOC308424		
	TWDOC338424		
	TWDOC368424		
90" tall	TWDOC249024		
	TWDOC279024		
	TWDOC309024		
	TWDOC339024		
	TWDOC369024		
93" tall	TWDOC249324		
	TWDOC279324		
	TWDOC309324		
	TWDOC339324		
	TWDOC369324		
96" tall	TWDOC249624		
	TWDOC279624		
	TWDOC309624		
	TWDOC339624		
	TWDOC369624		
102" tall	TWDOC2410224		
	TWDOC2710224		
	TWDOC3010224		
	TWDOC3310224		
	TWDOC3610224		

NOTE: TWDOC cabinet cannot have decorative ends except for a standard finish end or standard flush finish when using maximum width cutout for the specific cabinet's overall width.

TALL FILLERS

TALL FILLER

- 3/4" solid wood frame stock
- Standard widths of 3" and 6"
- Standard ships finished on face and all four 3/4" edges.



Fillers are shipped at the size indicated in the product nomenclature and are not cut down at the factory except by special request only.



PRODUCT LIST CODE	PRODUCT LIST CODE
3" wide filler	6" wide filler
TF379.5	TF679.5
TF384	TF684
TF385.5	TF685.5
TF388.5	TF688.5
TF390	TF 690
TF391.5	TF691.5
TF393	TF693
TF396	TF696
TF397.5	TF697.5
TF3102	TF6102
TF3103.5	TF6103.5
TF3108	TF6108

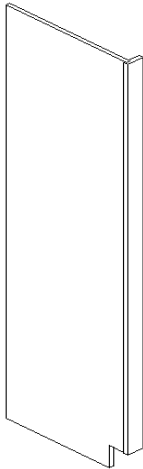
TALL OVERLAY FILLER STRIP

- Overlay only, does not include filler.
- Standard has all four edges profiled to match door edge.
- Length will match height of door/drawer overlay.
- Finished on face and all four 3/4" edges.
- Madrid, Sardinia, and Valletta overlays cannot be any smaller than 2 7/8" wide.
- When adding flutes:
2 flutes are standard on TOFS3 (2 3/4" wide)
5 flutes are standard on TOFS6 (5 3/4" wide)



	PRODUCT LIST CODE
2 3/4" wide	TOFS 384
	TOFS 390
	TOFS 393
	TOFS 396
	TOFS 3102
5 3/4" wide	TOFS 684
	TOFS 690
	TOFS 693
	TOFS 696
	TOFS 6102

TALL FILLERS WITH RETURN



TALL FILLER WITH RETURN

- 1 1/2" wide, 3" wide, or 6" wide solid wood face frame with 3/4" return panel.
- 13" deep, 24" deep, or 30" deep
- Specify L or R side for return (left shown).
- Return panel is finished on both sides.
- Add modification charge for flush finished end.
- Add modification charge for flush toe kick.
- Products over 96" tall may require a splice due to material limitations.

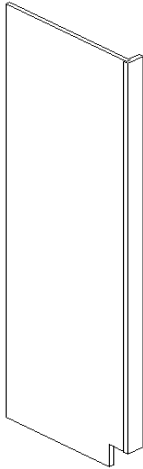


Fillers with returns are shipped at the size indicated in the product nomenclature and are not cut down at the factory except by special request only.

	PRODUCT CODE	LIST
	13" deep	
1.5" wide	TFR1.58413	
	TFR1.59013	
	TFR1.59313	
	TFR1.59613	
	TFR1.510213	
3" wide	TFR38413	
	TFR39013	
	TFR39313	
	TFR39613	
	TFR310213	
6" wide	TFR68413	
	TFR69013	
	TFR69313	
	TFR69613	
	TFR610213	
	24" deep	
1.5" wide	TFR1.58424	
	TFR1.59024	
	TFR1.59324	
	TFR1.59624	
	TFR1.510224	
3" wide	TFR38424	
	TFR39024	
	TFR39324	
	TFR39624	
	TFR310224	
6" wide	TFR68424	
	TFR69024	
	TFR69324	
	TFR69624	
	TFR610224	

(30" deep continued on next page)

TALL FILLERS WITH RETURN



TALL FILLER WITH RETURN

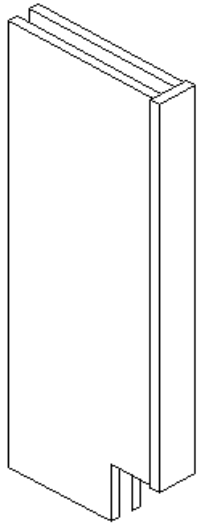
- 1 1/2" wide, 3" wide, or 6" wide solid wood face frame with 3/4" return panel.
- 13" deep, 24" deep, or 30" deep
- Specify L or R side for return (left shown).
- Return panel is finished on both sides.
- Add modification charge for flush finished end.
- Add modification charge for flush toe kick.
- Products over 96" tall may require a splice due to material limitations.



Fillers with returns are shipped at the size indicated in the product nomenclature and are not cut down at the factory except by special request only.

	PRODUCT CODE	LIST
	30" deep	
1.5" wide	TFR1.58430	
	TFR1.59030	
	TFR1.59330	
	TFR1.59630	
	TFR1.510230	
3" wide	TFR38430	
	TFR39030	
	TFR39330	
	TFR39630	
	TFR310230	
6" wide	TFR68430	
	TFR69030	
	TFR69330	
	TFR69630	
	TFR610230	

TALL FILLERS WITH RETURN



TALL FILLER WITH RETURN BOTH

- 3” wide or 6” wide solid wood face frame with two 3/4” return panels.
- 13” deep, 24” deep, or 30” deep
- Finished ends on both returns are standard.
- Add modification charge for flush finished ends.
- Add modification charge for flush toe kick.
- Products over 96” tall may require a splice due to material limitations.

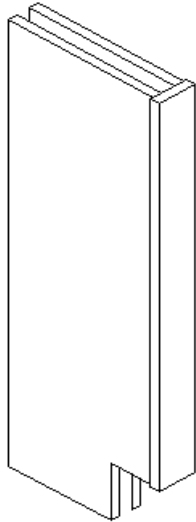


Fillers with returns are shipped at the size indicated in the product nomenclature and are not cut down at the factory except by special request only.

	PRODUCT CODE	LIST
	13” deep	
3” wide	TFRB38413	
	TFRB39013	
	TFRB39313	
	TFRB39613	
	TFRB310213	
6” wide	TFRB68413	
	TFRB69013	
	TFRB69313	
	TFRB69613	
	TFRB610213	
	24” deep	
3” wide	TFRB38424	
	TFRB39024	
	TFRB39324	
	TFRB39624	
	TFRB310224	
6” wide	TFRB68424	
	TFRB69024	
	TFRB69324	
	TFRB69624	
	TFRB610224	

(30” deep continued on next page)

TALL FILLERS WITH RETURN



	PRODUCT CODE	LIST
		30" deep
3" wide	TFRB38430	
	TFRB39030	
	TFRB39330	
	TFRB39630	
	TFRB310230	
6" wide	TFRB68430	
	TFRB69030	
	TFRB69330	
	TFRB69630	
	TFRB610230	

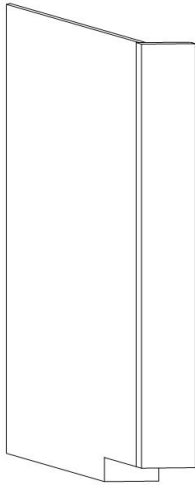
TALL FILLER WITH RETURN BOTH

- 3" wide or 6" wide solid wood face frame with two 3/4" return panels.
- 13" deep, 24" deep, or 30" deep
- Finished ends on both returns are standard.
- Add modification charge for flush finished ends.
- Add modification charge for flush toe kick.
- Products over 96" tall may require a splice due to material limitations.



Fillers with returns are shipped at the size indicated in the product nomenclature and are not cut down at the factory except by special request only.

TALL ANGLED FILLERS



PRODUCT CODE	LIST
TAFR384	
TAFR390	
TAFR393	
TAFR396	
TAFR3102	

TALL ANGLED FILLER WITH RETURN

- 3/4” return panel
- 45 degree angle
- Occupies 3” of cabinet run
- Specify left [L] or right [R] end of cabinet run (left shown).
- Overall depth is 24”, return depth is 21”
- Return panel is finished on both sides.
- Add modification charge for flush finished end.
- Products over 96” tall may require a splice due to material limitations.



Fillers with returns are shipped at the size indicated in the product nomenclature and are not cut down at the factory except by special request only.

TALL ANGLED FILLER

- 3/4” solid wood filler
- Edges cut for 45 degree installation
- Occupies 3” of cabinet run
- Specify left [L] or right [R] end of cabinet run (left shown).

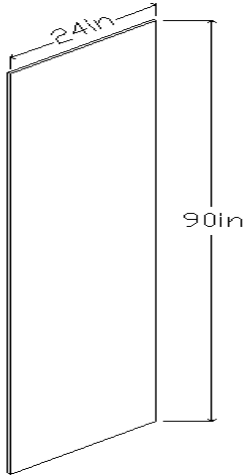


TAF384
TAF390
TAF393
TAF396
TAF3102



Fillers are shipped at the size indicated in the product nomenclature and are not cut down at the factory except by special request only.

REFRIGERATOR LEGS



ARLS2490 illustrated

REFRIGERATOR LEGS (STRAIGHT)

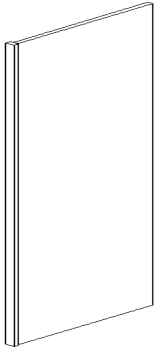
- 3/4" panel
- Finished both sides.
- Edge banding on one long 3/4" edge.
- Products over 96" tall may require a splice due to material limitations.



These panels are shipped at the size indicated in the product nomenclature and are not cut down at the factory except by special request only.

	PRODUCT CODE	LIST
13" wide	ARLS1384	
	ARLS1390	
	ARLS1393	
	ARLS1396	
	ARLS13102	
	ARLS13108	
24" wide	ARLS2484	
	ARLS2490	
	ARLS2493	
	ARLS2496	
	ARLS24102	
	ARLS24108	
27" wide	ARLS2784	
	ARLS2790	
	ARLS2793	
	ARLS2796	
	ARLS27102	
	ARLS27108	
30" wide	ARLS3084	
	ARLS3090	
	ARLS3093	
	ARLS3096	
	ARLS30102	
	ARLS30108	

REFRIGERATOR LEGS



REFRIGERATOR LEGS

- 1 1/2” front frame with 3/4” return panel.
- Finish end standard.
- Add modification charge for flush finished end.
- For a Furniture flush end only on the ARL, add the Furniture Refrigerator Leg modification, MFURNARL.
- Products over 96” tall may require a splice due to material limitations.



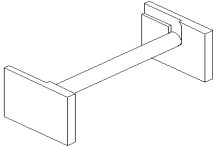

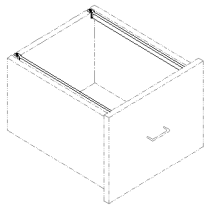
These panels are shipped at the size indicated in the product nomenclature and are not cut down at the factory except by special request only.

	PRODUCT CODE	LIST
13” wide	ARL1384	
	ARL1390	
	ARL1393	
	ARL1396	
	ARL13102	
	ARL13108	
24” wide	ARL2484	
	ARL2490	
	ARL2493	
	ARL2496	
	ARL24102	
	ARL24108	
27” wide	ARL2784	
	ARL2790	
	ARL2793	
	ARL2796	
	ARL27102	
	ARL27108	
30” wide	ARL3084	
	ARL3090	
	ARL3093	
	ARL3096	
	ARL30102	
	ARL30108	
Furniture Refrigerator Leg modification	MFURNARL	



NOTES

TALL ACCESSORIES

	PRODUCT CODE	LIST
TALL END SKIN, LOOSE <ul style="list-style-type: none"> 1/4" panel matching specie and finish of order. 	ATSKIN	SQ FT
CLOSET ROD <ul style="list-style-type: none"> 1 1/2" thick natural maple closet rod, removable. If cabinet has the MWI modification, the closet rod accessory will match the specie and finish of the order. 	ACR	
		
METAL CLOSET ROD <ul style="list-style-type: none"> 1 1/16" diameter steel closet rod with chrome finish, removable. 	AMR	
		
TALL TRAY DIVIDER <ul style="list-style-type: none"> 1/2" UV Birch veneer divider installed in upper section. Specify location and spacing of multiple dividers. Tray dividers will be equally spaced in the opening unless otherwise specified. Tray dividers are not removable. Adjustable shelves cannot be adjacent to tray dividers. A partition must be used if adjustable shelves are needed. 	ATTD	
TALL PARTITION <ul style="list-style-type: none"> 3/4" UV Birch veneer plywood, located in lower opening. When specified for cabinets with shelves, shelves are installed on both sides. Use when adding an accessory on one side of cabinet, shelves are installed on opposite side. Partition will be centered unless otherwise specified. Specify location of partition and side of accessory installation if desired. 	ATP	
TALL SHELF ON DOOR <ul style="list-style-type: none"> Wood shelf rack with adjustable shelves mounted on cabinet door of lower section. 	ATSD	
FLIPPER (POCKET) DOOR GLIDES Installed mechanism for stowing door inside cabinet as in entertainment cabinets. Mini-mum cabinet depth is 13 1/2" to allow for hardware.	AFDG	
<ul style="list-style-type: none"> Add to cabinet price; priced per set of doors. Adding flipper doors to a cabinet will cancel all adjustable shelves in that section. When needing adjustable shelves, a loose shelf accessory will need to be added to cabinet price for each adjustable shelf. When needing finished interior, the matching wood interior modification will need to be added to cabinet price. When adding flipper doors to cabinet, interior opening width will be 8" less than the overall cabinet width if FOL-C. If SOL or Inset, the interior opening width will be 9 1/4" less than the overall cabinet width. Example: 30" wide, FOL-C cabinet will have an interior opening size of 22" wide. Doors larger than 26" wide or 72" tall require large flipper door glides (ALFDG). 	ALFDG	
HANGING FILE RAILS <ul style="list-style-type: none"> One pair hanging file rails installed in drawer. Front to back rails illustrated. Standard guidelines for file rail direction: Cabinets with a <u>frame opening</u> of less than 15" wide will have file rails that run side to side. Cabinets with a 15" wide <u>frame opening</u> or greater will have file rails that run front to back. Specify direction of file rails only if different from standard. (15" wide cabinets cannot accept front to back file rails.)	AHANGINGFILE	\$ / pair of rails
<ul style="list-style-type: none"> Cannot fit most standard cabinet configurations (needs a 10" deep box to accommodate, MFC will be needed on cabinet to make this change) 		
		

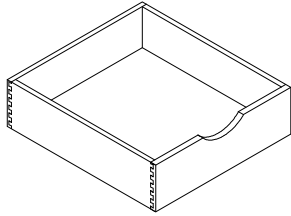


NOTES

TALL ACCESSORIES

PRODUCT
CODE LIST

DELUXE UNDERMOUNT ADJUSTABLE ROLLOUT SHELVES



2" HIGH (UP TO 24" WIDE)	ADUAROS2402
2" HIGH (UP TO 42" WIDE)	ADUAROS2502
4" HIGH (UP TO 24" WIDE)	ADUAROS2404
4" HIGH (UP TO 42" WIDE)	ADUAROS2504
6" HIGH (UP TO 24" WIDE)	ADUAROS2406
6" HIGH (UP TO 42" WIDE)	ADUAROS2506

Adjustable natural maple rollout shelves with Blumotion full extension, undermount drawer glides on wood pilasters. If the rollout and its components need to have the specie and finish match the interior of a cabinet with a MWI modification, a quote must be submitted prior to the order being placed for correct pricing and material availability.

- Price per rollout shelf
- 100# weight capacity
- Routed handpull centered in top edge of box front.
- Dovetail construction
- Fixed center frame stile is omitted when adding a full width rollout to a cabinet 39" wide and over or a sink base.
- Not recommended for cabinets less than 15" wide. Not available for cabinets less than 9" wide or 12" deep.

**Note: when using combination of rollouts and adjustable shelves in the same opening, rollouts will always be located at bottom of section unless otherwise specified.

See below for additional guidelines.

Rollout Installation Guidelines

We have classified the addition of rollouts into two different categories based on usage. First, adding rollouts to wall cabinets or an upper portion of any cabinet, will be based on the same set of rules. (Upper portion is defined as any section of any cabinet which also has a lower opening.) Then, the addition of rollouts to base cabinets and the lower portion of tall cabinets will be based on another set of rules.

1. Rollouts in wall units and upper portions of tall/base units. (Sink base cabinets will follow this same set of rules.)
 - a. When adding **a single rollout**, the rollout will be permanently mounted to the floor in that section, utilizing our Blumotion full extension under-mount glides.
 - b. Also, when adding **a single rollout**, the quantity of adjustable shelves in that section will remain the same.
 - c. When adding **more than one rollout** to a section all adjustable shelves will be deleted. When adding adjustable shelves back into the opening, each shelf will be notched to accept the ladders which are installed for the rollouts.
 - d. Also, when adding **more than one rollout** to a section our standard rollout ladder configuration will be utilized by installing the ladders full height in the interior of that section. (Full height is full usable height determined by Brighton.)

2. Rollouts in lower openings of base/tall units. (Except sink base cabinets.)
 - a. When adding **a single rollout** or **more than one rollout**, our standard rollout ladder configuration will be utilized by installing the ladders in the complete interior height of that section.
 - b. Also when adding **a single rollout** or **more than one rollout**, all adjustable shelves will be deleted. When adding adjustable shelves back into the opening, each shelf will be notched to accept the ladders which are installed for the rollouts.

These rules have been adopted as a standard practice for Brighton Cabinetry, Inc. Any deviation from this process must be in writing in the notes section of the order. All cabinets in our catalog with rollouts included will also follow the guidelines listed above.



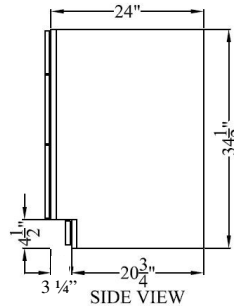
NOTES

TALL ACCESSORIES

PRODUCT CODE LIST

TOE KICK DRAWER - 24" DEEP

- Add to 24" deep cabinets.
- Operational, 2" high drawer box added into toe kick space.
- 3/4" thick solid wood face frame at bottom and sides.
- Toe notch for side of cabinet remains the same height and depth as standard after the 1/4" AMTK has been applied to adjacent cabinets.
- Actual front to back depth of drawer box is 18" for 24" deep unit.
- Drawer fronts are slab, 5 pc. not available.
- Minimum overall cabinet depth is 18" due to limited access to the drawer box under the cabinet.
- Illustration depicts B3D cabinet with ATKD accessory installed.



ATKD1824

ATKD2124

ATKD2424

ATKD2724

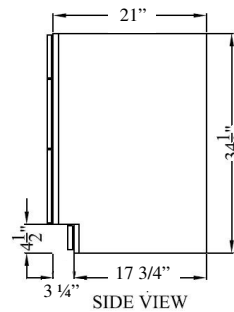
ATKD3024

ATKD3324

ATKD3624

TOE KICK DRAWER - 21" DEEP

- Add to 21" deep cabinets.
- Operational, 2" high drawer box added into toe kick space.
- 3/4" thick solid wood face frame at bottom and sides.
- Toe notch for side of cabinet remains the same height and depth as standard after the 1/4" AMTK has been applied to adjacent cabinets.
- Actual front to back depth of drawer box is 15" for 21" deep unit.
- Drawer fronts are slab, 5 pc. not available.
- Minimum overall cabinet depth is 18" due to limited access to the drawer box under the cabinet.
- Illustration depicts B3D cabinet with ATKD accessory installed.



ATKD1821

ATKD2121

ATKD2421

ATKD2721

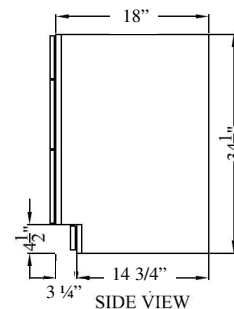
ATKD3021

ATKD3321

ATKD3621

TOE KICK DRAWER - 18" DEEP

- Add to 18" deep cabinets.
- Operational, 2" high drawer box added into toe kick space.
- 3/4" thick solid wood face frame at bottom and sides.
- Toe notch for side of cabinet remains the same height and depth as standard after the 1/4" AMTK has been applied to adjacent cabinets.
- Actual front to back depth of drawer box is 12" for 18" deep unit.
- Drawer fronts are slab, 5 pc. not available.
- Minimum overall cabinet depth is 18" due to limited access to the drawer box under the cabinet.
- Illustration depicts B3D cabinet with ATKD accessory installed.



ATKD1818

ATKD2118

ATKD2418

ATKD2718

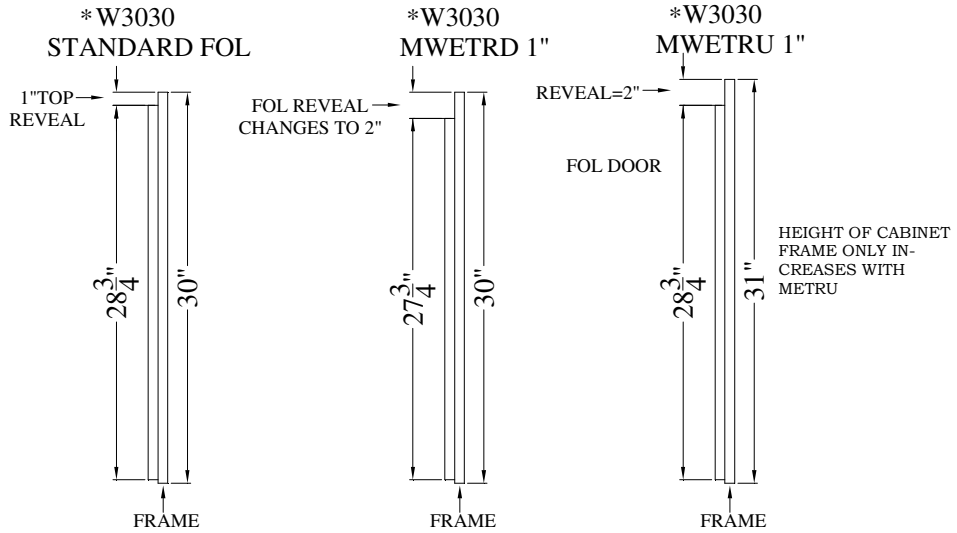
ATKD3018

ATKD3318

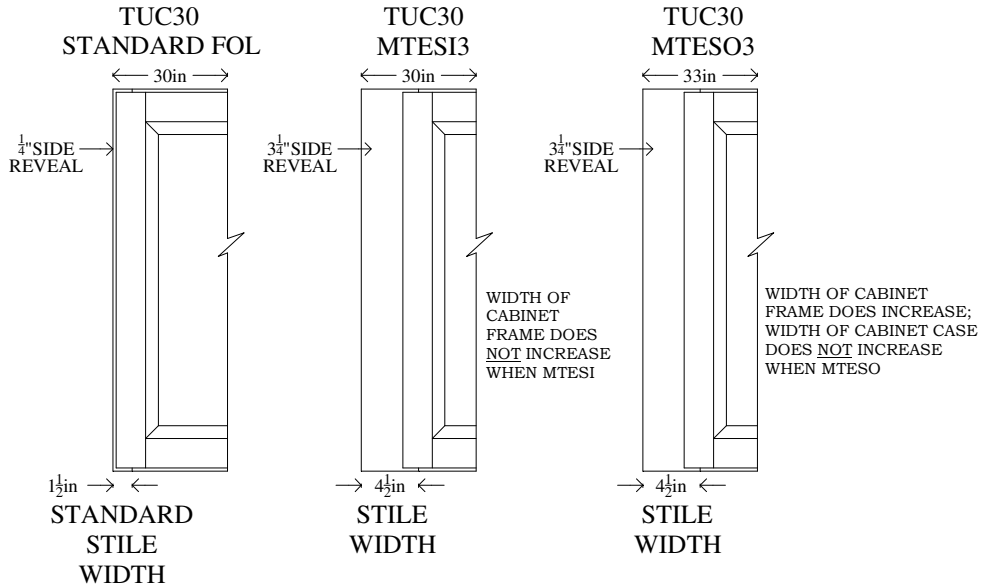
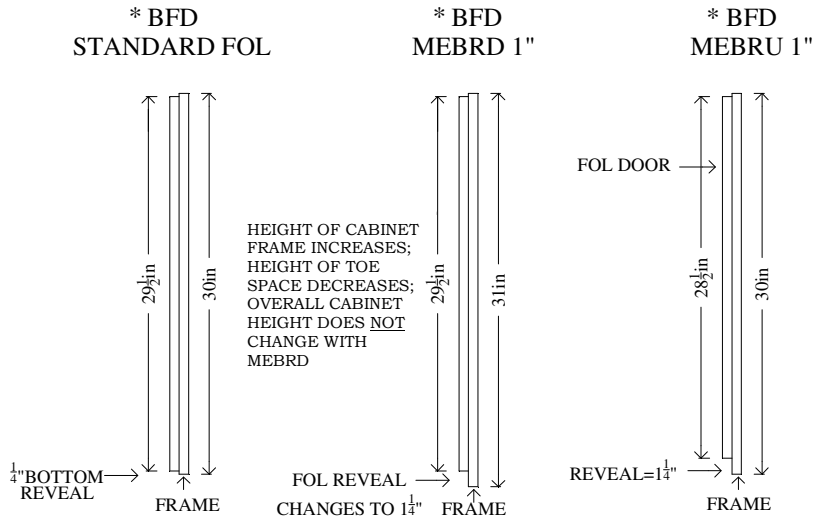
ATKD3618

EXTENDED RAIL AND STILE ILLUSTRATIONS

* Tall cabinet top rail modifications will function like wall cabinets.

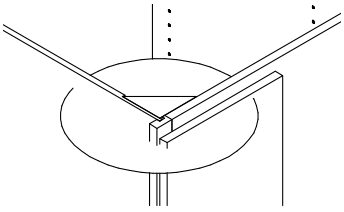


* Tall cabinet bottom rail modifications will function like base cabinets.



TALL MODIFICATIONS

	PRODUCT CODE	SPECIFY	LIST
TALL EXTENDED STILE OUT... UP TO 3" (see previous page for illustrations) Stile extends outward from cabinet, increasing overall frame width by the amount specified for the extension. Overlay filler strips are available for full-overlay flush look. (See tall cabinet accessories)	MTESO3	L / R	
TALL EXTENDED STILE OUT...UP TO 6" (see previous page for illustrations) Stile extends outward from cabinet, increasing overall frame width by the amount specified for the extension. Overlay filler strips are available for full-overlay flush look. (See tall cabinet accessories)	MTESO6	L / R	
TALL EXTENDED STILE IN...UP TO 3" (see previous page for illustrations) Stile extends inward, overall frame width does not change. Overlay filler strips are available for full-overlay flush look. (See tall cabinet accessories)	MTESI3	L / R	
TALL EXTENDED STILE IN...UP TO 6" (see previous page for illustrations) Stile extends inward, overall frame width does not change. Overlay filler strips are available for full-overlay flush look. (See tall cabinet accessories)	MTESI6	L / R	
TALL EXTENDED STILE DOWN Extends stile (specify left or right) down into the toe kick space to meet the floor.	MTESD	L / R	
EXTEND TOP OR BOTTOM RAIL UP (see previous page for illustrations) Add to cabinet price. Indicate overall dimension.	METRU MEBRU		
EXTEND TOP RAIL DOWN (see previous page for illustrations) Add to cabinet price. Indicate overall dimension.	METRD		
VALANCE TOP RAIL Extends a standard 1 1/2" wide top rail down for an overall rail width of 5". Price for cabinets up to 42" wide. Specify shape: Classic Arch, Elegant Arch, Straight, Arched, Furniture, Shaker style A or Shaker style C. Provide a sketch or template for custom pattern, requires quote.	MVTR		
VALANCE BOTTOM RAIL Price for cabinets up to 42" wide. Specify shape: Classic Arch, Elegant Arch, Arched, Furniture, Shaker style A or Shaker style C. Use MFTK, flush toe kick modification, when the Straight valance design is wanted. Provide a sketch or template for custom pattern, typically requires a quote. Base and tall cabinets with this bottom rail modification will still have the subtoe behind the valance bottom rail. The subtoe ships finished and will <u>not</u> require a separate AMTK.	MVBR		
TALL EXTEND SIDE BACK Specify the length of the extension beyond the standard depth. 48" overall maximum depth. Back edge will not be finished as standard. Please specify on order for finished edge and add appropriate EB charges.	MTESB	L / R	\$/ea.6"
TALL RECESSED SIDE Normally used when a recess allowance is needed for a field applied panel. The cabinet face frame and door reveals will not change with this modification. Most standard cabinets already have 1/4" recess behind the face frame, specify <u>TOTAL</u> amount needed. Maximum overall recess allowed = 7/8".	MTRS	L/R	





TALL MODIFICATIONS

	PRODUCT CODE	LIST
<p>TALL FRAME CHANGE</p> <p>Includes one or all changes made to frame. (excluding extended stiles and rails) Specify changes and dimensions; provide sketch</p>	MFC	
<p>INCREASE CASE DIMENSION MODIFICATION</p> <p>Used to increase height, and/or width, and/or depth above the largest standard sizes. Cabinet may be increased up to 3” larger for any or all dimensions. Dimension increases beyond 3” require a quote. Some restrictions apply due to material availability. Any cabinet increased in width to 39” or above will have a fixed center stile as standard. Drawer boxes and rollouts will increase with the cabinet depth up to 27” deep cabinets. Anything increasing over 27” in depth must be verified with Customer Service for availability before ordering. Wall cabinets and sink cabinets can be increased in <u>depth only</u> up to a maximum of 3” beyond the standard cabinet depth for no up charge at all.</p>	MICDIM	
<p>MATCHING WOOD INTERIOR</p> <p>Priced as % of list price, added to cabinet price. Wood specie and finish match frame and doors. When selecting matching wood interior on cabinets with more than one section (ie, tall cabinets or combined cabinets) the entire interior of all sections will be matching wood interior as standard. The grain on interior backs <u>may be</u> horizontal on cabinets larger than 48” wide.</p>	MMWI	
<p>COMBINE CABINET CHARGE</p> <p>Used to combine two or more cabinets. One charge per combination of two cabinets.</p>	COMBINE	
<p>TALL FRONT ONLY</p> <p>Subtract from base price of cabinet. Doors are hinged and working. Specify if fixed doors are required. Floor not included. Unless specified, front will be shipped without sub-toe kick. Overall frame height will be 4 1/2” less product height ordered unless MFTK (flush toe) is added. Example: TUC1884R (std. 84” high overall) + MTFRO ordered, shipped frame height = 79 1/2”.</p>	MTFRO	
<p>OMIT DOORS</p> <p>Interior remains standard finish unless matching wood interior modification is used.</p>	MOD	
<p>ADD CENTER STILE</p> <p>To add a vertical center stile to any cabinet. Standard 1 1/2” wide stile, specify width of stile if different dimension is desired.</p>	MACST	
<p>ADD CENTER RAIL</p> <p>To add a horizontal center rail and fixed floor to any cabinet. Standard 1 1/2” wide rail, specify width of rail if different dimension is desired. Include specific information for placement of rail, provide drawing if possible. Charge includes cost for dividing doors into separate uppers and lowers.</p>	MACRT	
<p>APPLIED MOLDING CHARGE</p> <p>Charge to apply molding, ornaments, and appliqué to cabinets.</p>	MAMC	\$ Each



NOTES



TALL MODIFICATIONS

	PRODUCT CODE	SPECIFY	LIST
TALL FINISHED END	MTFE	L / R	
Side of cabinet matches specie and stain of front frame and doors. Side retains 1/4" scribe reveal same as unfinished side. Note: When installing shallower cabinets against the side of a tall cabinet, it is recommended to use a flush finished end modification to correctly align cabinets.			SQ FT
TALL FLUSH FINISHED END	MTFFE	L / R	
A 1/4" panel is applied creating a flush end. Side of cabinet matches specie and stain of front frame and doors.			SQ FT
FINISHED BACKS 1/2"	MFBAH		
Back thickness does not affect overall depth of cabinet. Vertical grain is standard.			SQ FT
TALL FALSE DOOR ON END	MTFDE	L / R	
Includes flush finished end.			SQ FT
TALL WAINSCOT END PANEL	MTWEP	L / R	
A 3/4" panel constructed from same material as cabinet doors, applied flush with cabinet end. Center panel will be divided to best align with doors on face of cabinet. Bottom rail will be wider for toe space unless cabinet ships with a side toe or loose toe. Top rail is wider to allow for molding installation. Not available for mitered door styles.			SQ FT
TALL BEAD BOARD END	MTBDE	L / R	
1/2" solid wood, tongue and groove bead board, factory installed on cabinet side.			SQ FT
BEAD BOARD INTERIOR BACK	MBDIB		
1/2" solid wood, tongue and groove bead board installed in the back of cabinet.			SQ FT
TALL GROOVED PANEL LEFT / RIGHT	MTGP	L / R	
1/4" veneered panel with MDF core applied, creating a flush end. 1/8" wide, vertical 'V' grooves, spaced 1 1/2" apart. Other designs to match grooved doors are available upon request. Matches specie and stain of front frame and doors. Not available for any finish with wear sanding. Not available in Rustic Alder or Rustic Hickory: standard grade wood will be substituted.			SQ FT
TALL GROOVED PANEL INTERIOR BACK	MTGPIB		
1/4" veneered panel with MDF core installed in the back of the cabinet. 1/8" wide, vertical 'V' grooves, spaced 1 1/2" apart. Other designs to match grooved doors available upon request. Matches specie and stain of front frame and doors. Use with MWI modification to finish the remainder of cabinet interior. Not available for any finish with wear sanding. Not available in Rustic Alder or Rustic Hickory: standard grade wood will be substituted.			SQ FT
TALL GROOVED PANEL BACK (1/2")	MTGPBAH		
1/2" veneered panel with MDF core applied to the case back. 1/8" wide, vertical 'V' grooves, spaced 1 1/2" apart. Other designs to match grooved doors are available upon request. Matches specie and stain of front frame and doors. Back thickness does not affect overall depth of cabinet. Not available for any finish with wear sanding. Not available in Rustic Alder or Rustic Hickory: standard grade wood will be substituted.			SQ FT
TALL FINISHED TOP	MTFT		
Matches specie and finish of cabinet. Finished ASCRIBE-2 covers the exposed case sides and back for tall finished top. Edgebanding for the side edges and back top edge is an add-on option. This must be noted on order and appropriate EB charges apply.			
TALL FLUSH FINISHED TOP	MPFFT		
1/4" flush panel matches specie and finish of cabinet. To cover exposed side edges of flush finished top, flush finished ends must be ordered.			SQ FT



TALL MODIFICATIONS

	PRODUCT CODE	SPECIFY	LIST
<p>TALL SIDE ANGLED</p> <p>Side is angled, front frame is parallel to back. Include a top view sketch with dimensions of side and front. Specify a degree of angle. Use widest dimension of finished cabinet as initial starting price then add modification charge.</p>	MTSA	L / R	
<p>TALL ANGLED SIDE ENTRY</p> <p>This modification is like tall side angled but with frame and working door. Include a top view sketch with dimensions of side and front. Specify degree of angle and hinging. Use widest dimension of finished cabinet as initial starting price then add modification charge.</p>	MTAE	L / R	
<p>TALL ANGLED FRONT</p> <p>Front is angled, sides remain perpendicular to back. Include a top view sketch with dimensions of sides and front. Specify overall cabinet size. Indicate depth of right and left sides. Minimum depth is 4" for adjustable shelves. Use widest dimension of finished cabinet as initial starting price then add modification charge.</p>	MTAF	L / R	
<p>TALL END ENTRY</p> <p>Specify door hinging. Add modification charge to initial starting price of cabinet.</p>	MTEE	L / R	
<p>DOUBLE ENTRY</p> <p>Add modification charge to initial starting price of cabinet. Specify hinging on rear if different from front entry.</p>	MDE		
<p>FLUSH TOE KICK</p> <p>Per cabinet front Note: When adding this to base or tall cabinets and also requesting that the flush toe is cut into a valance shape, there will be a subtoe behind the valance bottom rail. The subtoe piece ships finished and does <u>not</u> require a separate AMTK.</p>	MFTK		
<p>LOOSE TOE KICK</p> <p>Shipped loose. Overall shipped cabinet height is reduced 4 1/2".</p>	MLSTK		
<p>OMIT TOE KICK</p> <p>Removes the toe kick area from the cabinet. Overall shipped cabinet height is reduced 4 1/2".</p>	NOTK		
<p>INTEGRATED TOE KICK</p> <p>Toe kick area of tall cabinet is integrated into the case construction. Used on cabinets over 84" tall that ship standard with a loose toe base. Note: Adding this modification could interfere with installation of the cabinet. Allow for proper ceiling clearance.</p>	MINTTK		
<p>SIDE TOE KICK</p> <p>Add to cabinet price Specify left, or right, or left and right</p>	MLTK MRTK MLRTK	(Left) (Right) (Left/Right)	
<p>BACK TOE KICK</p> <p>Add to cabinet price Specify back or combination of back and side(s)</p>	MBTK MBLTK MBRTK MBLRTK	(Back) (Back/Left) (Back/Right) (Back/Left/Right)	

TALL MODIFICATIONS

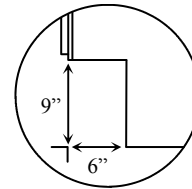
PRODUCT SPECIFY LIST
CODE

UNIVERSAL ACCESS TOE KICK SPACE

MUATOE 0

Modifies the cabinet's toe kick to 9" high x 6" deep as recommended by the Americans with Disabilities Act 2010 standards. Specify if other dimensions are needed.

Note: Using this modification can affect other aspects of the cabinetry and may cause some configurations to no longer be available. Examples of this include, but are not limited to, a B4D and a BM2DF.



TALL DUCT CUTOUT

MTDCO

Include a top view sketch with cutout dimensions and location.

TALL CLIPPED CORNER

MTCC L / R

Stile is angled at 45 degrees.
This modification does not increase the width or depth of the cabinet.
The face frame is decreased by 3" per clipped corner.

Per side

TALL FLUTING

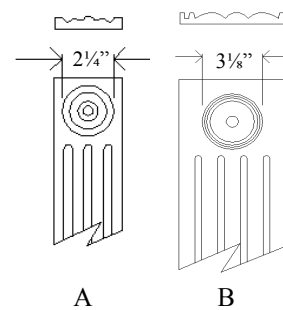
MTFLUTE

Three flutes are standard, based on 3" filler
Routed on filler or stile up to 6" wide.
Specify the number of flutes. (1 flute per inch is recommended).
Standard is 3/8" flute with 3/8" space between flutes.
Limits will normally align with adjacent cabinets.
Minimum filler width is 1 1/2".
Provide sketch on special fluting requirements.

ROSETTE DESIGN

MROSETTE

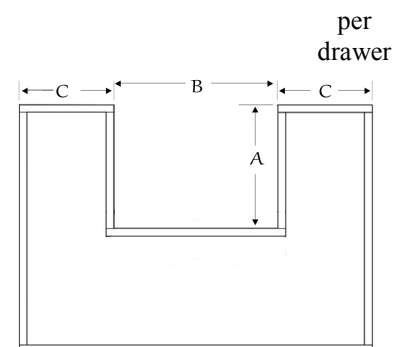
Routed into filler, usually accompanies fluting.
Style A (2 1/4") is for 3" filler or overlay filler (2 3/4") with machine or L149 edge. Minimum overlay filler width will be 3 1/8" for all other edge profiles.
Style B (3 1/8") is for 6" filler.



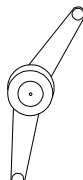
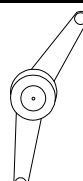
U-SHAPE DRAWER BOX MODIFICATION

MUDRBOX

Modifies an existing drawer box to have a cutout centered, side to side, allowing space for pipe work. Drawer box width must be at least 12" (12 3/8" frame opening). Must specify dimensions 'A' and 'B' as shown on the template. 'C' can be no less than 3".



TALL MODIFICATIONS

	PRODUCT CODE	SPECIFY	LIST
<p>TALL ADDITIONAL DRAWER, STANDARD</p> <p>Use this modification to add a drawer that would require a frame opening of 6" H or less. Blumotion glides standard: other glide styles will be substituted when the frame opening for the drawer boxes are under 6" wide or cabinet is less than 12" deep. This price includes drawer box, hardware, drawer front, and frame change.</p>	MTADS	SLAB 1INSLAB 5-PIECE	SOL/INSET FOLC
<p>TALL ADDITIONAL DRAWER, DEEP</p> <p>Use this modification to add a drawer that would require a frame opening greater than 6" high. Blumotion glides standard: other glide styles will be substituted when the frame opening for the drawer boxes are under 6" wide or cabinet is less than 12" deep. This price includes drawer box, hardware, drawer front and frame change.</p>	MTADD	SLAB 1INSLAB 5-PIECE	SOL/INSET FOLC
<p>5-PIECE DRAWER HEAD UPGRADE</p> <p>Price per drawer head. The top and bottom rails of the drawer head are cut down for most designs.</p>	5-P(RAIS) -FOL 5-P(FLAT) -FOL	5-P(RAIS) -SOL/INSET 5-P(FLAT) -SOL/INSET	
<p>1" THICK, SLAB DRAWER FRONT UPGRADE</p> <p>Price per drawer head. Not available to match all designs. Not recommended with slab doors or designs with flat center panels. See Introduction for more information.</p>	1-INSLAB-FOL	1-INSLAB-SOL/INSET	
<p>SCOOPED DRAWER SIDES</p> <p>Standard scoop is 2" down from top edge and begins 1-1/4" back from front edge unless otherwise specified. Minimum drawer box height is 4".</p>	MSDS		
<p>OMIT OPERATING DRAWER BOX</p> <p>Omits the operating drawer box and hardware from a standard cabinet. The drawer front will be attached to the cabinet as a false front. If the cabinet has more than one drawer top-to-bottom, this modification will remove the top drawer box unless otherwise specified. If the cabinet has multiple drawers side-to-side, you must specifically note on the order which box is to be removed, such as 'omit left drawer box'.</p>	MOODB		per drawer
<p>FLIP UP DOOR STAY</p> <ul style="list-style-type: none"> • Supports a door hinged to the top of a cabinet opening • Priced per cabinet (2 doors maximum) • Will not fit frame opening less than 7" high 		MFUDS	\$ / CAB (2 doors max.)
<p>FLIP DOWN DOOR STAY</p> <ul style="list-style-type: none"> • Supports a door hinged to the bottom of a cabinet opening • Priced per piece (2 doors maximum) • Will not fit frame opening less than 7" high 		MFDDS	\$ / CAB (2 doors max.)
<p>90 DEGREE HINGING (concealed hinge only)</p> <ul style="list-style-type: none"> • Hinge with restricted swing of approximately 90 degrees. • Available for <u>concealed</u> hinges only. • Priced per cabinet side • Specify side: L or R 	MT90DEG-L MT90DEG-R		