

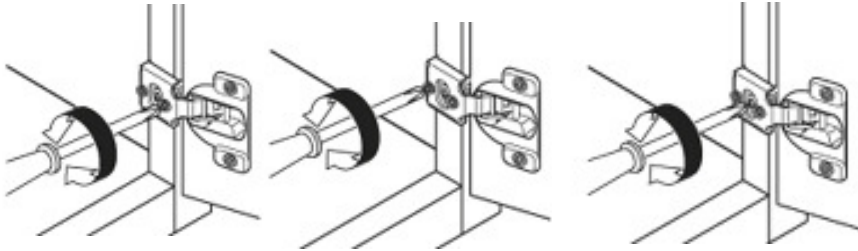
# Hardware Adjustment Instructions

## COMPACT 38N (SOL) Semi-Overlay Hinge

Cam Side Adjustment

Cam Depth Adjustment

Height Adjustment



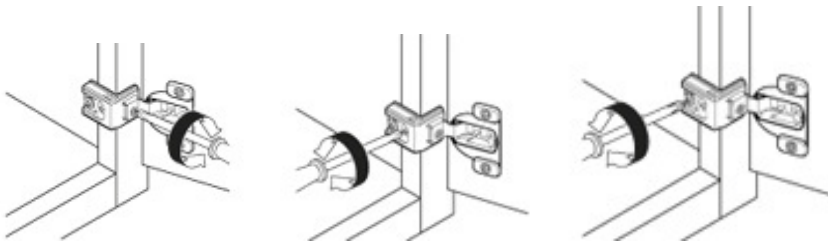
Hinges for small overlays from 1/4" to less than 1"  
105° opening angle  
Steel, nickel plated  
One-piece  
Wrap-around edge-mount assembly on the face frame  
Cup depth: 7/16"  
Self-closing mechanism  
38N - Independent 3 dimensional door adjustment  
Independent adjustment options (38N cam depth and side adjustment)

## COMPACT 38C (FOL) Full Overlay Hinge

Cam Side Adjustment

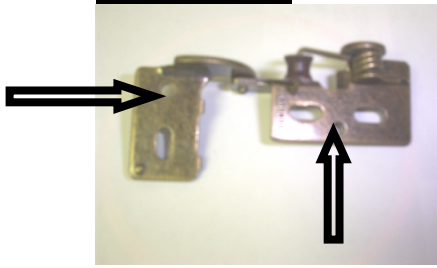
Height Adjustment

Cam Depth Adjustment



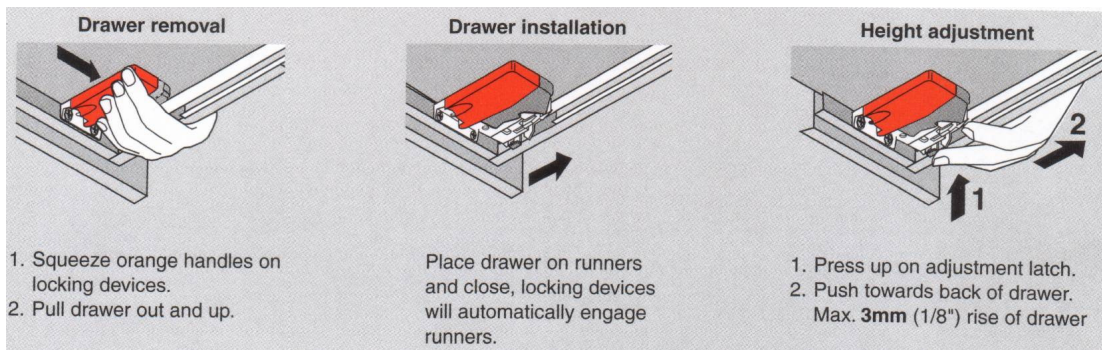
Hinges for large overlays from 1" to 1-5/8"  
107° opening angle  
Steel, nickel plated  
Wrap-around assembly on the frame  
Cup depth: 38C: 7/16"  
Self-closing mechanism  
Independent 3 dimensional door adjustment  
Independent adjustment options - cam adjustment  
depth and side, elongated height

## Knife Hinges

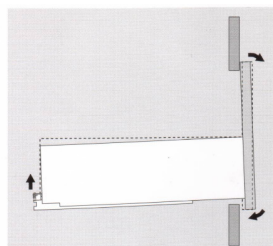
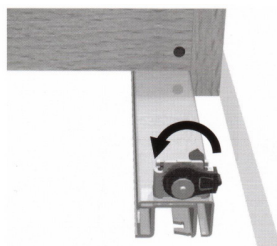


Two set-screws should be included for each hinge.  
After adjusting the doors for proper position and operation, one screw should be placed in each of the hinge's provided locations.

# Hardware Adjustment Instructions

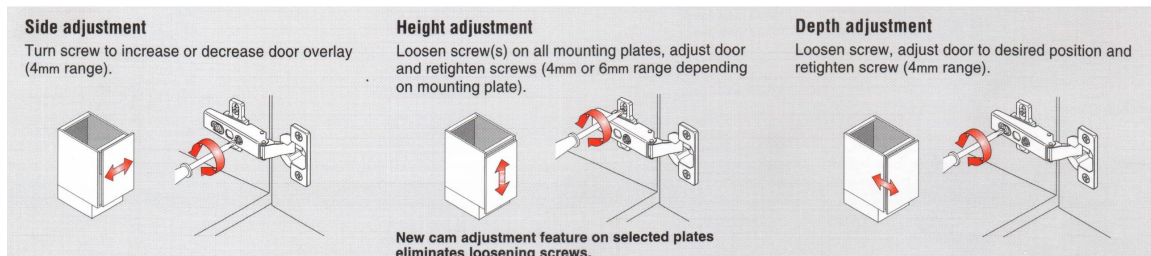


## Drawer Tilt Adjustment -- Full Extension Glides Only

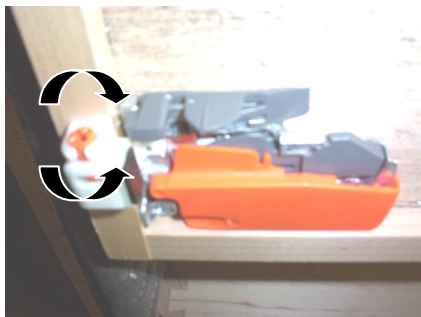


- **New drawer tilt adjustment**
- To fine-tune drawer front alignment
- +5mm tool free tilt adjustment (range varies depending on runner length and drawer front height)

## BUSP Style 170° Hinge



## Inset Drawer Front Adjustment



This adjustment is used to ensure that the inset drawer front is flush with the face frame. Adjust the glide stop as shown using a screw driver.