

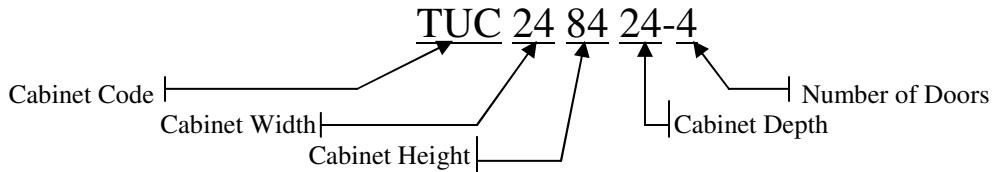
SPECIFICATIONS

TALL CABINETS

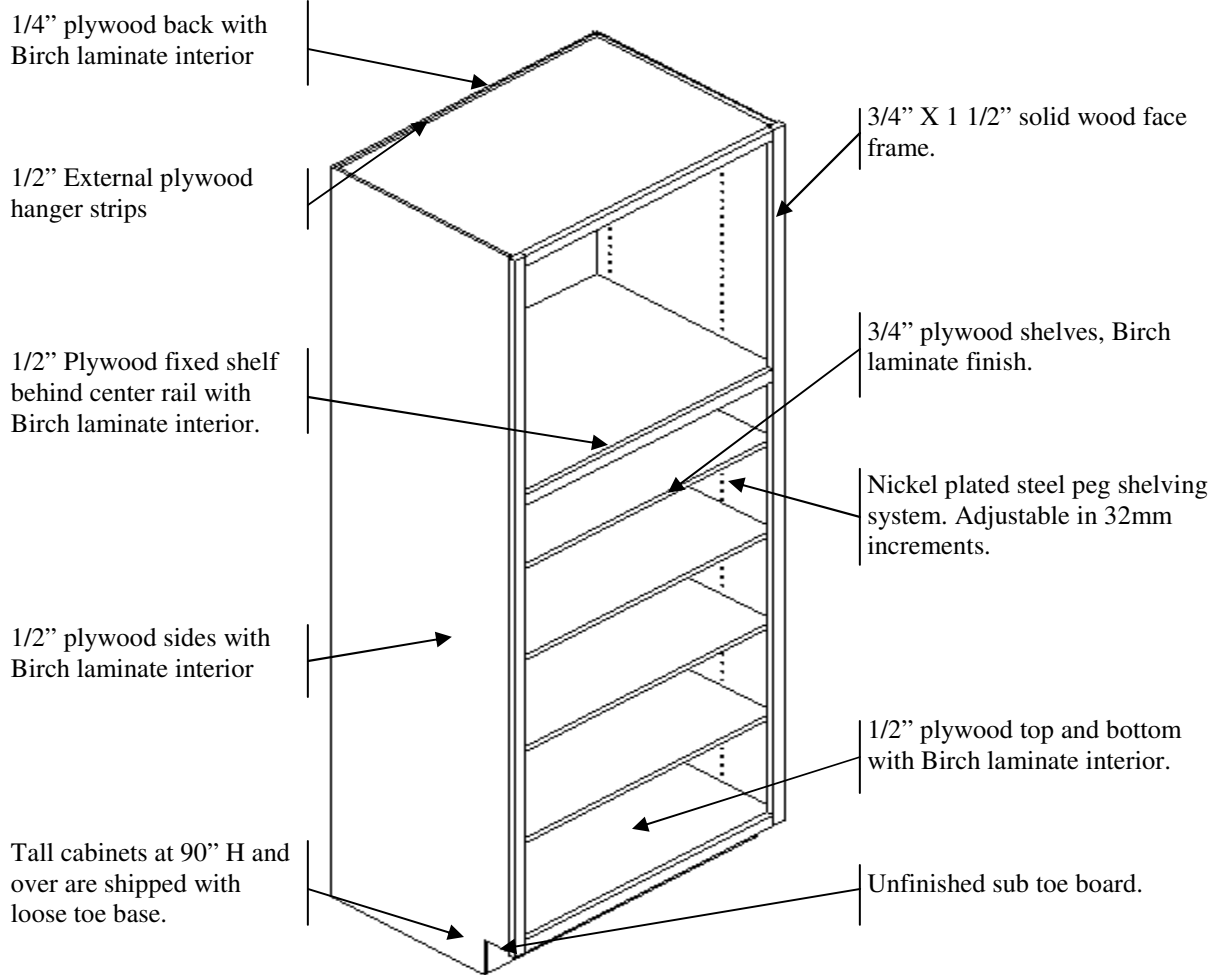
(See "Cabinet Construction Specifications" and "Pricing Procedures" for options.)

84", 90", 96" Tall are standard

Tall Cabinet Nomenclature



- STANDARD TOE KICK HEIGHT: 4 1/2"
- STANDARD LOWER OPENING HEIGHT = 57"



TALL CONTENTS

ACCESSORIES

CLOSET ROD.....	20
FLIPPER DOOR GLIDES.....	20
REFRIGERATOR LEGS.....	19
ROLLOUT SHELVES.....	20
SOFT CLOSE DOOR ATTACHMENT.....	20-B
TALL END PANEL SKINS.....	20
TALL PARTITION.....	20
TALL SHELVES ON DOOR.....	20
TOE KICK DRAWER.....	20-B
TRAY DIVIDER	20

CANNED GOOD STORAGE CABINET..... 4-A

FILLERS

OVERLAY FILLER STRIP.....	18
TALL FILLERS.....	18
TALL FILLER WITH RETURN.....	18-A
TALL ANGLED FILLER WITH RETURN.....	18

MODIFICATIONS

ADD CENTER RAIL.....	21
ADD CENTER STILE.....	21
ADDITIONAL DRAWER.....	25
ANGLED ENTRY.....	23
ANGLED FRONT.....	24
ANGLED SIDE.....	23
APPLIED MOLDING CHARGE	21
BEAD BOARD APPLIED.....	23
BEAD BOARD INTERIOR BACK	23
CLIPPED CORNER.....	24
DECREASE CASE DIMENSION CHARGE....	23
DOUBLE ENTRY.....	24
DUCT CUTOUT.....	24
END ENTRY.....	24
EXTEND SIDE BACK.....	24
EXTEND STILE.....	21-22
EXTEND TOP RAIL UP OR DOWN.....	21-22
5-PIECE DRAWER HEAD UPGRADE	25
FALSE DOOR ON END.....	23

MODIFICATIONS (CONTINUED)

FINISHED BACK.....	42
FINISHED END.....	21
FLUSH FINISHED END.....	23
FLUSH TOE KICK.....	25
FLUTING.....	25
FRAME CHANGE.....	24
FRONT ONLY.....	24
GROOVED PANEL.....	26
INCREASE CASE DIMENSION CHARGE.....	23
INWARD EXTENDED STILE.....	21-22
LOOSE TOE BASE.....	25
MATCHING WOOD INTERIOR.....	21
OMIT DOORS.....	24
REAR TOE KICK.....	25
RECESSED SIDE.....	26
ROSETTE DESIGN.....	25
SCOOPED DRAWER SIDES.....	25
SIDE TOE KICK.....	25
VALANCE TOP RAIL.....	21
VALANCE BOTTOM RAIL.....	21
WAINSCOT END PANEL.....	23

MULTI-FOOD STORAGE CABINET..... 5

OVEN CABINET SINGLE CUTOUT.

1 DRAWER AT BOTTOM/DOORS TOP.....	8-9
2 DRAWER AT BOTTOM/DOORS TOP.....	10-11
3 DRAWER AT BOTTOM/DOORS TOP.....	12-13
DOORS TOP AND BOTTOM.....	6-7

OVEN CABINET TWO CUTOUTS

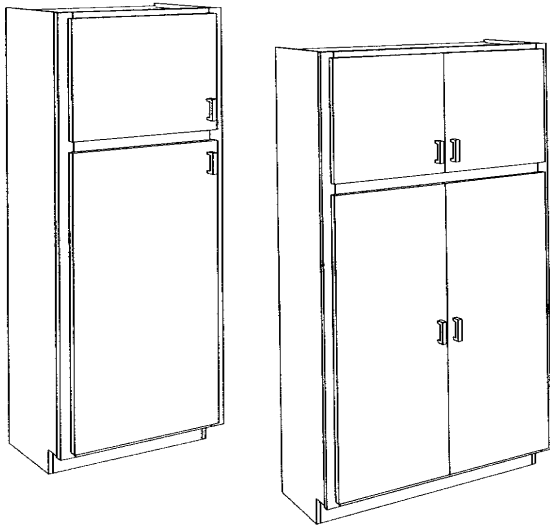
TALL MICROWAVE/OVEN CABINET.....	14-15
TALL OVEN CABINET W/ WARMING DRAWER	16-17

TALL ANGLED CABINET..... 5

UTILITY CABINETS 12" DEEP..... 3

UTILITY CABINETS 24" DEEP..... 4

TALL UTILITY CABINETS 12" DEEP



84" TALL CABINETS

- Full depth shelves.
- 1 adjustable shelf in upper section.
- 4 adjustable shelves in lower section

90" TALL CABINETS

- Full depth shelves.
- 1 adjustable shelf in upper section.
- 4 adjustable shelves in lower section.
- Toe base shipped loose

93" TALL CABINETS

- Full depth shelves
- 2 adjustable shelves in upper section
- 4 adjustable shelves in lower section
- Toe base shipped loose

96" TALL CABINETS

- Full depth shelves.
- 2 adjustable shelves in upper section.
- 4 adjustable shelves in lower section.
- Toe base shipped loose

NOTE: When adding rollouts to lower section all adjustable shelves will be deleted in that section. Specify when wanting adjustable shelves and rollouts in same opening.

84" TALL

PRODUCT CODE	A-LINE	B-LINE
TUC128412		
TUC158412		
TUC188412		
TUC218412		
TUC248412-4		
TUC278412		
TUC308412		
TUC338412		
TUC368412		

90" TALL

TUC129012		
TUC159012		
TUC189012		
TUC219012		
TUC249012-4		
TUC279012		
TUC309012		
TUC339012		
TUC369012		

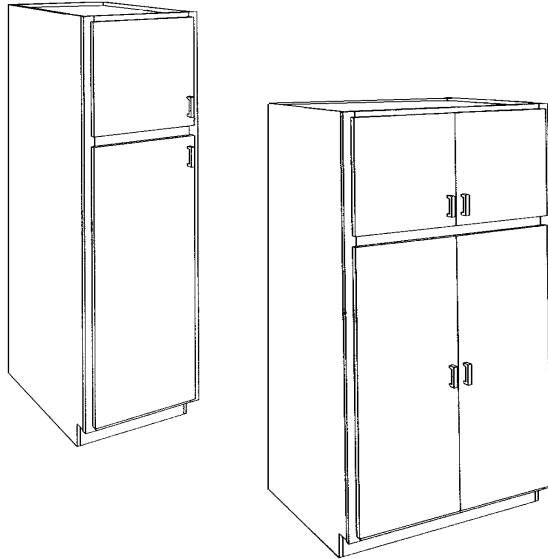
93" TALL

TUC129312		
TUC159312		
TUC189312		
TUC219312		
TUC249312-4		
TUC279312		
TUC309312		
TUC339312		
TUC369312		

96" TALL

TUC129612		
TUC159612		
TUC189612		
TUC219612		
TUC249612-4		
TUC279612		
TUC309612		
TUC339612		
TUC369612		

TALL UTILITY CABINETS 24" DEEP



84" TALL

PRODUCT CODE	A-LINE	B-LINE
--------------	--------	--------

TUC128424		
TUC158424		
TUC188424		
TUC218424		
TUC248424-4		
TUC278424		
TUC308424		
TUC338424		
TUC368424		

90" TALL

TUC129024		
TUC159024		
TUC189024		
TUC219024		
TUC249024-4		
TUC279024		
TUC309024		
TUC339024		
TUC369024		

84" TALL CABINETS

- Full depth shelves.
- 1 adjustable shelf in upper section.
- 4 adjustable shelves in lower section

90" TALL CABINETS

- Full depth shelves.
- 1 adjustable shelf in upper section.
- 4 adjustable shelves in lower section.
- Toe base shipped loose

93" TALL CABINETS

- Full depth shelves
- 2 adjustable shelves in upper section
- 4 adjustable shelves in lower section
- Toe base shipped loose

96" TALL CABINETS

- Full depth shelves.
- 2 adjustable shelves in upper section.
- 4 adjustable shelves in lower section.
- Toe base shipped loose

93" TALL

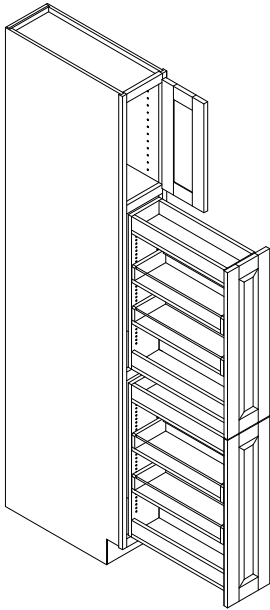
TUC129324		
TUC159324		
TUC189324		
TUC219423		
TUC249324-4		
TUC279324		
TUC309324		
TUC339324		
TUC369324		

96" TALL

TUC129624		
TUC159624		
TUC189624		
TUC219624		
TUC249624-4		
TUC279624		
TUC309624		
TUC339624		
TUC369624		

NOTE: When adding rollouts to lower section all adjustable shelves will be deleted in that section. Specify when wanting adjustable shelves and rollouts in same section.

TALL CANNED GOOD STORAGE



1-3/4" adjustable shelf
in upper section

1-3/4" adjustable shelf
in upper section

2-3/4" adjustable shelves
in upper section

2-3/4" adjustable shelves
in upper section

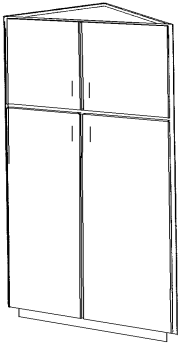
PRODUCT CODE	A-LINE	B-LINE
TCGS98424		
TCGS128424		
TCGS158424		
TCGS188424		
TCGS218424		
TCGS99024		
TCGS129024		
TCGS159024		
TCGS189024		
TCGS219024		
TCGS99324		
TCGS129324		
TCGS159324		
TCGS189324		
TCGS219324		
TCGS99624		
TCGS129624		
TCGS159624		
TCGS189624		
TCGS219624		

- 2 separate pullout canned good storage racks with adjustable shelves.
- 2 canned good shelves per pullout
- Top opening does not have pullout but instead will have full depth adjustable shelves based on overall cabinet height.
- 90", 93", and 96" tall cabinets will ship with loose toe base.
- Specify hinge side for top door.

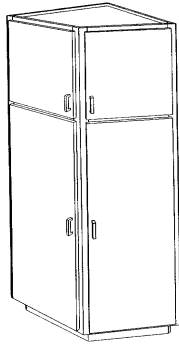
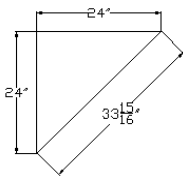


Intentionally Left Blank

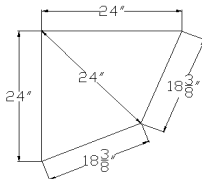
TALL ANGLED CABINETS 24" DEEP



TAC-1



TAC-2

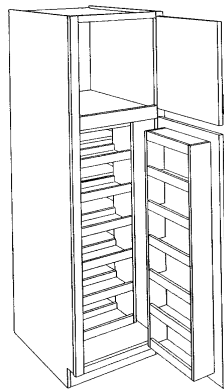
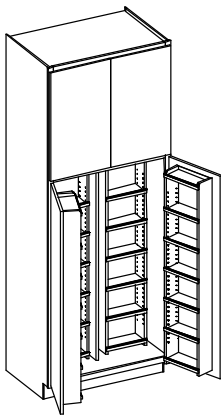


1 FRONT & 2 FRONT ANGLED CABINETS

- 4 adjustable shelves in lower section.
- 84" & 90" tall cabinets: 1 shelf in upper section
- 93" & 96" tall cabinets: 2 shelves in upper section.
- Toe base shipped loose for cabinets 90" tall and taller.

PRODUCT CODE	A-LINE	B-LINE
TAC-1 248424		
TAC-1 249024		
TAC-1 249324		
TAC-1 249624		
TAC-2 248424		
TAC-2 249024		
TAC-2 249324		
TAC-2 249624		

TALL MULTI-FOOD STORAGE CABINETS, 24" DEEP



2-DOOR

4-DOOR

PRODUCT CODE	A-LINE	B-LINE
TMFS188424		
TMFS189024		
TMFS189324		
TMFS189624		
TMFS368424		
TMFS369024		
TMFS369324		
TMFS369624		

TALL MULTI-FOOD STORAGE

- Wood shelf units
- Lower section has 4 adjustable shelves on each swing out and door mounted storage rack. 4 shallow adjustable shelves at back.
- 36" wide cabinet has center partition in lower section.
- 84" & 90" tall cabinet: 1 shelf in upper section.
- 93" & 96" tall cabinet: 2 shelves in upper section.
- Toe base shipped loose for cabinets 90" tall and taller.

TOC

Tall Oven Cabinet

**Standard 3" wide rails above and below cutout,
specify if another dimension is required**

**For figuring reveals for install kits,
drw. Fronts overlay the oven rail by the
following standard amounts:

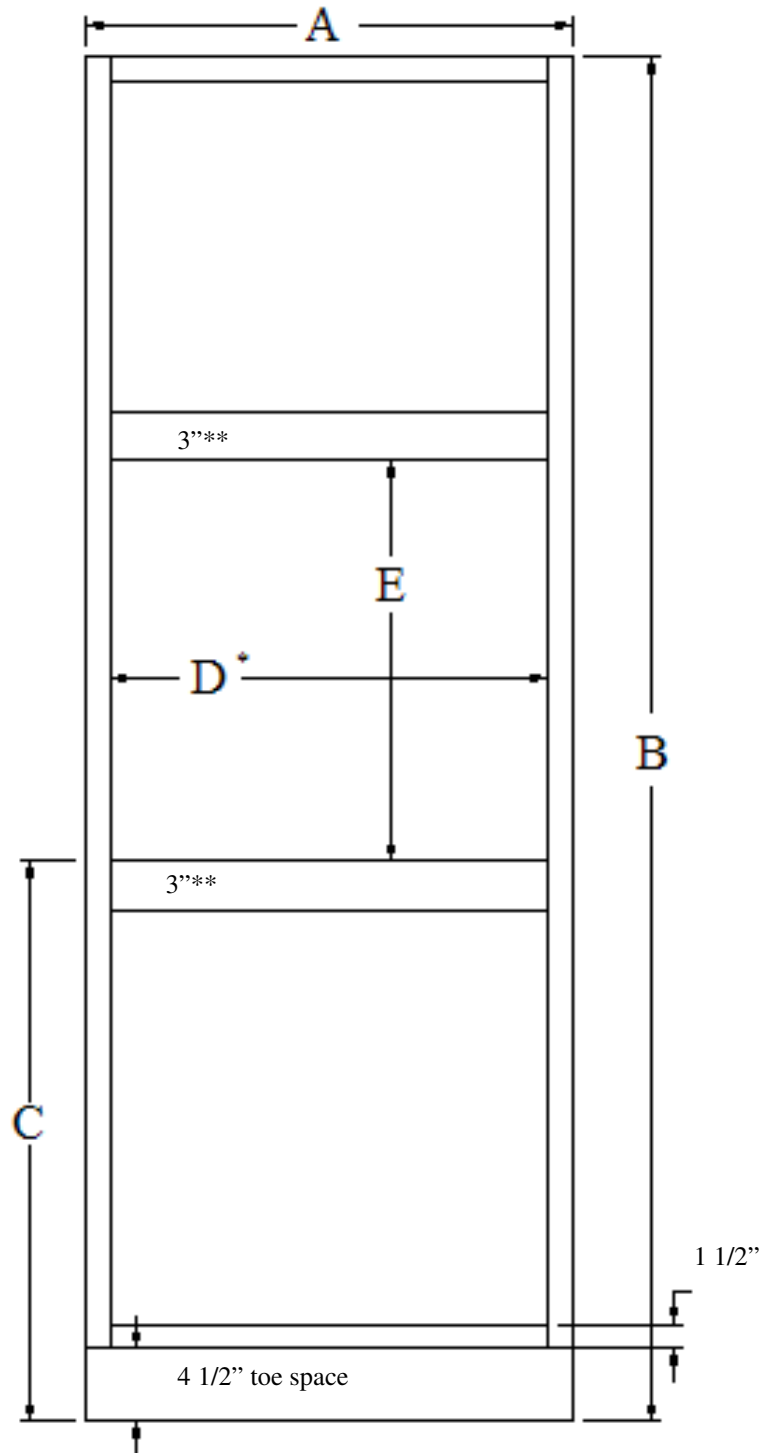
Hinge	Overlay
FOL-C	1 1/4"
SOL-C/SOL-K	3/8"
SOL-K LIPPED	5/16" ***
Specify if another dimension is desired ***	

***SOL-K Lipped overlays cannot
be modified

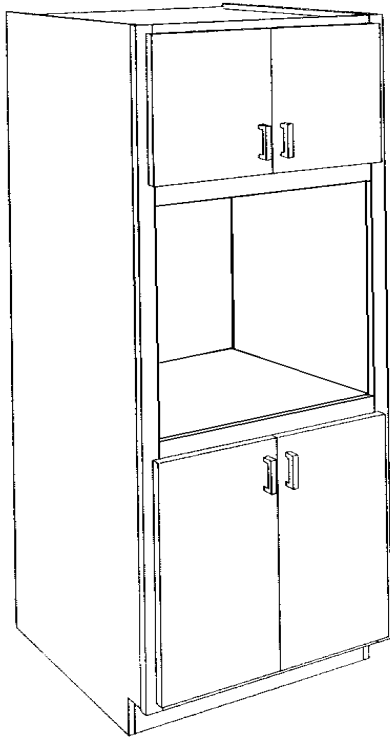
*Max cutout widths

Cabinet width	Max cutout width
24"	22 1/2"
27"	25 1/2"
30"	28 1/2"
33"	31 1/2"
36"	34 1/2"

Provide the following dimensions:
A= _____ Overall cabinet width
B= _____ Overall cabinet height
C= _____ Ht. cutout to start from floor (recommended ht. of 36" to align with std. base height cabinets)
D*= _____ Oven cutout width
E= _____ Oven cutout height
*Cutout may be no wider than 1 1/2" less than overall cabinet width—see chart



TALL OVEN CABINETS 4 DOORS, 24" DEEP



84" TALL

PRODUCT CODE	A-LINE	B-LINE
--------------	--------	--------

TOC248424		
-----------	--	--

TOC278424		
-----------	--	--

TOC308424		
-----------	--	--

TOC338424		
-----------	--	--

TOC368424		
-----------	--	--

90" TALL

TOC249024		
-----------	--	--

TOC279024		
-----------	--	--

TOC309024		
-----------	--	--

TOC339024		
-----------	--	--

TOC369024		
-----------	--	--

93" TALL

TOC249324		
-----------	--	--

TOC279324		
-----------	--	--

TOC309324		
-----------	--	--

TOC339324		
-----------	--	--

TOC369324		
-----------	--	--

96" TALL

TOC249624		
-----------	--	--

TOC279624		
-----------	--	--

TOC309624		
-----------	--	--

TOC339624		
-----------	--	--

TOC369624		
-----------	--	--

TALL OVEN CABINETS

- Specify the cutout size (width X height) and distance from floor to bottom of cutout. To allow for doors equal to standard base height, cutout must start at 36" off of floor
- The cutout width can be no more than 1 1/2" less than the overall cabinet width, this leaves a minimum of 3/4" for each frame stile (left and right). Example: 30" wide cabinets, the largest cutout width allowable is 28 1/2".
- 3" rail above and below cutout.
- Number of shelves in the upper section of Tall Oven Cabinets will vary according to the opening size. This opening is determined by the oven cutout and height off the floor.
- Cutout back at oven opening.
- Toe base shipped loose for cabinets 90" tall and taller.
- See spec sheet for more details

T1DOC

Tall One Drawer Oven Cabinet

Standard 3" wide rails above and below cutout,
specify if another dimension is required

**For figuring reveals for install kits,
drw. Fronts overlay the oven rail by the
following standard amounts:

Hinge	Overlay
FOL-C	1 1/4"
SOL-C/SOL-K	3/8"
SOL-K LIPPED	5/16" ***
Specify if another dimension is desired ***	

***SOL-K Lipped overlays cannot
be modified

*Max cutout widths

Cabinet width	Max cutout width
24"	22 1/2"
27"	25 1/2"
30"	28 1/2"
33"	31 1/2"
36"	34 1/2"

Provide the following dimensions:

A= _____ Overall cabinet width

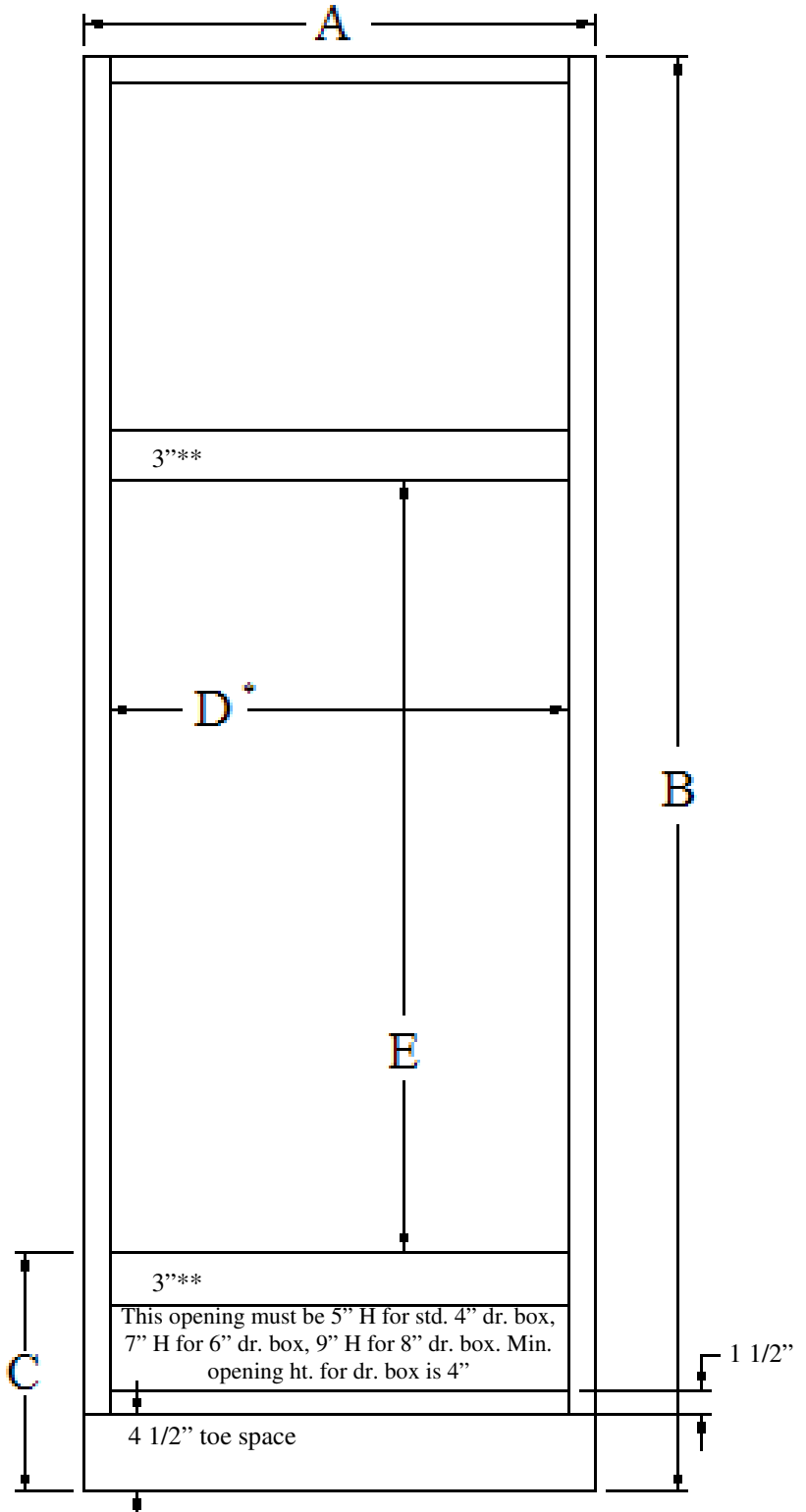
B= _____ Overall cabinet height

C= _____ Ht. cutout to start from floor
(recommended min. height = 14")

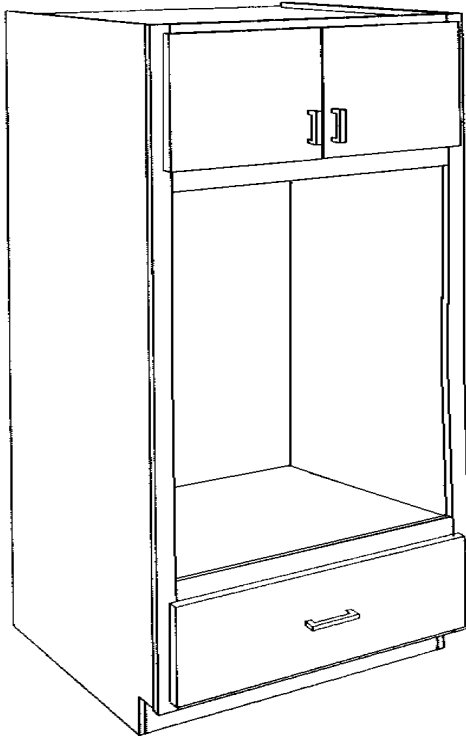
D*= _____ Oven cutout width

E= _____ Oven cutout height

*Cutout may be no wider than 1 1/2" less than
overall cabinet width—see chart



TALL OVEN CABINETS 1 DRAWER & 2 DOORS, 24" DEEP



	PRODUCT CODE	A-LINE	B-LINE
84" TALL	T1DOC248424		
	T1DOC278424		
	T1DOC308424		
	T1DOC338424		
	T1DOC368424		
90" TALL	T1DOC249024		
	T1DOC279024		
	T1DOC309024		
	T1DOC339024		
	T1DOC369024		
93" TALL	T1DOC249324		
	T1DOC279324		
	T1DOC309324		
	T1DOC339324		
	T1DOC369324		
96" TALL	T1DOC249624		
	T1DOC279624		
	T1DOC309624		
	T1DOC339624		
	T1DOC369624		

TALL OVEN CABINETS

- Specify the cutout size (width X height) and distance from floor to bottom of cutout. To allow for a standard size drawer box at the bottom, the cutout must start at least 14" off of floor.
- The cutout width can be no more than 1 1/2" less than the overall cabinet width, this leaves a minimum of 3/4" for each frame stile (left and right). Example: 30" wide cabinets, the largest cutout width allowable is 28 1/2".
- 3" rail above and below cutout.
- Number of shelves in the upper section of Tall Oven Cabinets will vary according to the opening size. This opening is determined by the oven cutout and height off the floor.
- Cutout back at oven opening.,
- Toe base shipped loose for cabinets 90" tall and taller.
- See spec sheet for more details

T2DOC

Tall Two Drawer Oven Cabinet

Standard 3" wide rails above and below cutout,
specify if another dimension is required

**For figuring reveals for install kits,
drw. Fronts overlay the oven rail by the
following standard amounts:

Hinge	Overlay
FOL-C	1 1/4"
SOL-C/SOL-K	3/8"
SOL-K LIPPED	5/16" ***
Specify if another dimension is desired ***	

***SOL-K Lipped overlays cannot
be modified

*Max cutout widths

Cabinet width	Max cutout width
24"	22 1/2"
27"	25 1/2"
30"	28 1/2"
33"	31 1/2"
36"	34 1/2"

Provide the following dimensions:

A= _____ Overall cabinet width

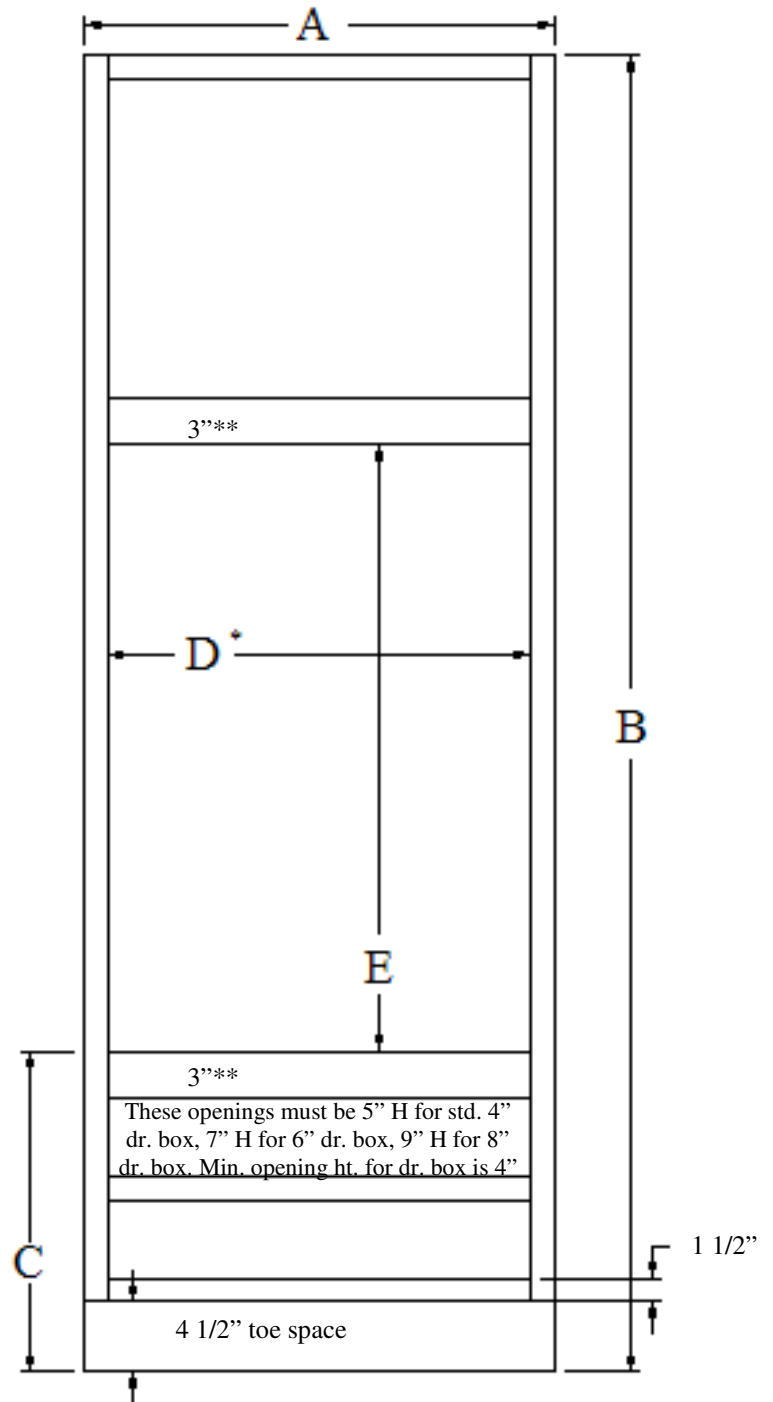
B= _____ Overall cabinet height

C= _____ Ht. cutout to start from floor
(recommended ht. of 20 1/2" to allow
for 2 std. 4" drw. boxes)

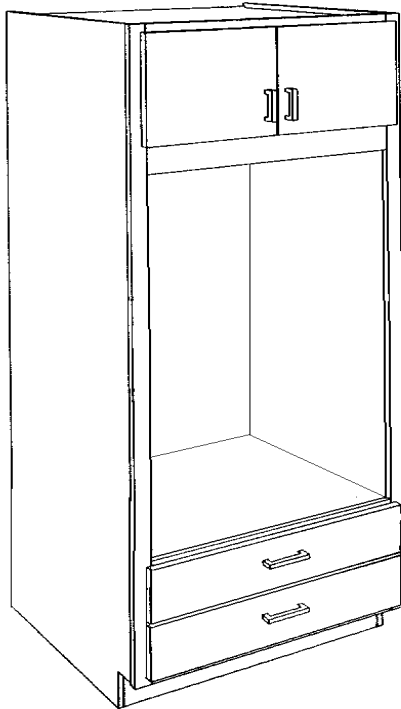
D*= _____ Oven cutout width

E= _____ Oven cutout height

*Cutout may be no wider than 1 1/2" less than
overall cabinet width—see chart



TALL OVEN CABINETS 2 DRAWERS & 2 DOORS, 24" DEEP



84" TALL

PRODUCT CODE	A-LINE	B-LINE
T2DOC248424		
T2DOC278424		
T2DOC308424		
T2DOC338424		
T2DOC368424		

90" TALL

T2DOC249024		
T2DOC279024		
T2DOC309024		
T2DOC339024		
T2DOC369024		

93" TALL

T2DOC249324		
T2DOC279324		
T2DOC309324		
T2DOC339324		
T2DOC369324		

96" TALL

T2DOC249624		
T2DOC279624		
T2DOC309624		
T2DOC339624		
T2DOC369624		

TALL OVEN CABINETS

- Specify the cutout size (width X height) and distance from floor to bottom of cutout. To allow for 2 standard size drawer boxes, the cutout must start at least 20 1/2" off of floor.
- The cutout width can be no more than 1 1/2" less than the overall cabinet width, this leaves a minimum of 3/4" for each frame stile (left and right). Example: 30" wide cabinets, the largest cutout width allowable is 28 1/2".
- 3" rail above and below cutout.
- Number of shelves in the upper section of Tall Oven Cabinets will vary according to the opening size. This opening is determined by the oven cutout and height off the floor.
- Drawers will be equal height unless otherwise specified.
- Cutout back at oven opening.
- Toe base shipped loose for cabinets 90" tall and taller.
- See spec sheet for more details

T3DOC

Tall Three Drawer Oven Cabinet

**Standard 3" wide rails above and below cutout,
specify if another dimension is required**

**For figuring reveals for install kits,
drw. Fronts overlay the oven rail by the
following standard amounts:

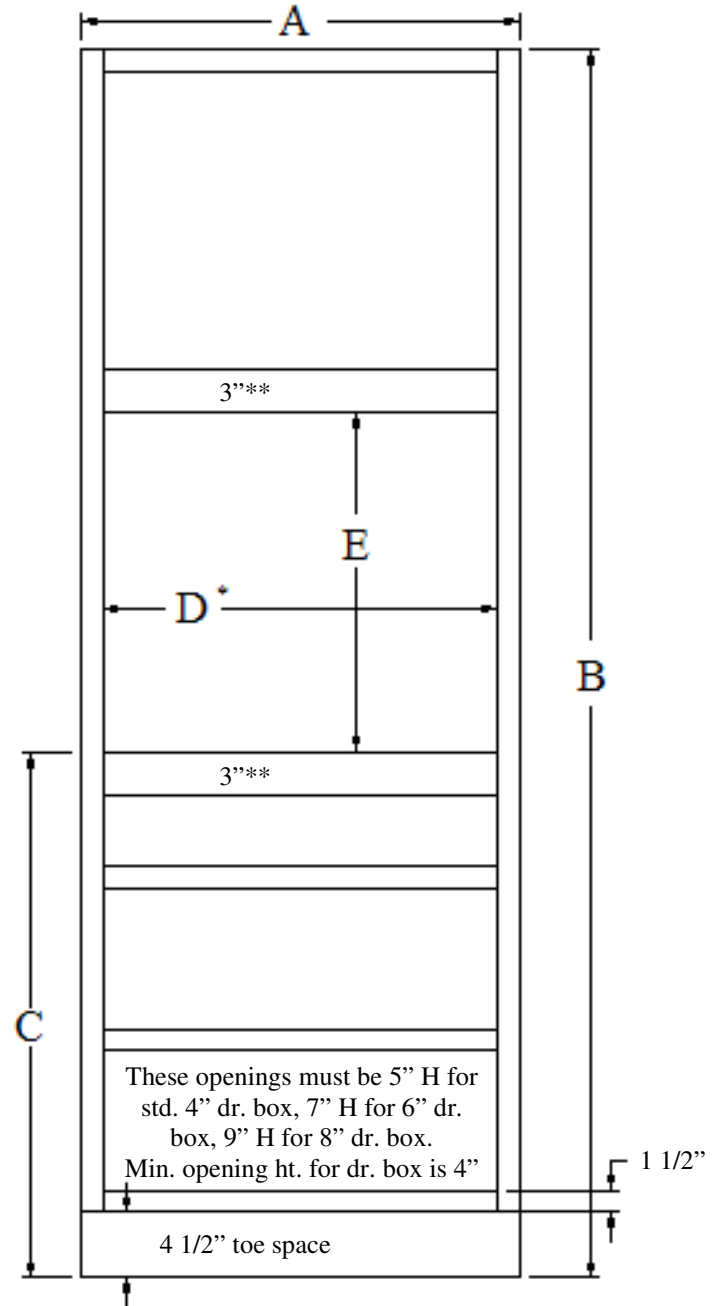
Hinge	Overlay
FOL-C	1 1/4"
SOL-C/SOL-K	3/8"
SOL-K LIPPED	5/16" ***
Specify if another dimension is desired ***	

***SOL-K Lipped overlays cannot
be modified

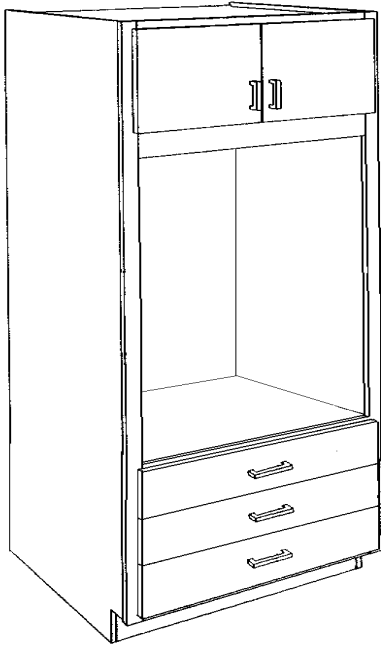
*Max cutout widths

Cabinet width	Max cutout width
24"	22 1/2"
27"	25 1/2"
30"	28 1/2"
33"	31 1/2"
36"	34 1/2"

Provide the following dimensions:
A= _____ Overall cabinet width
B= _____ Overall cabinet height
C= _____ Ht. cutout to start from floor (recommended ht. of 36" to align with std. base height cabinets)
D*= _____ Oven cutout width
E= _____ Oven cutout height
*Cutout may be no wider than 1 1/2" less than overall cabinet width—see chart



TALL OVEN CABINETS 3 DRAWERS & 2 DOORS 24" DEEP



84" TALL

PRODUCT CODE	A-LINE	B-LINE
--------------	--------	--------

T3DOC248424		
-------------	--	--

T3DOC278424		
-------------	--	--

T3DOC308424		
-------------	--	--

T3DOC338424		
-------------	--	--

T3DOC368424		
-------------	--	--

90" TALL

T3DOC249024		
-------------	--	--

T3DOC279024		
-------------	--	--

T3DOC309024		
-------------	--	--

T3DOC339024		
-------------	--	--

T3DOC369024		
-------------	--	--

93" TALL

T3DOC249324		
-------------	--	--

T2DOC279324		
-------------	--	--

T2DOC309324		
-------------	--	--

T2DOC339324		
-------------	--	--

T2DOC369324		
-------------	--	--

96" TALL

T3DOC249624		
-------------	--	--

T3DOC279624		
-------------	--	--

T3DOC309624		
-------------	--	--

T3DOC339624		
-------------	--	--

T3DOC369624		
-------------	--	--

TALL OVEN CABINETS

- Specify the cutout size (width X height) and distance from floor to bottom of cutout. To allow for drawers equal to standard height three drawer base, the cutout must start at 36" off of floor.
- The cutout width can be no more than 1 1/2" less than the overall cabinet width, this leaves a minimum of 3/4" for each frame stile (left and right). Example: 30" wide cabinets, the largest cutout width allowable is 28 1/2".
- 3" rail above and below cutout.
- Number of shelves in the upper section of Tall Oven Cabinets will vary according to the opening size. This opening is determined by the oven cutout and height off the floor.
- Drawers will be equal height unless otherwise specified.
- Cutout back at oven opening.
- Toe base shipped loose for cabinets 90" tall and taller.
- See spec sheet for more details

TMOC

Tall Microwave Oven Cabinet

Standard 3" wide rails above and below cutout, specify if another dimension is required

**For figuring reveals for install kits, drw. Fronts overlay the oven rail by the following standard amounts:

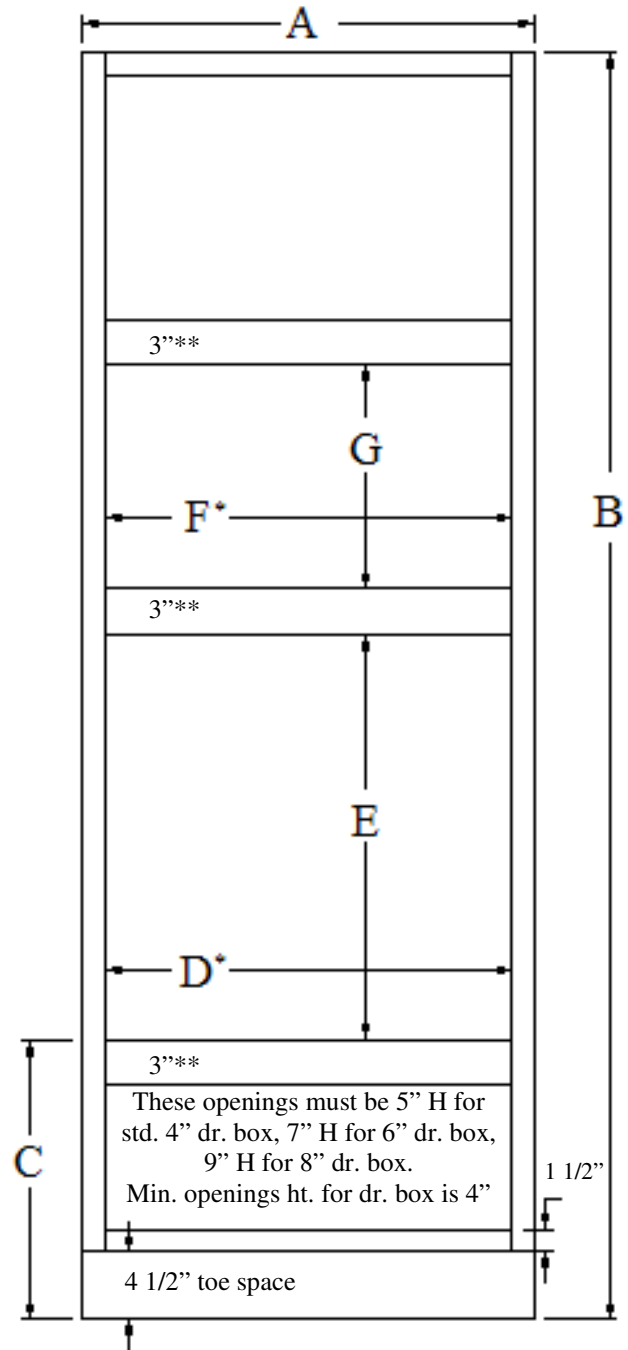
Hinge	Overlay
FOL-C	1 1/4"
SOL-C/SOL-K	3/8"
SOL-K LIPPED	5/16" ***
Specify if another dimension is desired ***	

***SOL-K Lipped overlays cannot be modified

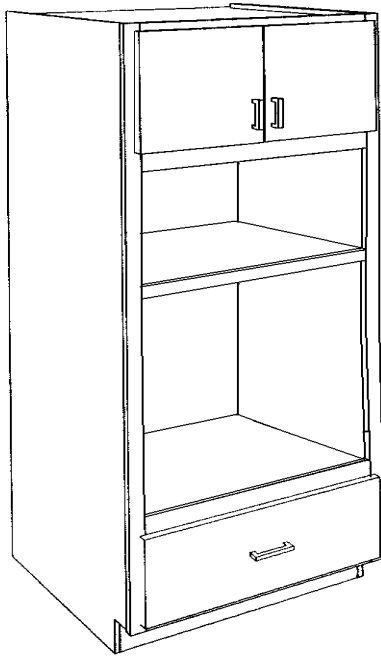
*Max cutout widths

Cabinet width	Max cutout width
24"	22 1/2"
27"	25 1/2"
30"	28 1/2"
33"	31 1/2"
36"	34 1/2"

Provide the following dimensions:
A= _____ Overall cabinet width
B= _____ Overall cabinet height
C= _____ Ht. cutout to start from floor (recommended ht. = 14")
D*= _____ Oven cutout width
E= _____ Oven cutout height
F*= _____ Microwave oven cutout width
G= _____ Microwave oven cutout height
*Cutout may be no wider than 1 1/2" less than overall cabinet width—see chart



TALL MICROWAVE OVEN CABINETS
1 DRAWER & 2 DOORS, 24" DEEP, TWO CUTOUTS



84" TALL

PRODUCT CODE	A-LINE	B-LINE
--------------	--------	--------

TMOC248424		
TMOC278424		
TMOC308424		
TMOC338424		
TMOC368424		

90" TALL

TMOC249024		
TMOC279024		
TMOC309024		
TMOC339024		
TMOC369024		

93" TALL

TMOC249324		
TMOC279324		
TMOC309324		
TMOC339324		
TMOC369324		

96" TALL

TMOC249624		
TMOC279624		
TMOC309624		
TMOC339624		
TMOC369624		

TALL MICROWAVE OVEN CABINETS

- Specify both cutout sizes (width X height) and distance from floor to bottom of lower cutout. To allow for a standard size drawer box at the bottom, the cutout must start at least 14" off of floor. A 3" rail will separate the cutouts unless otherwise specified.
- The cutout width can be no more than 1 1/2" less than the overall cabinet width, this leaves a minimum of 3/4" for each frame stile (left and right). Example: 30" wide cabinets, the largest cutout width allowable is 28 1/2".
- 3" rail above and below cutout.
- Number of shelves in the upper section of Tall Oven Cabinets will vary according to the opening size. This opening is determined by the oven cutout and height off the floor.
- Drawers will be equal height unless otherwise specified.
- Cutout back at oven opening only.
- Toe base shipped loose for cabinets 90" tall and taller.
- See spec sheet for more details

TWDOC

Tall Warming Drawer Oven Cabinet

Standard 3" wide rails above and below cutout,
specify if another dimension is required

**For figuring reveals for install kits,
draw. Fronts overlay the oven rail by the
following standard amounts:

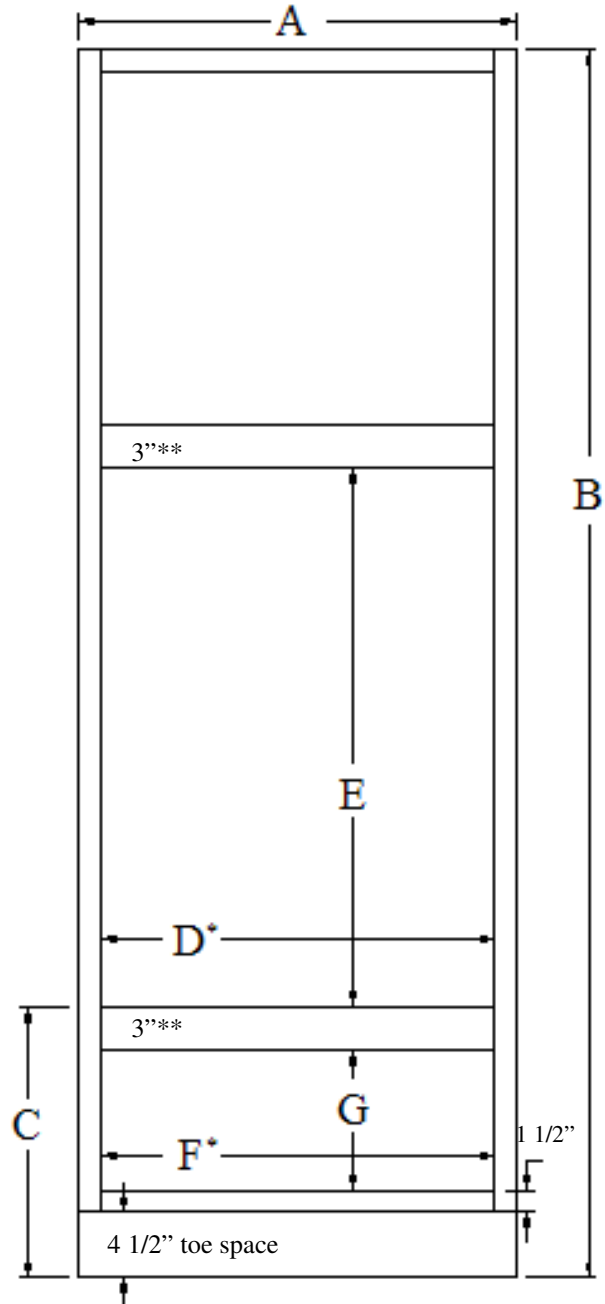
Hinge	Overlay
FOL-C	1 1/4"
SOL-C/SOL-K	3/8"
SOL-K LIPPED	5/16" ***
Specify if another dimension is desired ***	

***SOL-K Lipped overlays cannot
be modified

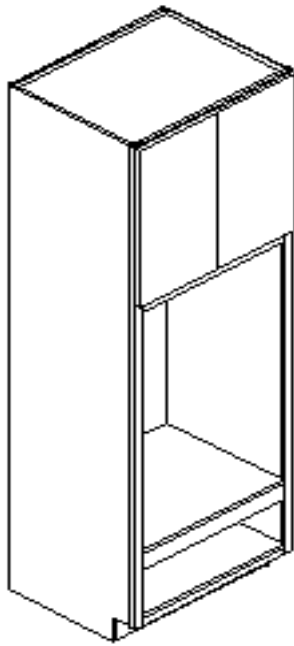
*Max cutout widths

Cabinet width	Max cutout width
24"	22 1/2"
27"	25 1/2"
30"	28 1/2"
33"	31 1/2"
36"	34 1/2"

Provide the following dimensions:
A= _____ Overall cabinet width
B= _____ Overall cabinet height
C= _____ Ht. cutout to start from floor (recommended ht. = 14")
D*= _____ Oven cutout width
E= _____ Oven cutout height
F*= _____ Warming drawer cutout width
G= _____ Warming drawer cutout height
*Cutout may be no wider than 1 1/2" less than overall cabinet width—see chart



TALL OVEN CABINETS WITH WARMING DRAWER, 24" DEEP



	PRODUCT CODE	A-LINE	B-LINE
84" TALL	TWDOC248424		
	TWDOC278424		
	TWDOC308424		
	TWDOC338424		
	TWDOC368424		
90" TALL	TWDOC249024		
	TWDOC279024		
	TWDOC309024		
	TWDOC339024		
	TWDOC369024		
93" TALL	TWDOC249324		
	TWDOC279324		
	TWDOC309324		
	TWDOC339324		
	TWDOC369324		
96" TALL	TWDOC249624		
	TWDOC279624		
	TWDOC309624		
	TWDOC339624		
	TWDOC369624		

TALL OVEN CABINETS WITH WARMING DRAWER

- Specify both cutout sizes (width X height) and distance from floor to bottom of lower cutout. Standard placement is 6" off of floor. A 3" rail will separate the cutouts unless otherwise specified.
- The cutout width can be no more than 1 1/2" less than the overall cabinet width, this leaves a minimum of 3/4" for each frame stile (left and right). Example: 30" wide cabinets, the largest cutout width allowable is 28 1/2".
- 3" rail above and below oven cutout.
- Number of shelves in the upper section of Tall Oven Cabinets will vary according to the opening size. This opening is determined by the oven cutout and height off the floor.
- Cutout back at oven opening only.
- Toe base shipped loose for cabinets 90" tall and taller.
- See spec sheet for more details

TALL FILLERS



TALL FILLER

- 3/4" Solid wood frame.
- Standard widths of 3" and 6".

PRODUCT CODE	LIST
--------------	------

TF 384	
--------	--

TF 390	
--------	--

TF 393	
--------	--

TF 396	
--------	--

TF 684	
--------	--

TF 690	
--------	--

TF 693	
--------	--

TF 696	
--------	--



TALL OVERLAY FILLER STRIP

2 3/4" WIDE

TOFS 384	
----------	--

TOFS 390	
----------	--

TOFS 393	
----------	--

TOFS 396	
----------	--

5 3/4" WIDE

TOFS 684	
----------	--

TOFS 690	
----------	--

TOFS 693	
----------	--

TOFS 696	
----------	--

- Overlay only, does not include filler.
- Standard has all 4 edges profile to match door edge.
- Length will match height of door/drawer overlay.
- Added to list price when attached in the Factory.
- When adding flutes to standard 2 3/4 wide overlay—2 flutes are standard



TALL ANGLED FILLER WITH RETURN

- 3/4" plywood return
- 45 degree angle
- Occupies 3" of cabinet run
- Specify left [L] or right [R] end of cabinet run. (left shown)
- Overall depth is 24", return depth is 21"
- Finished side is standard on return
- Add modification charge for flush finished end.

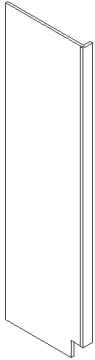
TAFR 384	
----------	--

TAFR 390	
----------	--

TAFR 393	
----------	--

TAFR 396	
----------	--

TALL FILLER WITH RETURN



TALL FILLER WITH RETURN

- 3" wide or 6" wide solid wood face frame with 3/4" plywood return.
- Specify L or R side for return. (left shown)
- Finished side is standard on return.
- Add modification charge for flush finished end.

3" WIDE

6" WIDE

PRODUCT CODE	LIST
--------------	------

TFR384	
--------	--

TFR390	
--------	--

TFR393	
--------	--

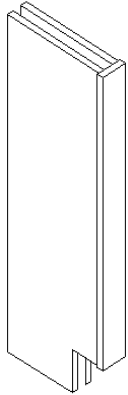
TFR396	
--------	--

TFR684	
--------	--

TFR690	
--------	--

TFR693	
--------	--

TFR696	
--------	--



TALL FILLER WITH RETURN BOTH

- 3" wide or 6" wide solid wood face frame with 2-3/4" plywood returns.
- Finished ends on both returns are standard.
- Add modification charge for flush finished ends.

3" WIDE

6" WIDE

TFRB384	
---------	--

TFRB390	
---------	--

TFRB393	
---------	--

TFRB396	
---------	--

TFRB684	
---------	--

TFRB690	
---------	--

TFRB693	
---------	--

TFRB696	
---------	--



BLANK

REFRIGERATOR LEGS



12" WIDE

PRODUCT LIST
CODE

ARL 1284

ARL 1290

ARLS 1293

ARL 1296

24" WIDE

ARL 2484

ARL 2490

ARL 2493

ARL 2496

REFRIGERATOR LEGS

- 1 1/2" Front frame with 3/4" plywood return.
- Specify width of face frame stock at no extra charge. (Not to exceed 3")
- Finish end standard.
- Add modification charge for flush finished ends

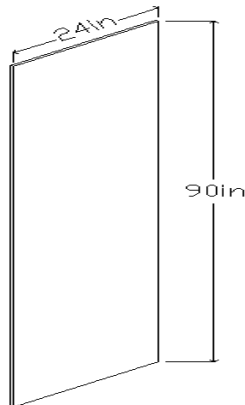
30" WIDE

ARL 3084

ARL 3090

ARL 3093

ARL 3096



12" WIDE

ARLS 1284

ARLS 1290

ARLS1293

ARLS 1296

ARLS12102

ARLS12108

24" WIDE

ARLS 2484

ARLS 2490

ARLS 2493

ARLS 2496

ARLS24102

ARLS24108

REFRIGERATOR LEGS (STRAIGHT)

- 3/4" Plywood finished both sides
- Edge-banding on (1) long side.

30" WIDE

ARLS 3084

ARLS 3090

ARLS3093

ARLS 3096

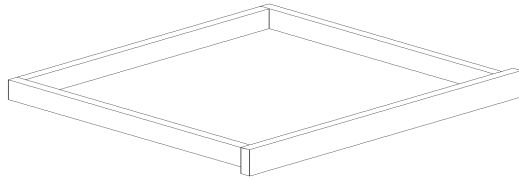
ARLS30102

ARLS30108

TALL ACCESSORIES

PRODUCT CODE	LIST
--------------	------

ROLLOUT SHELVES



2" HIGH (UP TO 24" WIDE)	AROS2402
2" HIGH (UP TO 42" WIDE)	AROS2502
4" HIGH (UP TO 24" WIDE)	AROS2404
4" HIGH (UP TO 42" WIDE)	AROS2504
7" HIGH (UP TO 24" WIDE)	AROS2407
7" HIGH (UP TO 42" WIDE)	AROS2507

- Rollout height designates actual height of decorative fronts, drawer box is approximately 1" less in height.
- Adjustable natural maple rollout shelves with epoxy coated drawer glides on wood pilasters. If the rollout and its components need to have the specie and finish match the interior of a cabinet with a MWI modification, a quote must be submitted prior to the order being placed for correct pricing and material availability.
- Blind dovetail construction
- Price per rollout shelf
- Adding rollouts to any cabinets will cancel all adjustable shelves in that section of the cabinet. Specify when needing adjustable shelves and rollouts in same section.

**Note when using combination of rollouts and adjustable shelves rollouts will always be located at bottom of section unless otherwise specified.

TALL SHELVES ON DOOR

ATSD

- Wood shelf rack with adjustable shelves mounted on cabinet door of lower section.

TALL TRAY DIVIDER

ATTD

- 1/2" birch laminated divider installed in upper section.
- Specify location and spacing of multiple dividers.
- Tray dividers will be equally spaced in the opening unless otherwise specified.
- Tray dividers are not removable.
- Adjustable shelves cannot be adjacent to tray dividers. A partition must be used if adjustable shelves are needed.

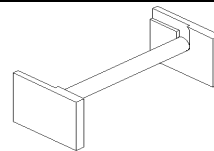
TALL END SKINS

ATSKIN

- 1/4" plywood panels matching specie and finish of order.

CLOSET ROD

- 1 1/4" Thick natural maple closet rod, removable.



ACR

TALL PARTITION

ATP

- 3/4" birch laminated plywood, located in lower opening.
- When specified for cabinets with shelves, shelves are installed on both sides.
- Use when adding an accessory on one side of cabinet, shelves are installed on opposite side.
- Partition will be centered unless otherwise specified.
- Specify location of partition and side of accessory installation if desired.

FLIPPER (POCKET) DOOR GLIDES

AFDG

Installed mechanism for stowing door inside cabinet as in entertainment cabinets. Minimum cabinet depth is 13 1/2" to allow for hardware.

ALFDG

- Add to cabinet price; priced per set of doors.
- Adding flipper doors to a cabinet will cancel all adjustable shelves in that section. When needing adjustable shelves, a loose shelf accessory will need to be added to cabinet price for each adjustable shelf.
- When needing finished interior, the matching wood interior modification will need to be added to cabinet price.
- When adding flipper doors to cabinet, interior opening width will be 8" less than the overall cabinet width if FOL-C. If SOL or Inset, the interior opening width will be 9 1/4" less than the overall cabinet width. Example: 30" wide, FOL-C cabinet will have an interior opening size of 22" wide.
- Doors larger than 26" wide or 72" tall require large flipper door glides (ALFDG).



Brighton Cabinetry Inc.
1095 Industrial Park Ave.
Neoga, IL 62447
Fax: (217) 895-3005
www.brightoncabinetry.com

Rollout Installation Guidelines

We have classified the addition of rollouts into two different categories based on usage. First, adding rollouts to wall cabinets or an upper portion of any cabinet, will be based on the same set of rules. (Upper portion is defined as any section of any cabinet which also has a lower opening.) Then, the addition of rollouts to base cabinets and the lower portion of tall cabinets will be based on another set of rules.

1. Rollouts in wall units and upper portions of tall or base units. (Sink base cabinets will follow this same set of rules.)
 - a. When adding **a single rollout**, the rollout will be permanently mounted to the floor in that section, utilizing our Blumotion full extension under-mount glides.
 - b. Also, when adding **a single rollout**, the quantity of adjustable shelves in that section will remain the same.
 - c. When adding **more than one rollout** to a section all adjustable shelves will be deleted. When adding adjustable shelves back into the opening, each shelf will be notched to accept the ladders which are installed for the rollouts.
 - d. Also, when adding **more than one rollout** to a section our standard rollout ladder configuration (ladders and sticks) will be utilized by installing the ladders full height in the interior of that section. (Full height is full usable height determined by Brighton.)
2. Rollouts in base units and lower openings of tall cabinets. (Except sink base cabinets.)
 - a. When adding **a single rollout** or **more than one rollout**, our standard rollout ladder configuration (ladders and sticks) will be utilized by installing the ladders in the complete interior height of that section.
 - b. Also when adding **a single rollout** or **more than one rollout**, all adjustable shelves will be deleted. When adding adjustable shelves back into the opening, each shelf will be notched to accept the ladders which are installed for the rollouts.

These simple rules have been adopted as a standard practice for Brighton Cabinetry, Inc. Any deviation from this process must be in writing in the notes section of the order. All cabinets in our catalog with rollouts included will also follow these standard guidelines.

BLUM SOFT CLOSE DOOR ATTACHMENT

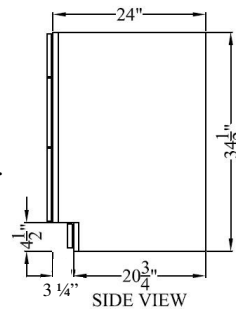
Soft close door attachment priced per door.
 Not available with inset or lipped doors.
 Not recommended for use on pie cut doors.
 Please specify FOL or SOL.

ASCDA-FOL

ASCDA-SOL

TOE KICK DRAWER - 24" DEEP

- Add to 24" deep cabinets.
- Operational, 2" high drawer box added into toe kick space.
- 3/4" thick solid wood face frame at bottom and sides.
- Toe notch for side of cabinet remains the same height and depth as standard after the 1/4" AMTK has been applied to adjacent cabinets.
- Actual front to back depth of drawer box is 18" for 24" deep unit.
- Drawer fronts are slab, 5 pc. not available.
- Minimum unit depth is 18".
- Illustration depicts B3D cabinet with ATKD accessory installed.



ATKD1824

ATKD2124

ATKD2424

ATKD2724

ATKD3024

ATKD3324

ATKD3624

APPLIED MOLDING CHARGE
MAMC

Charge to apply molding, ornaments, and appliqué to cabinets

ADD CENTER STILE
MACST

To add a vertical center stile to any cabinet.
Standard 1 1/2" wide stile, specify width of stile if different dimension is desired.

ADD CENTER RAIL
MACRT

To add a horizontal center rail to any cabinet.
Standard 1 1/2" wide rail, specify width of rail if different dimension is desired.
Include specific information for placement of rail, provide drawing if possible.
Charge includes cost for dividing doors into separate uppers and lowers.

TALL EXTEND STILE... UP TO 3"—SEE NEXT PAGE FOR ILLUSTRATIONS
MTES3

TALL EXTEND STILE...UP TO 6"—SEE NEXT PAGE FOR ILLUSTRATIONS
MTES6

Specify left (L) or right (R) stile extension.
Overlay filler strips are available for full-overlay flush look. (See base cabinet section).

INWARD EXTENDED STILE... UP TO 3"—SEE NEXT PAGE FOR ILLUSTRATIONS
MTIES3

INWARD EXTENDED STILE... UP TO 6"—SEE NEXT PAGE FOR ILLUSTRATIONS
MTIES6

Specify the length of the extension and left (L) or right (R) side.
Overall width of stile is 1 1/2" wider than specified extension.
Overlay filler strips are available for full-overlay flush look. (See base cabinet section).

EXTENDED TOP OR BOTTOM RAIL UP—SEE NEXT PAGE FOR ILLUSTRATIONS
METRU

Add to cabinet price.
Indicate overall dimensions.

MEBRU

EXTENDED TOP RAIL DOWN—SEE NEXT PAGE FOR ILLUSTRATIONS
METRD

Add to cabinet price.
Indicate overall dimensions.

VALANCE BOTTOM RAIL
MVBR

Specify shape: Classic Arch, Elegant Arch, Straight, Arched, or Furniture.
Provide a sketch or template for custom pattern, requires quote.
Standard width is 5". Price for cabinets up to 42" wide.
Base and tall cabinets with this bottom rail modification will still have the subtoe behind the valance bottom rail. The subtoe ships finished and will not require a separate AMTK.

VALANCE TOP RAIL
MVTR

Price for cabinets up to 42" wide.
Specify shape: Classic Arch, Elegant Arch, Straight, Arched, or Furniture.
Provide a sketch or template for custom pattern, requires quote.
This extends a standard 1 1/2" wide top rail down for an overall rail width of 5".

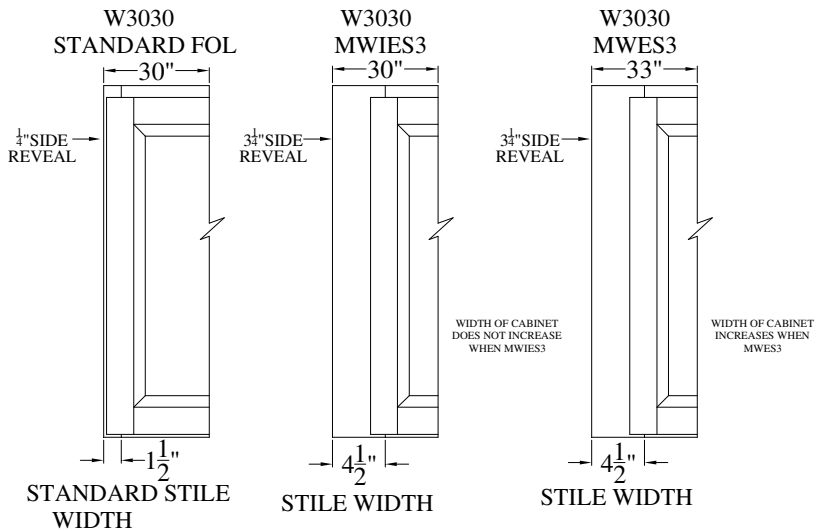
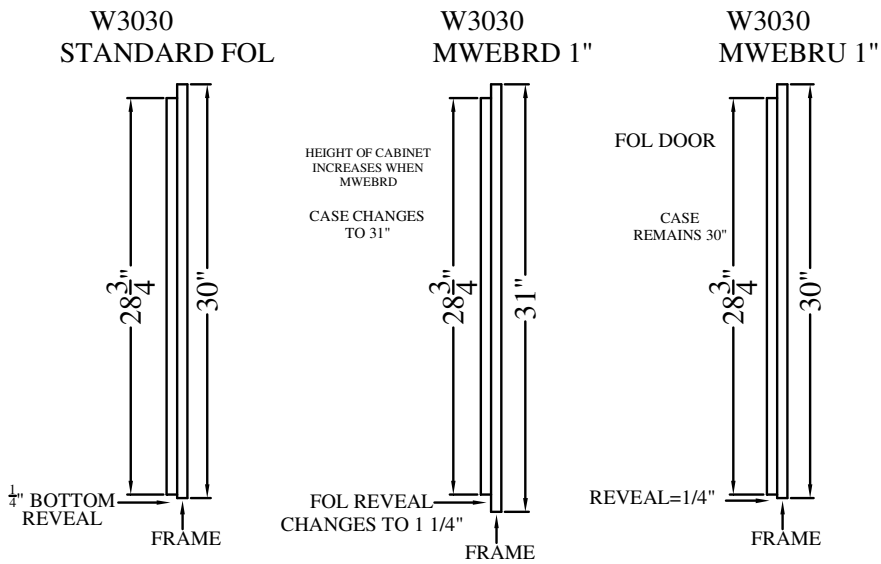
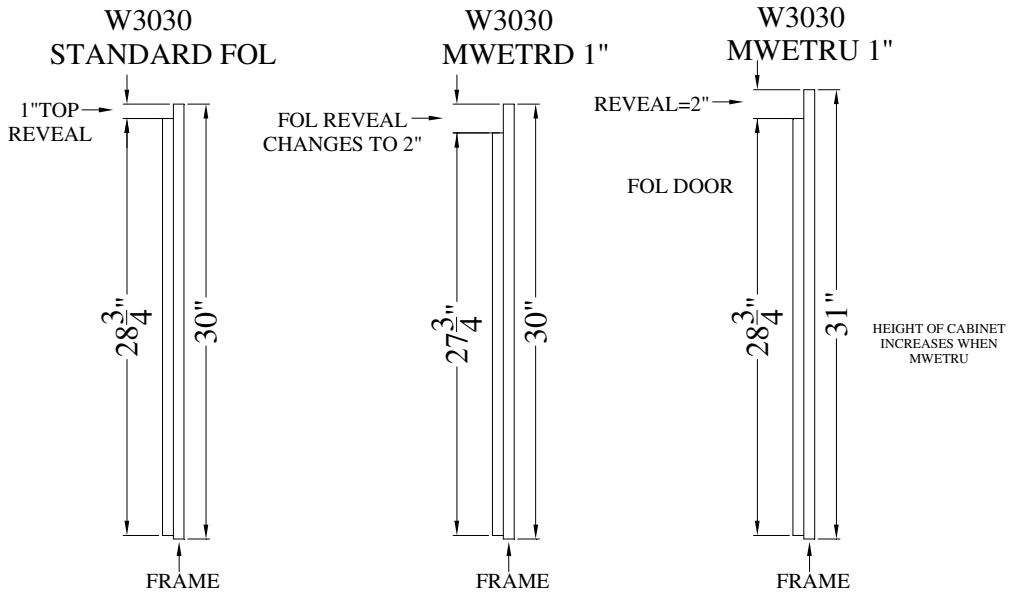
MATCHING WOOD INTERIOR
MMWI 1/2

Priced as % of list price ,added to cabinet price.
Wood specie and finish match exterior of cabinet.
The grain on interior backs may be horizontal on cabinets larger than 48" wide.

TALL FINISHED END
MTFE

Side of cabinet matches specie and stain of front frame and doors.
Side retains 1/4" scribe reveal same as unfinished.
Specify left (L) or right (R) end.
Note when installing when cabinets against the side of a tall cabinet, we recommend using the flush finished end modification to align with base cabinets.

EXTENDED RAIL AND STILE ILLUSTRATIONS





TALL MODIFICATIONS

	PRODUCT	LIST
TALL FLUSH FINISHED END A 1/4" plywood panel is applied creating a flush end. Side of cabinet matches specie and stain of front frame of doors. Specify left (L) or right (R) end.	MTFFE	
TALL FALSE DOOR ON END Specify left (L) or right (R) end. Price includes finished end. Reveal matches door unless specified otherwise.	MTFDE	
TALL WAINSCOT END PANEL 3/4" panel constructed with same material as cabinet doors. Standard center panel to match cabinet doors. Specify left (L) or right (R) end. The rail location separating the upper and lower panels will match that of the doors on front of cabinet unless specified otherwise. Will be flush with cabinet end. Not longer available on mitered door styles. Will be split into 2 panels top to bottom to align with the doors on the face of the cabinet. Will have a 6" bottom rail unless the cabinet has a side toe or loose toe. The top rail will be 1" larger than the door style.	MTWEP	
BEAD BOARD APPLIED Specify left (L) or right (R).	MBBA	
BEAD BOARD INTERIOR BACK Bead board installed in the back of cabinet.	MBDIB	
DECREASE CASE DIMENSION MODIFICATION Used to decrease height, and/or width, and/or depth between standard sizes and below the smallest standard sizes. Minimum overall width = 6", minimum overall depth = 4". Minimum overall depth of cabinets with drawers is 12". When cabinets with intermediate floor are decreased in height, the upper section is reduced. To decrease width of one or both legs of a corner cabinet, use only one modification charge. Choose larger cabinet and modify down to receive this charge.	MDCDIM	
INCREASE CASE DIMENSION MODIFICATION Used to increase height, and/or width, and/or depth above the largest standard sizes. Any cabinet increased in width to 39" or above will have a fixed center stile as standard. Choose the largest standard cabinet available and modify up to receive this charge.	MICDIM	
TALL ANGLED SIDE Side is angled: front frame is parallel to back. Specify left (L) or right (R) side. Include a sketch (top view) with dimension of side and front. Specify a degree of angle Use widest dimension of finished cabinet as base price, then add modification charge.	MTSA L/R	
TALL ANGLED ENTRY This modification is like side angled but with frame and working door. Specify left (L) or right (R) side. Include a sketch (top view) with dimension of side and front. Specify a degree of angle Indicate depth of right and left sides. Add to cabinet price using back dimension. Drawers are not available on the angled front side.	MTAE L/R	

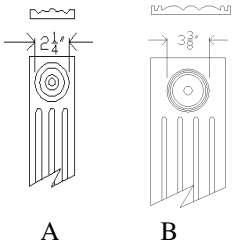


TALL MODIFICATIONS

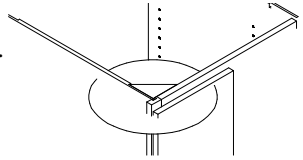
PRODUCT CODE	LIST
--------------	------

TALL ANGLED FRONT Front is angled, sides remain perpendicular to back. Include a sketch (top view) with dimension of side and front. Specify overall cabinet size. Indicate depth of right and left sides. Add to cabinet price using back dimension. Drawers are not available on the angled front side.	MTAF L/R
TALL END ENTRY Specify left [L] or right [R] end and door hinging Add to cabinet price	MTEE L/R
TALL DOUBLE ENTRY Add to cabinet price Specify hinging on rear of cabinet if different from front	MTDE
FINISHED BACKS 1/2" Price per square foot Back thickness does not affect overall depth of the cabinet Vertical grain is standard	MFBAH
TALL EXTEND SIDE BACK 48" overall maximum depth Price per 6" of extension Specify left [L] or right [R] side Specify the length of the extension beyond the standard depth	MTESB L/R
TALL FRONT ONLY With door (s) hinged and working. Specify if fixed door (s) is required. Floor not included. Unless specified, front will be shipped without sub toe kick. Overall frame height will be 4 1/2" less product height ordered unless MFTK (flush toe) is added. Example: TUC1884R (std. 84" high overall) + MTFRO ordered, shipped frame height = 79 1/2".	MTFRO
TALL FRAME CHANGE Includes one or all changes made to frame. (excluding extended stiles and rails) Specify changes and dimensions; provide sketch	MFC
TALL DUCT CUT-OUT Standard cutout is 5" deep and 11" wide Specify custom cutout Provide top view with cutout dimensions and location	MTDCO
TALL CLIPPED CORNER Specify left [L] or right [R] corner Stile is angled at 45 degrees. This modification does not increase the width of the cabinet The face frame is decreased by 3" per clipped corner	MTCC L/R
OMIT DOORS Interior remains standard finish unless matching wood interior modification is used.	MOD

TALL MODIFICATIONS

	PRODUCT CODE	LIST
<p>ROSETTE DESIGN</p> <p>Routed into filler. Usually accompanies fluting. Style A, 2 1/4" is for 3" filler or 2 3/4" overlay filler with Machine or L149 edge. Minimum overlay filler width will be 3 1/8" for all other edge profiles.</p> <p>Style B, 3 3/8" is for 6" filler</p>		<p>MROSETTE</p>
<p>TALL FLUTING</p> <p>Three flutes are standard—based on 3" filler Routed on filler or stile up to 6" wide Specify the number of flutes (1 flute per inch is recommended) Standard is 3/8" flute with 3/8" space between flutes Limits will align with upper and lower rails Minimum filler width is 1 1/2".</p>		<p>MTFLUTE</p>
<p>SCOOPED DRAWER SIDES</p> <p>Standard scoop is 1 3/4" unless otherwise specified Minimum drawer side height is 2"</p>		<p>MSDS</p>
<p>TALL ADDITIONAL DRAWER, STANDARD</p> <p>For standard 5" opening or less Blumotion glides standard: other glide styles will be substituted when the frame opening for the drawer boxes are under 6" wide or cabinet is less than 15" deep. This price includes drawer box, hardware, drawer front and frame change</p>		<p>MTADS</p> <p>SLAB</p> <p>5-PIECE</p>
<p>TALL ADDITIONAL DRAWER, DEEP</p> <p>For opening greater than the standard 5". Blumotion glides standard: other glide styles will be substituted when the frame opening for the drawer boxes are under 6" wide or cabinet is less than 15" deep. This price includes drawer box, hardware, drawer front and frame change</p>		<p>MTADD</p> <p>SLAB</p> <p>5-PIECE</p>
<p>5-PIECE DRAWER HEAD UPGRADE</p> <p>Price per drawer head. The top and bottom rails of the drawer head are cut down.</p>		<p>5-PDWHD-FOL</p> <p>5-PDWHD-SOL/INSET</p>
<p>FLUSH TOE KICK</p> <p>Per cabinet front When adding this to base or tall cabinets and also requesting that the flush toe is cut into a valance shape, there is no sub toe under the cabinet.</p>		<p>MFTK</p>
<p>LOOSE TOE KICK</p> <p>Shipped loose. Overall height is reduced 4 1/2"</p>		<p>MLSTK</p>
<p>SIDE TOE KICK</p> <p>Add to cabinet price Specify left or right or left and right</p>	<p>(Left)</p> <p>(Right)</p> <p>(Left and Right)</p>	<p>MLTK</p> <p>MRTK MLRTK</p>
<p>BACK TOE KICK</p> <p>Add to cabinet price Specify back or combination of back and side(s)</p>	<p>(Back)</p> <p>(Back and Left)</p> <p>(Back and Right)</p> <p>(Back, Left and Right)</p>	<p>MBTK</p> <p>MBLTK</p> <p>MBRTK</p> <p>MBLRTK</p>

TALL MODIFICATIONS

	PRODUCT CODE	SPECIFY	LIST
<p>RECESSED SIDE</p> <p>Normally used when a recess allowance is needed for a field applied panel. The cabinet face frame and door reveals will not change with this modification. Most standard cabinets already have 1/4" recess behind the face frame, specify <u>TOTAL</u> amount needed. Maximum overall recess allowed = 7/8".</p>	MTRS	L/R	
			
<p>GROOVED PANEL LEFT / RIGHT</p> <p>1/4" veneered panel with MDF core applied, creating a flush end. 1/8" wide, vertical 'V' grooves, space 1 1/2" apart. Other designs to match grooved doors are available upon request. Matches specie and stain of front frame and doors. Not available in Rustic Alder.</p>	MTGP	L/R	
<p>GROOVED PANEL INTERIOR BACK</p> <p>1/4" veneered panel with MDF core installed in the back of the cabinet. 1/8" wide, vertical 'V' grooves, spaced 1 1/2" apart. Other designs to match grooved doors are available upon request. Matches specie and stain of front frame and doors. Use with MWI modification to finish the remainder of cabinet interior. Not available in Rustic Alder.</p>	MTGPIB		
<p>GROOVED PANEL BACK (1/2")</p> <p>1/2" veneered panel with MDF core applied to the case back. 1/8" wide, vertical 'V' grooves, spaced 1 1/2" apart. Other designs to match grooved doors are available upon request. Matches specie and stain of front frame and doors. Back thickness does not affect overall depth of cabinet. Not available in Rustic Alder.</p>	MTGPBAH		