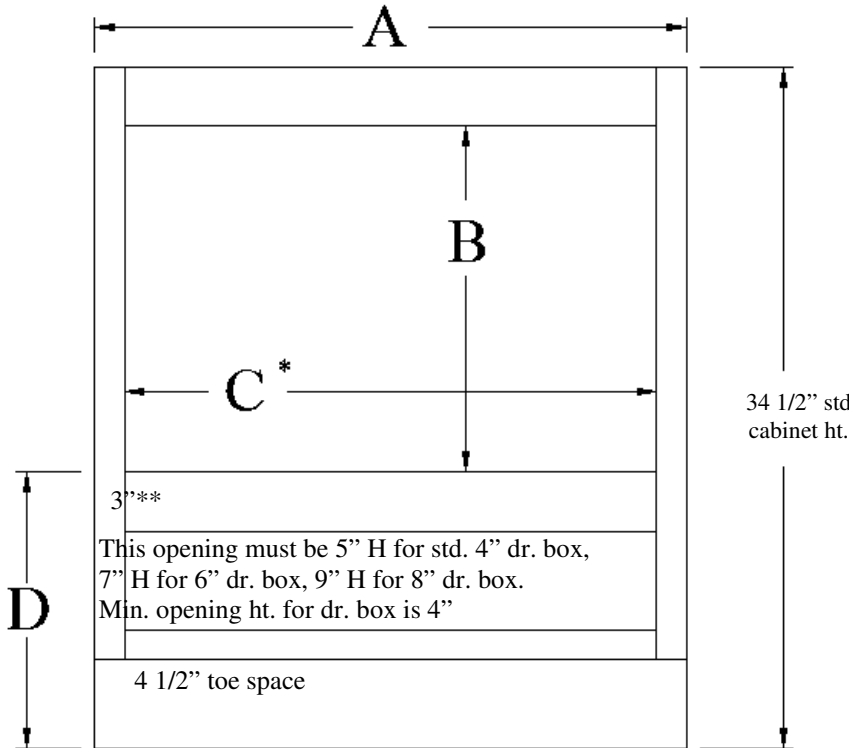


BMOG

Base Microwave Oven Cabinet

**Minimum Top Rail width of 5/8"
**3" wide standard center rail



**For figuring reveals for install kits, Drawer Fronts overlay the oven rail by the following standard amounts:

Hinge	Overlay
FOL-C	1 1/4"
SOL-C/SOL-K	3/8"
SOL-K Lipped	5/16"
Specify if another dimension is desired***	

***SOL-K Lipped overlays cannot be modified

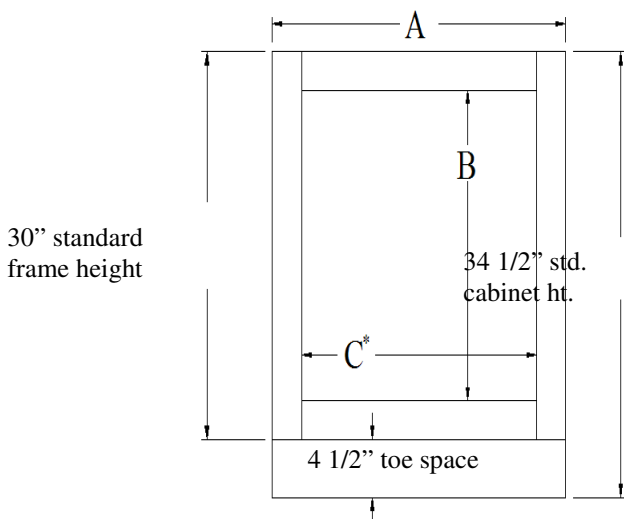
*Max cutout widths

Cabinet width	Max cutout width
24"	22 1/2"
27"	25 1/2"
30"	28 1/2"
33"	31 1/2"
36"	34 1/2"

34 1/2" std. cabinet ht.

BOG

Base Oven Cabinet



Provide the following dimensions:

A=_____ Overall cabinet width

B=_____ Oven cutout height

C*=_____ Oven cutout width

D=_____ Ht. cutout to start from floor (recommended min. ht. = 14")

*Cutout may be no wider than 1 1/2" less than overall cabinet width—see chart

- Minimum Top Rail width of 5/8
- Maximum standard overall oven cutout height of 27 7/8" for BOG
- Minimum height oven cutout to start from floor is 5 1/4" for BOG
- Oven cutout is centered when 27" high or less for BOG unless otherwise specified.
- MFC charges applies, if cabinet floor is lower than standard location, with 4 1/2" high toe space and 1 1/2" bottom face frame rail.